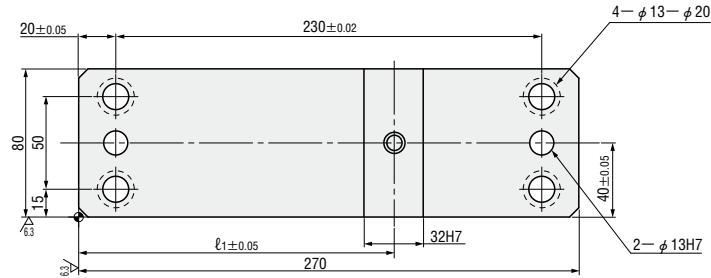


# STANDARD FLYING CAM UNITS FOR PIERCE

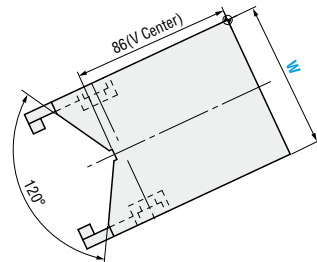
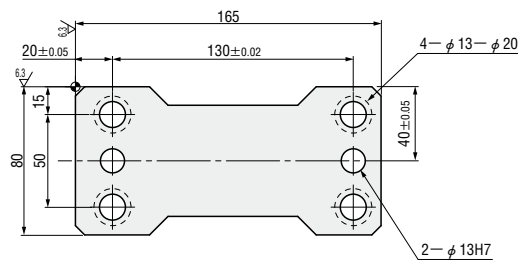
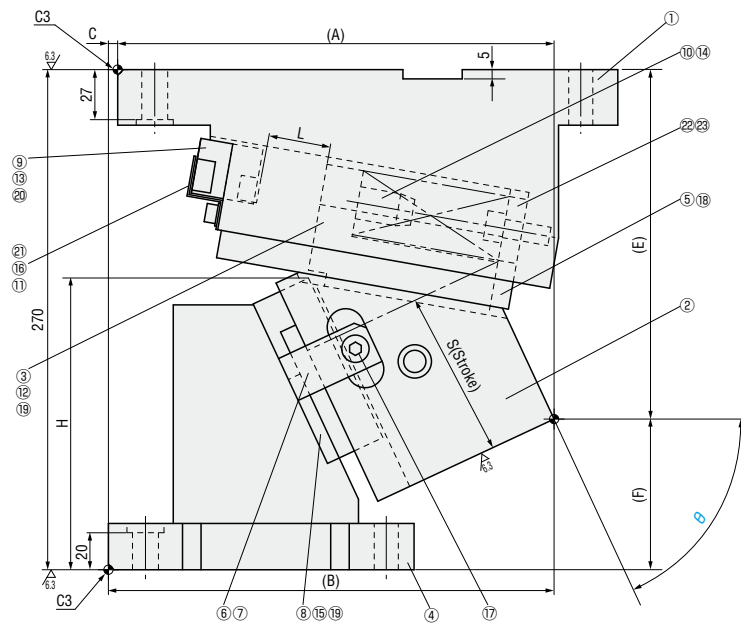
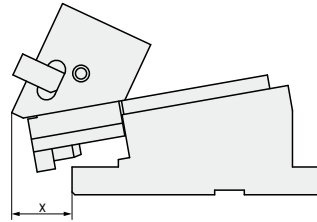
—MGFV · MEVN—



— With automatic alignment — **MGFV80 ( $\theta=65-70$ )**  
 — Without automatic alignment — **MEVN80 ( $\theta=65-70$ )**  
 (Economy type)



■ Rear removal space



W	$\theta$	A	B	C	E	F	H	L	$\ell_1$	x
80	65	235.61	240.61	5	188.65	81.35	157.4	35	170	74
	70	227.83	237.83	10	195.53	74.47	157.1	30		75

Slide Stroke S	Working force KN (tonf)		Spring load N (kgf)			Total weight kg	Catalog No.	W	$\theta$
	Standard working force	Max. working force	Preload	5mm before bottom dead center	Max. load				
81.6	39.2 (4.0)	78.5 (8.0)	323 (32.9)	1386 (141.3)	1454 (148.2)	23.7	—With automatic alignment— <b>MGFV</b>	80	65
86.4			404 (41.2)	1547 (157.8)	1616 (164.8)				70

Order

Days to Ship **Quotation**

Price **Quotation**

Alterations        (N12 · N16...etc.)

Alterations	Code	Spec.
$\phi 12H7$ or $\phi 16H7$	N12	Change dowel hole diameter $\phi 13H7 \Rightarrow \phi 12H7$
	N16	Change dowel hole diameter $\phi 13H7 \Rightarrow \phi 16H7$
	K	Add locating key (With 1 hexagon socket head cap screws M8×15)
	SC	Move forward mounting surface $0 \leq SC \leq 60$ 1mm increment
	WC	Change the width of mounting surface $W=80 \Rightarrow W=100$ or $120$ Only 100 or 120 can be specified.

■ Components table P.1179