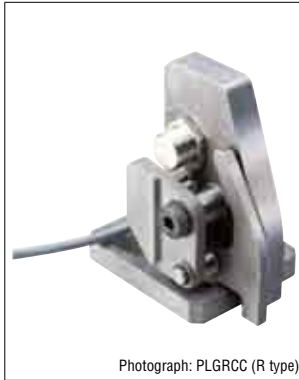


PANEL INPUT DETECTORS

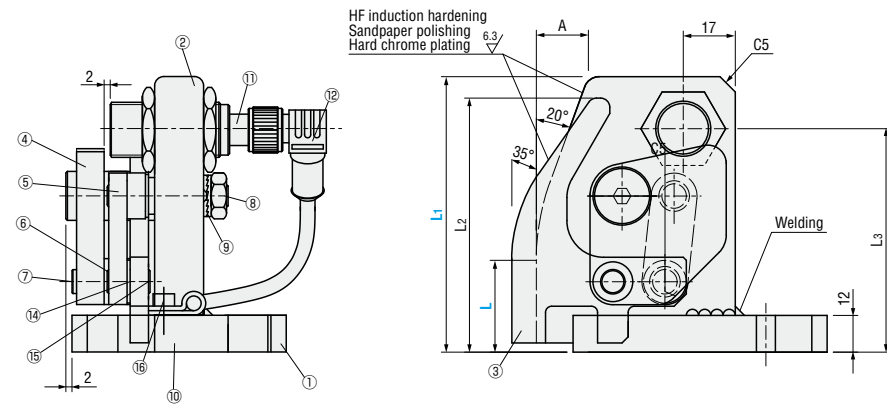
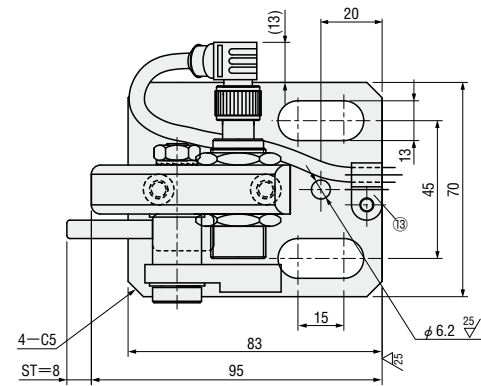
— COMPACT TYPE —



Photograph: PLGRCC (R type)

Figure: PLGLCC(L type)

PLGLCC (L type)
PLGRCC (R type)



Components

No.	Name	Quantity	Remarks
①	Body of gauge (Base)	1	Equivalent to SS400
②	Body of gauge (Main support)	1	S45C (HF induction hardening)
③	Detection lever	1	S45C (HF induction hardening)
④	Detection plate	1	Equivalent to SS400
⑤	Link plate	1	Equivalent to SS400
⑥	Indication pin	1	Equivalent to SUJ2 HRC50~
⑦	Operating pin	1	Equivalent to SUJ2 HRC50~
⑧	Nut	1	KNTR8
⑨	Nord-Lock	2	NLDP-8
⑩	Hexagon socket head cap bolt	2	CB6-15
⑪	Proximity sensor	1	IG0402 (Product of EFECTOR)
⑫	Sensor cable	1	WWAKW4T-5 (Product of TURCK)
⑬	Cable clamp	1	UC-0.5
⑭	Oil-free bushing	1	LFZF8-6
⑮	Operating pin	1	Equivalent to SUJ2 HRC50~
⑯	Hexagon socket head cap bolt	1	CB4-10

Catalog No.	L	L1	L2	L3	A
L type PLGLCC	30	90 110	83	73	17 24.3
R type PLGRCC	50	110 130	103	75	17 24.3



Order

Catalog No. - L - L1
PLGLCC - 30 - 90



Days to Ship

Quotation



Alterations

Catalog No. - L - L1 - (CLC · SCN)
PLGLCC - 30 - 90 - CLC



Price

Quotation

Alterations	Code	Spec.
Cable length change	CLC	Cable length is changed from 5m to 10m.
Without sensor Without sensor cable	SCN	Proximity sensor and sensor cable are not provided.

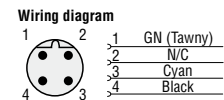
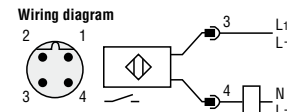
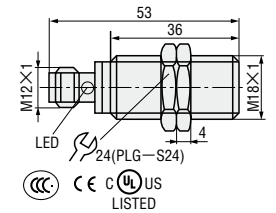
Features

- 1) It adopts the method which only detects the panel, and lower cost is achieved by cancelling stopper units.
- 2) Horizontal movement of detection lever: Unlike conventional rocking detection levers, the lever is unaffected by variations in the panel position and provides stable detection.
- 3) It is space-saving for its small size with height of 90mm.
- 4) Proximity sensor
 - The connector-type proximity sensor can be installed and removed easily, facilitating maintenance.
 - Use corresponding AC/DC sensor (20V~140V)
 - Baseplate mounting: Because the relief distance for the upper die can be reduced, the strength loss of the upper die is reduced.

Specifications of proximity sensor and cable

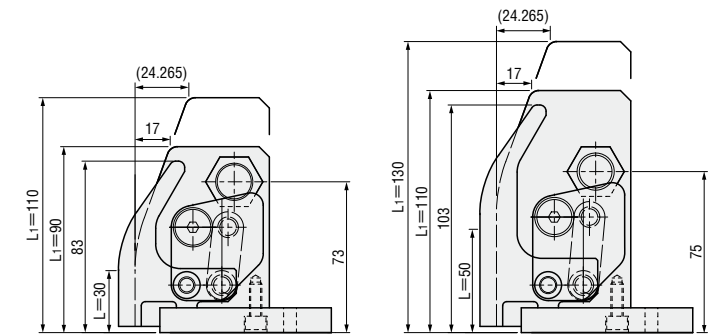
Proximity sensor: (EFECTOR)
Model: IG0402
Power supply: AC/DC 20~140
Ambient temperature: -25~+70°C

Sensor cable: (Made by TURCK)
Model: WWAKW4T-5



*Cable size and color are subject to change without any prior notice.

Shape and size of panel input detector



Example

