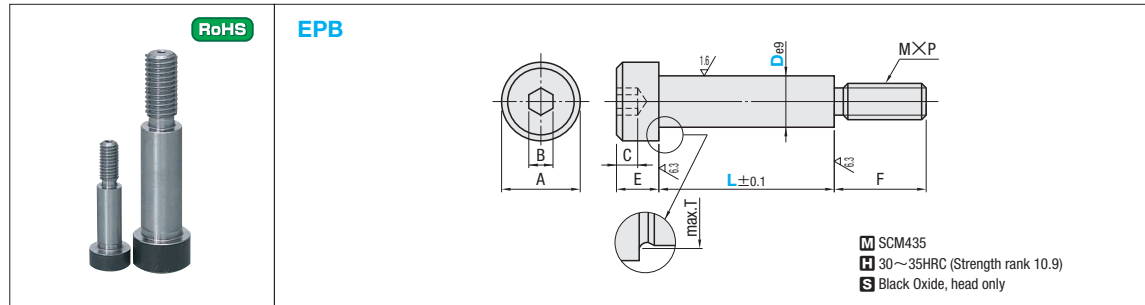


BOLTS FOR EJECTOR PLATE SET

⚠ Non JIS material definition is listed on P.1351 - 1352



De9		A	B	C	E	F	M×P	T
10	-0.025 -0.061	16	6	4	8	16	M 8×1.25	10.8
13	-0.032 -0.075	18	8	5	10	20	M10×1.5	14
16	-0.040 -0.092	24	10	7	14	24	M12×1.75	17
20		27	14	9	18	32	M16×2.0	21
25		33	17	11	19	40	M20×2.5	26

Part Number	Type	D	L	U/Price	
				1~19	20~29
EPB	10	31 36 41 46 51 56 61			
	13	31 36 41 46 51 56 61 66 71			
	16	51 56 61 66 71 76 81 91 101 111 121 131			Quotation
	20	61 66 71 76 81 91 101 111 121 131 141			
	25	121 131 141 151 161			

⚠ No knurling on the head.

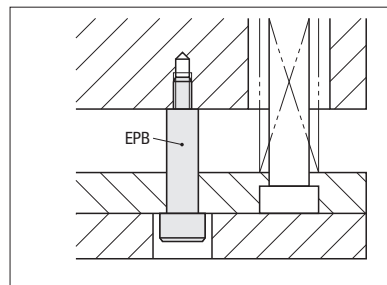
⚠ To be quoted on price & lead time above Max. Q'ty.

Order **Part Number** — **L**
EPB10 — 51

Days to Ship **Quotation**

Example

- Use when pushing up and fixing the ejector plate such as when setting or replacing the ejector pin.
- Because the L dimension is an integral number of 5mm units + 1mm according to the space which is incremented in 5-mm steps, the mold can be installed in the molding machine without any need to counterbore the upper side of the ejector plate.
- Because the threaded part (F dimension) is somewhat long, it is possible to easily set the ejector plate without subjecting it to the load from the spring.



■ F dimension comparison table

D	M×P	F	
		EPB	Shoulder bolts MSB · MSBL (P.1191~1192)
10	M 8×1.25	16	12
13	M10×1.5	20	16
16	M12×1.75	24	18
20	M16×2.0	32	24
25	M20×2.5	40	30



Components
of
Ejector Space