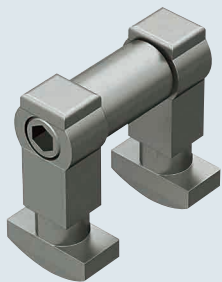


Blind Joint Components

Post-Assembly Insertion Double Joint Kits

Blind Joint Components –
Post-Assembly Insertion
Double Joint Kits

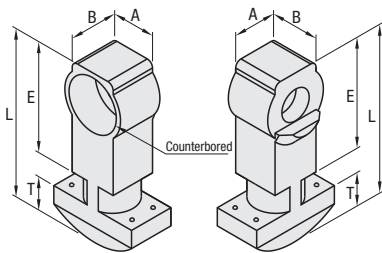


RoHS10

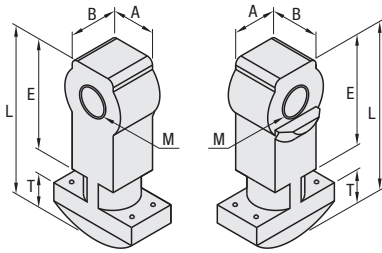
Part Name		Material
Post-Assembly Insertion Double Joint (A, B)		CF-8 Stainless Steel Cast
Joint Pipe	No. 5-20, 6-30, 8-40, 8-45	304 Stainless Steel (Sintering)
	No. 5-40, 6-60, 8-80, 8-90	304 Stainless Steel
Hex Socket Head Cap Screw		304 Stainless Steel

HPJN Post-Assembly Insertion Double Joint

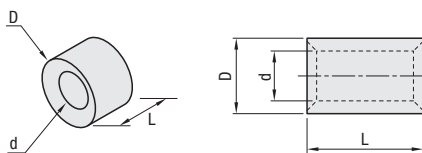
(1) Post-Assembly Insertion Double Joint A



(2) Post-Assembly Insertion Double Joint B



(3) Joint Pipe



HPJN is a modified replacement product for discontinued product type HPJ.

The tapered part of a Joint Pipe and the tab of a post-assembly joint create upward lifting force, and this force joints the extrusions together.

Part Number		Accessories							
Type	No.	(1) Post-Assembly Insertion Double Joint A	Quantity	(2) Post-Assembly Insertion Double Joint B	Quantity	(3) Joint Pipe	Quantity	(4) Hex Socket Head Cap Screw	Quantity
HPJN	5-20	Post-Assembly Insertion Double Joint A5	1	Post-Assembly Insertion Double Joint B5	1	Joint Pipe 5-20	1	M3x15	1
	5-40					Joint Pipe 5-40		M3x35	
	6-30	Post-Assembly Insertion Double Joint A6		Post-Assembly Insertion Double Joint B6		Joint Pipe 6-30		M5x22	
	6-60					Joint Pipe 6-60		M5x50	
	8-40	Post-Assembly Insertion Double Joint A8		Post-Assembly Insertion Double Joint B8		Joint Pipe 8-40		M6x30	
	8-80					Joint Pipe 8-80		M6x70	
	8-45	Post-Assembly Insertion Double Joint A8-45		Post-Assembly Insertion Double Joint B8-45		Joint Pipe 8-45		M6x35	
	8-90					Joint Pipe 8-90		M6x80	

(1) Post-Assembly Insertion Double Joint A

Part Name	A	B	L	T	E	Counterbored
Post-Assembly Insertion Double Joint A5	5.8	5.2	19.5	3.3	12.7	For M3
Post-Assembly Insertion Double Joint A6	7.8	7.5	28.6	6	18.6	For M5
Post-Assembly Insertion Double Joint A8	9.8	10	39	6.5	24.5	For M6
Post-Assembly Insertion Double Joint A8-45			39.5	6.5	25	

(2) Post-Assembly Insertion Double Joint B

Part Name	A	B	L	T	E	M
Post-Assembly Insertion Double Joint B5	5.8	5.2	19.5	3.3	12.7	3
Post-Assembly Insertion Double Joint B6	7.8	7.5	28.6	6	18.6	5
Post-Assembly Insertion Double Joint B8	9.8	10	39	6.5	24.5	6
Post-Assembly Insertion Double Joint B8-45			39.5	6.5	25	

(3) Joint Pipe

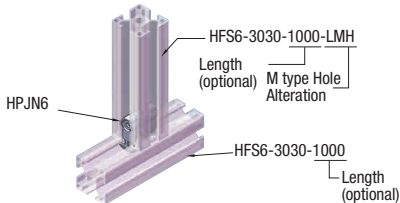
Part Name	L	D	d
Joint Pipe 5-20	8	7	4.7
Joint Pipe 5-40	28		
Joint Pipe 6-30	12	11	7
Joint Pipe 6-60	42		
Joint Pipe 8-40	15	13	8
Joint Pipe 8-80	55		
Joint Pipe 8-45	19		
Joint Pipe 8-90	64		

Post Assembly Insertion Double Joint Kits	Applicable Extrusion No.	[Exception] Extrusion Not Available
HPJN5-20	5-2020	—
HPJN5-40	5-2040 5-4040	—
HPJN6-30	6-3030	—
HPJN6-60	6-3060 6-6060	—
HPJN8-40	8-4040	—
HPJN8-80	8-4080 8-8080	—
HPJN8-45	8-4545*	*HFSL8-4545, HFSLF8-4545 and HFSLT8-4545 cannot be used because the thickness of slot extrusion is different.
HPJN8-90	8-4590* 8-9090	*HFSLT8-4590 cannot be used because the thickness of slot extrusion is different.



Application Example

Installation Example



Part Number Example

Part Number
HPJN6-30

Blind Joint Components

Post-Assembly Insertion Double Joint Kits, *continued*

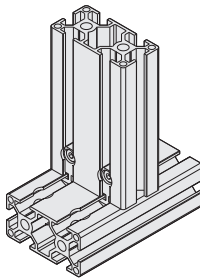


Application Example

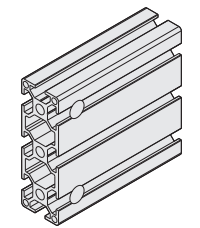
Post-Assembly Insertion Double Joint Connection (Connect the extrusion at the corners or the center.)

Step	Front View	Side view	Post-Assembly Insertion Double Joints	Specification Method by Part Number (30 Square as an Example)
1				(1) HFS6-3030-1000-LMH (2) HFS6-3030-1000 (A) Post-Assembly Insertion Double Joint A (B) Post-Assembly Insertion Double Joint B (C) Joint Pipe
2				
3				 When tightening the Hex Socket Head Cap Screw, pulling force works as illustrated above, and connects two extrusions.
4				
5				
6				

Example of Rectangle Shape Extrusion



For extrusions with three rows of slots, M holes cannot be drilled on the center one. (For explanation of M hole, refer to P2873)



ex.) HFS6-3090-1000-LMH