

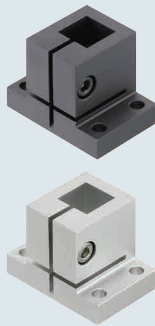
# Brackets for Stands

## Square Hole / Standard Type / Side Mounting Hole

**Features:** Square posts will not rotate in square brackets. Useful for holding sensors or cameras locked from rotation.

**Accessories:** For posts for Slides used in sets, refer to **P.2233**

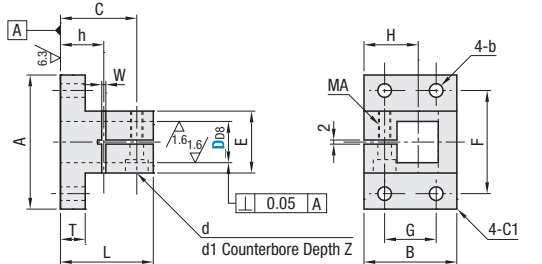
### Brackets for Stands – Square Hole Standard Type



RoHS10

Type	Material	Surface Treatment	Accessories
CLQB	1018 Carbon Steel or Equivalent	Black Oxide	Hex Socket Head Cap Screws
CLQNM		Electroless Nickel Plating	Hex Socket Head Cap Screws (Stainless Steel Equivalent)
CLQBM	Aluminum Alloy	Black Anodize	Hex Socket Head Cap Screws
CLQAM		Clear Anodize	Hex Socket Head Cap Screws (Stainless Steel)
CLQS	304 Stainless Steel	—	Hex Socket Head Cap Screws (Stainless Steel)

**Accessories:** CB screws (**P.2378**) are included with black oxide/black anodized products, and SCB screws (**P.2379**) are included with the other products, respectively.

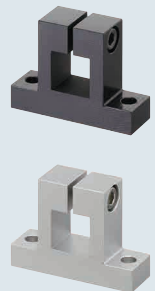


Part Number		D <sub>08</sub>	A	B	L	T	E	F	G	b	C	H	d	d <sub>1</sub>	Z	MA	h
Type																	
CLQB CLQNM CLQBM CLQAM CLQS	10	+0.077	38	24	24	7	20	30	14	4.5	17.5	15	4.5	8	4.5	M4	10
	12	+0.050										16					
	15		48	32	36	9	26	38	20		24	19					12
	20	+0.098	52	36	40	10	30	42	24	5.5	26.5	21	5.5	9.5	5.5	M5	13
	25	+0.065	62	45	48	12	35	48	28	6.5	32	28	6.5	11	6.5	M6	15

The tolerance and perpendicularity of D<sub>08</sub> is before slitting.

Recommended Tolerances of Fitting Shafts: 0—0.12. For stand posts, see **P.2230—2231**. Tightening with a long wrench is recommended.

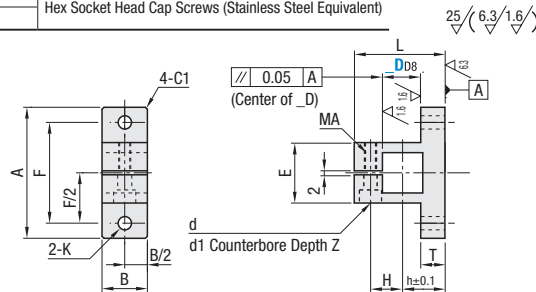
### Brackets for Stands – Side Mounting Hole Type



RoHS10

Type	Material	Surface Treatment	Accessories
CLTQB	1018 Carbon Steel or Equivalent	Black Oxide	Hex Socket Head Cap Screws
CLTONM		Electroless Nickel Plating	Hex Socket Head Cap Screws (Stainless Steel Equivalent)
CLTQBM	Aluminum Alloy	Black Anodize	Hex Socket Head Cap Screws
CLTQAM		Clear Anodize	Hex Socket Head Cap Screws (Stainless Steel Equivalent)
CLTQS	304 Stainless Steel	—	Hex Socket Head Cap Screws (Stainless Steel Equivalent)

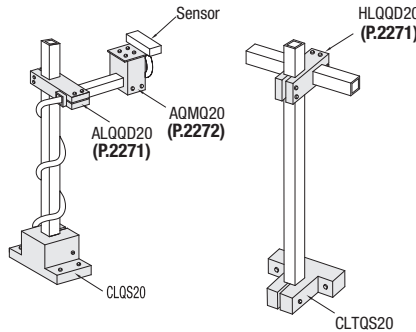
**Accessories:** CB screws (**P.2378**) are included with black oxide/black anodized products, and SCB screws (**P.2379**) are included with the other products, respectively.



Part Number		D <sub>08</sub>	A	B	L	T	F	K	h	H	E	d	d <sub>1</sub>	Z	MA
Type															
CLTQB CLTONM CLTQBM CLTQAM CLTQS	10	+0.077	38	11	29	7	30	4.5	14	10	20	4.5	8	4.5	M4
	12	+0.050			30					11					
	15		48	15	36	9	38		18	13	26	5.5	9.5	5.5	M5
	20	+0.098	52	20	40	10.5	42		19	16	30				
	25	+0.065	73	24	54	12	54	6.5	25	20	35	6.5	11	6.5	M6

The tolerance and perpendicularity of D<sub>08</sub> is before slitting.

Recommended Tolerances of Fitting Shafts: 0—0.12. For stand posts, see **P.2230—2231**. Tightening with a long wrench is recommended.



# Post Clamps

## Overview

### Post Clamp Type Selection Chart

Type		Shapes	Feature	Fastening	Page	
					Round Hole	Square Hole
Perpendicular	Post Clamps used to cross two posts	Standard	Most common type Pitch Configurable Type also included in product lineup	Knob / Clamp Levers	P.2254	—
				Screw Fastening	P.2255—2259	P.2271
		Split	Post-assembly mounting onto posts built-in structures	Screw Fastening	P.2260	—
		T-Shaped Split	Space-saving one-sided post Post-assembly mounting possible	Screw Fastening	P.2261	—
		Rotation	Post angles adjustable	Screw Fastening	P.2263—2264	—
Parallel	Two parallel posts fixable	Standard	Parallel posts fixed.	Screw Fastening	P.2262	—
Tapped	Direct device mounting via tapped holes	Standard	Vertical device mounting on Posts	Knob / Clamp Levers	P.2265—2266	—
				Screw Fastening	P.2267	P.2272
		Split	Post-assembly mounting onto posts in structures used for mounting objects perpendicular to posts.	Screw Fastening	P.2269	—
		Standard	Horizontal device mounting onto Post	Knob / Clamp Levers	P.2265—2266	—
				Screw Fastening	P.2267	P.2272
		Split	Post-assembly mounting onto posts in structures used for mounting objects parallel to posts.	Screw Fastening	P.2269	—
Arm / Bar	Mounting onto perpendicular Strut Clamps as guides	Arm	Post in circumferential rotations via arm mounted onto Post Clamps	Screw Fastening	P.2274	—
		Bar	Round bar as conveyor guides		P.2274	—
Adjustment Mechanism	By mounting below the clamp, fine manual adjustments are possible up to 5 mm	Adjustment Mechanism	By mounting below the clamp, fine manual adjustments of cameras and beam sensors are possible.	Screw Fastening	Online Only Reference Part Type CLAWM	—

\* Products of the same shape include various sizes such as Standard Type and Compact Type.

\* Strut Clamps with Knob / Clamp Lever are suitable for frequent setup changes through manual fastening.