

Casters & Leveling Mounts Assembly

Standard / Conductive

Casters & Leveling Mounts Assembly – Standard / Conductive



Part Number	
Type	Wheel Material (Color)
HCFT / SHCFT	Nylon (Gray)
HCFTU	Urethane (Green)
HCFTM	MC Nylon (Blue)
HCFTD / SHCFTD	Conductive MC Nylon (Black)

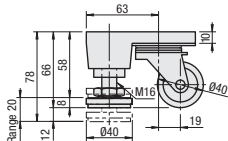
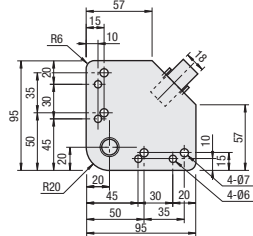
- Only HCFT8-500 is phenol (black).
- HCFTFD250/350 are gray.

No.	Body		Jack Bolt	
	Material	Surface Treatment	Material	Surface Treatment
60	Aluminum Casting Alloy 383.0	Black Paint	1018 Carbon Steel	Trivalent Chromate
130				
250	Low Carbon Steel	Trivalent Chromate (Black)		
350				
500	FCD Cast Iron45	Black Paint		

- Material of jack bolt and caster is 304 Stainless Steel for SHCFT or SHCFTD.

Swivel Caster HCFT

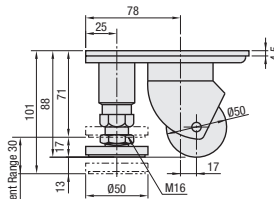
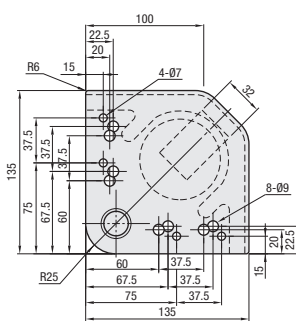
No. 5-60
6-60



Pad Material: EPDM

Applicable screws and nuts are common to M5 and M6

No. 6-250
8-250 HCFT HCFTM HCFTU HCFTD

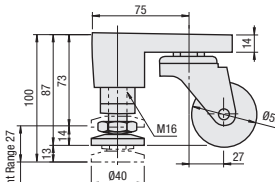
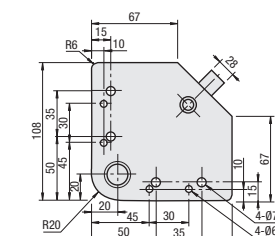


Pad Material: EPDM

Applicable Screws & Nuts are Common to M5 & M6
All the casters swivel 360°.

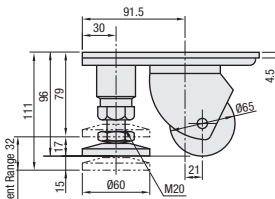
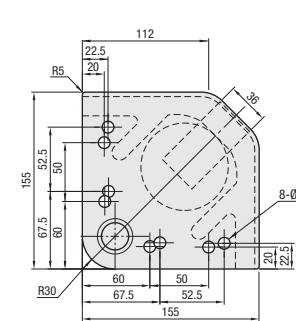
SHCFT Conductive

No. 5-60
6-60



Applicable screws and nuts are common to M5 and M6

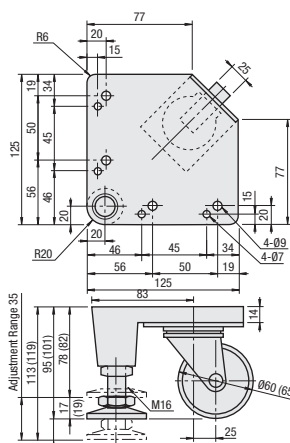
No. 8-350 HCFT HCFTM HCFTU HCFTD



- The adjusting bolt does not protrude from the top face.
- The contact angle of the leveling mount is within approximately $\pm 1.0^\circ$

HCFT SHCFT Conductive HCFTM SHCFTD Conductive HCFTD

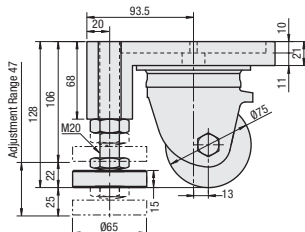
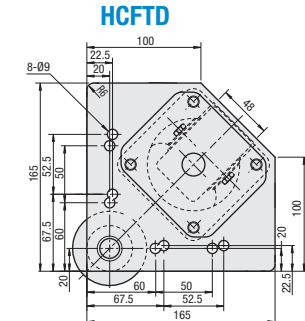
No. 6-130
8-130



- The values in () are for Conductive Type.

Applicable screws and nuts are common to M5 and M6

No. 8-500 HCFT HCFTM HCFTD

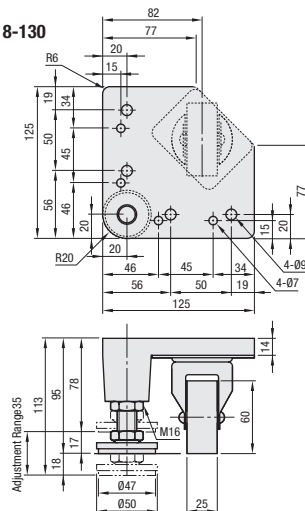


- When moving the unit using the casters, raise the adjustment pads completely.

Casters & Leveling Mounts Assembly

Standard / Conductive, continued

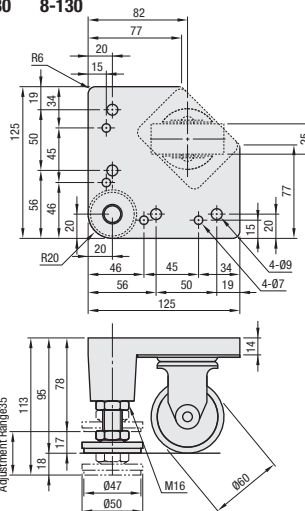
Fixed Caster HCFTK-R No.6-130 8-130



Pad Material: EPDM

- The adjusting bolt does not protrude from the top face.
- The contact angle of the leveling mount is within approximately $\pm 1.0^\circ$

HCFTK-L No.6-130 8-130

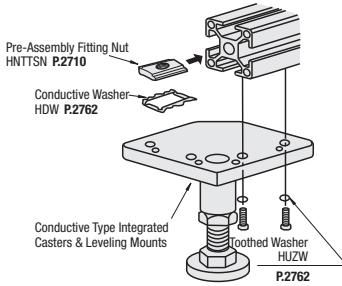


Pad Material: EPDM



Part Number Example	Part Number
HCFT6-130	HCFTK-L6-130

How to Install Conductive Type



- Conductive washers and toothed washers are not included with the Conductive Type.

Part Number		Allowable Load		Mass g	Screws / Nuts		Quantity	Available Types			
Type	No.	Load	kg	N	Screws	Nuts		HCFT	HCFTU	HCFTM	HCFTD
Swivel	HCFT	5	60	60	588	600	4	•	—	—	—
		6		130	1275	1100					
Swivel	HCFT HCFTM HCFTD	8	130	130	1275	1100	4	•	—	•	•
		8		130	1275	1100					
Fixed	HCFTK-L HCFTK-R	6	130	130	1275	1100	4	•	—	—	—
		8		130	1275	1100					
Swivel	HCFT HCFTU HCFTM HCFTD	6	250	250	2452	1445	4	•	•	•	•
		8		350	3432	2170					
Swivel	HCFT HCFTM HCFTD	8	500	500	4902	5600	4	•	—	•	•
		8		500	4902	5600					

- Mounting height of HCFT6-130, HCFT8-130, HCFTK6-130 and HCFTK8-130 is the same, which enables combined use in parallel.
- The stated allowable load is for the caster. Consider the allowable load of the leveling mount to be the same.

Part Number		Allowable Load		Mass g	Screws / Nuts		Quantity
Type	No.	Load	kg	N	Screws	Nuts	
Swivel	SHCFT	5	60	60	588	600	4
		6		130	1275	1100	
Swivel	SHCFT SHCFTD	8	130	130	1275	1100	4
		8		130	1275	1100	

- Pad and caster are made of stainless steel (304 Stainless Steel).
- SHCFTD is not available for No. 5 and 6.
- The stated allowable load is for the caster. Consider the allowable load of the leveling mount to be the same.

Reference: Combined size with aluminum extrusions (MISUMI) (for mounting position, check each dimension.)

- NO. 5 \Rightarrow 5 series
- NO. 6 \Rightarrow 6 series
- NO. 8 \Rightarrow 8 series, 8-45 series



Part Number Alterations	Part Number	(SET / BL)
HCFT6-130	SET	

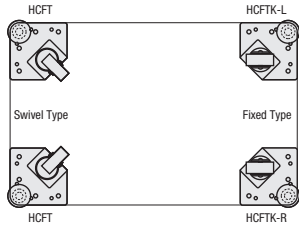
- Alteration BL100, BL150

Alteration	Code	Spec.	Caster Assembly Units			Components		
			Type	No.	Load	Screws	Nuts	Quantity
Applicable Screw Nut Set	SET	Applicable screws and nuts come in a set.	HCFT	5	60	CBM5-15	HNTT5-5	4
			HCFT	6	130	CBM6-15	HNTT6-6	
			HCFT, HCFTK, HCFTM, HCFTD	6	130	CBM6-20	HNTT6-6	
			HCFT, HCFTU, HCFTM, HCFTD	6	250	CBM6-12	HNTT6-6	
			HCFT, HCFTK, HCFTM, HCFTD	8	130	CBM8-25	HNTT8-8	
			HCFT, HCFTU, HCFTM, HCFTD	8	250	CBM8-15	HNTT8-8	
			HCFT, HCFTM, HCFTD	8	350	CBM8-30	HNTT8-8	

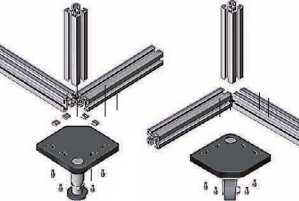
Alterations Code	Leveling Mount Length					
	BL100			BL150		
Spec. Changes the length of standard adjustment pads.	Load	Height from Floor		Load	Height from Floor	
		Standard	After Change		Standard	After Change
	60	78	132	60	78	178
	130	113	152	130	113	200
	250	101	145	250	101	191
	Load	Height from Floor		Load	Height from Floor	
		Standard	After Change		Standard	After Change
	350	111	150	350	111	200
				500	150	210



Application Example



Application Example



Pre-Assembly Fitting Nut HNTTSN (P.2710-2713)
Conductive Washer HDW (P.2762)
Toothed Washer HUZW (P.2762)

*The height from the floor can be increased by using a longer adjusting pad. However, the adjustment pad sticks out from the plate surface.

