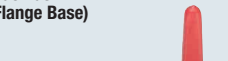
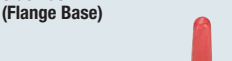


Side Push (Flange Base) / Smooth Stroke (Flange Base)

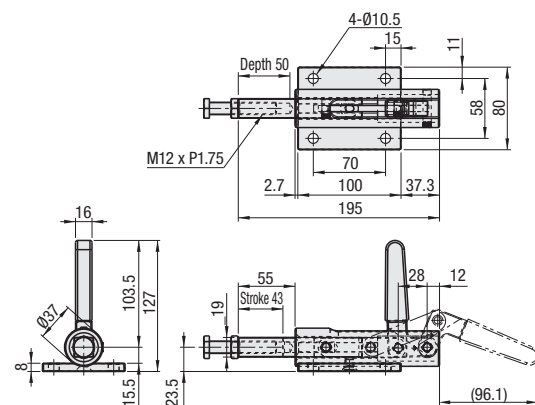
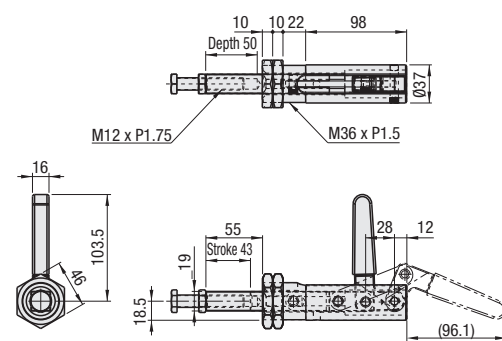
 <p>Clamp Condition *Shaft: Nickel Plating</p>	Part Number	MC07-14	 <p>Clamp Condition *Shaft: Nickel Plating</p>	Part Number	MC07-15
	Body Material	Main Body / Attaching Portion: 1045 Carbon Steel or Equivalent		Body Material	Body / Attaching Portion: 1045 Carbon Steel or Equivalent
	Surface Treatment	*Chemical Conversion Coating		Surface Treatment	*Chemical Conversion Coating
	Tightening Force (N)	43		Tightening Force (N)	43
	Weight (g)	3000		Weight (g)	3000
	Open-Close Angle of Arm	1600		Open-Close Angle of Arm	1280
	Open-Close Angle of Handle	110°		Open-Close Angle of Handle	110°
	Accessories	Steel Bolt		Accessories	Steel Bolt



Part Number	MC07-14
Body Material	Main Body / Attaching Portion: 1045 Carbon Steel or Equivalent
Surface Treatment	*Chemical Conversion Coating
Tightening Force (N)	43
Weight (g)	3000
Open-Close Angle of Arm	1600
Open-Close Angle of Handle	110°
Accessories	Steel Bolt



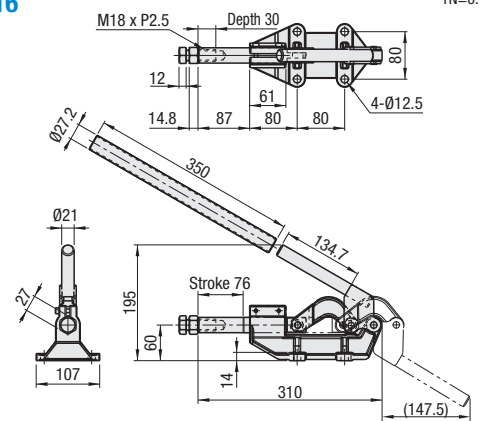
Part Number	MC07-15
Body Material	Body / Attaching Portion: 1045 Carbon Steel or Equivalent
Surface Treatment	*Chemical Conversion Coating
Tightening Force (N)	43
Weight (g)	3000
Open-Close Angle of Arm	1280
Open-Close Angle of Handle	110°
Accessories	Steel Bolt

$$1\text{N}=0.101972\text{kgf}$$

$$1\text{N}=0.101972\text{kgf}$$


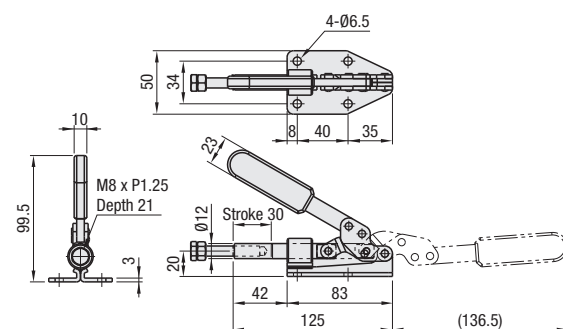
Part Number	MC07-16
Body Material	Main Body: 1018 Carbon Steel or Equivalent Attaching Portion: 65-45-12 S.G. Cast Iron
Surface Treatment	Main Body: *Trivalent Chromate / Attaching Portion: Chemical Conversion Coating
Stroke (mm)	76
Tightening Force (N)	16000
Weight (g)	4360
Open-Close Angle of Handle	173°
Accessories	Steel Bolt, Tube



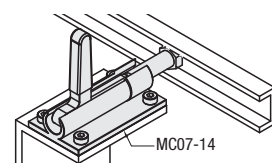
Part Number	MC08-1
Body Material	1018 Carbon Steel or Equivalent
Surface Treatment	*Trivalent Chromate
Oil Free Bushing	MDZB12-20: 1 Pc.
Stroke (mm)	30
Tightening Force (N)	1960
Open-Close Angle of Handle	147°
Weight (g)	380
Accessories	Steel Bolt

$$1\text{N}=0.101972\text{kqf}$$


⚠ Integrated Oil Free Bushing requires no lubrication.

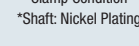


Part Number
MC07-14
MC08-1



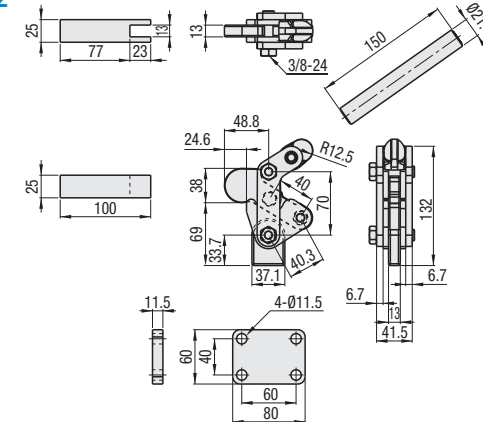
MC07-14

Weldable Clamp (Flange & Straight Base)

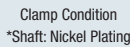
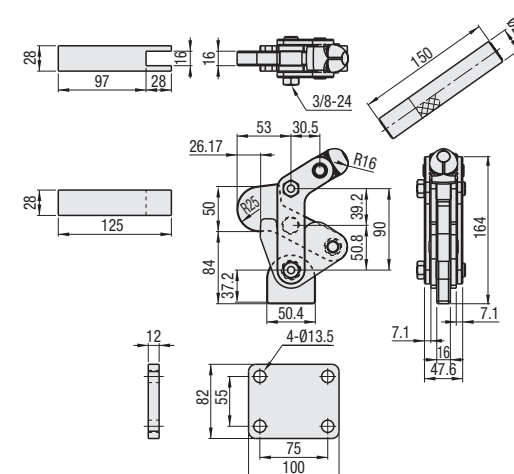


Part Number	MC09-1	MC09-2	MC09-3
Body Material	1018 Carbon Steel or Equivalent with Hardened Bushing		
Weight (g)	845	2130	4100
Tightening Force (N)	1960	4900	9800
Handle Movement Angle	120°	124°	126°
Arm Movement Angle	193°	193°	198°

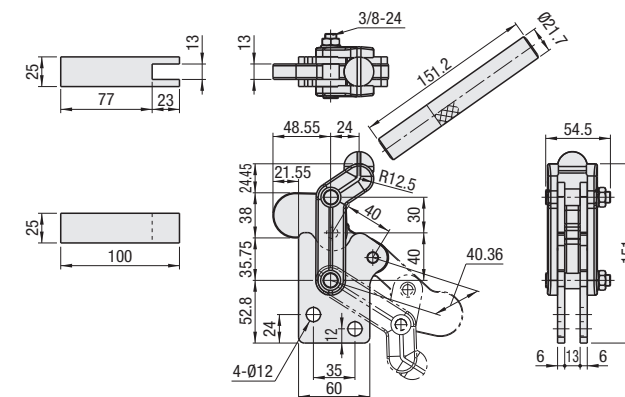
1N=0.101972kgf



1N=0.101972kgf



Part Number	MC09-2S
Body Material	1018 Carbon Steel or Equivalent with Hardened Bushing
Weight (g)	2500
Tightening Force (N)	5000
Handle Movement Angle	124°
Arm Movement Angle	193°

 $1\text{N}=0.101972\text{kgf}$ 

Weldable Clamps are composed of four parts shown to the right; handle, body, base and arm.

- (1) Determine the mounting position of the body.
 - (2) Determine the length of the control arm, then connect to the body arm by welding.
 - (3) Considering the space limited by the fixture, determine the height of the handle, and weld the handle and the body handle receiver.
 - (4) Determine the angle between the body and the supporting plate, and weld them together.
 - (5) Determine how to mount a clamp on to the jig. If the base is used, weld the base and the supporting plate together.
- Assemble a weldable clamp as described above.
- Weldable Clamps can be flexibly assembled depending on different working situations, thus can be used in wide range of application.
 - Heat treatment (hardness 60 HRC min.) ensures abrasion-resistant assembly of the pin constituting the supporting point and the surrounding bushing. The clamps are best for jigs that require frequent use or accuracy.

