

Lead Screw Support Units

Fixed Side Radial Bearing Type

Lead Screws / Slide Screws

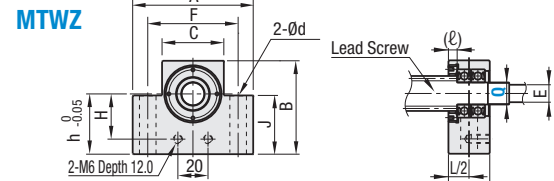
Lead Screw Support Units – Fixed Side Radial Bearing Type



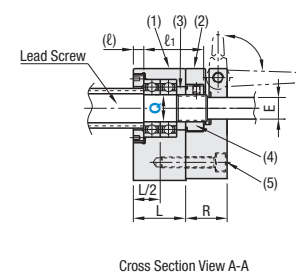
RoHS 10

Support Unit Support Side Set	Type				Material				Surface Treatment	Accessory
	Support Unit Main Body	Support Unit Stop Plate Set	Compact Position Indicator Mount Set	Large Position Indicator Mount Set	(1) Main Body	(2) Stop Plate Set	(3) Collar	(4) Bearing Nut		
Not Included	MTWZ	MTWZ-S	MTWZ-CP	MTWZ-LP	1045 Carbon Steel Equivalent	1018 Carbon Steel Equivalent	1018 Carbon Steel Equivalent	1018 Carbon Steel Equivalent	Black Oxide	Clamp Lever
Included	MTWZ-SET	MTWZ-S-SET	MTWZ-CP-SET	MTWZ-LP-SET						

Lead Screw Support Unit Main Body

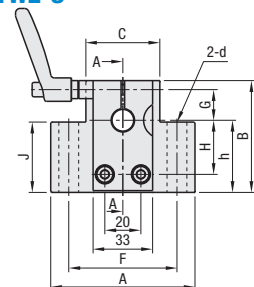


Stop Plate Set

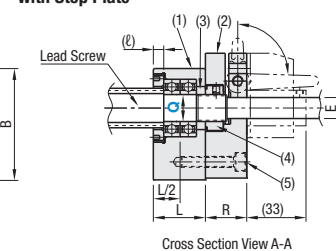


Number	Part Name	Quantity
(1)	Support Unit	1
(2)	Stop Plate Sets	1
(3)	Collar	1
(4)	Bearing Nut (with a Thread Protector)	1
(5)	Hex Socket Head Cap Screw	2

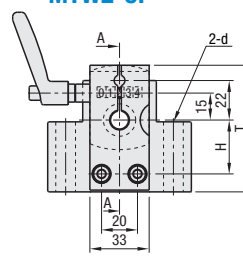
MTWZ-S



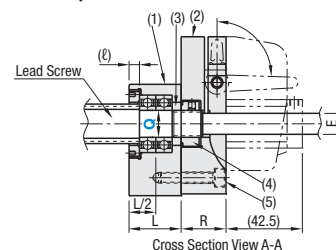
Compact Position Indicator Mount Set with Stop Plate



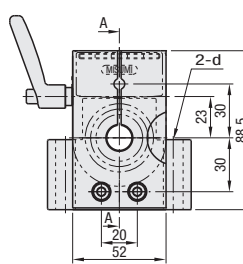
MTWZ-CP



Large Position Indicator Mount Set with Stop Plate

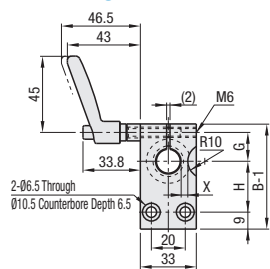


MTWZ-LP

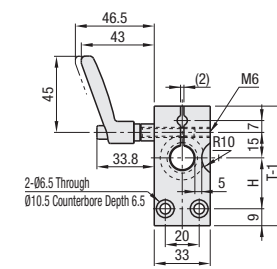


Stop Plate Only Sets

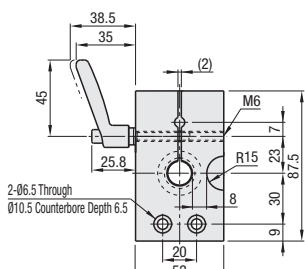
MTWZ-S



MTWZ-CP



MTWZ-LP



Support Unit Fixed Side Accessory Dimensions

Q	Tightening nut			Color Dimensions		
	Model	M Details	Adjustable Spanner Size	ID	OD	Thickness
8	BNR8	M8 x 1.0	14	8	11.5	3
10	BNR10	M10 x 1.0	17	10	14	3
12	BNR12	M12 x 1.0	19	12	15	3
15	BNR15	M15 x 1.0	22	15	20	3

- ⓘ A collar for the clamp lever is not included with Q8. The clamp lever mounting dimensions will be the same as the Large Type.
- ⓘ Do not use without inserting the screw shaft (empty tightening). It may deform, causing it to be unusable.

Part Number Type	Q	A	B	C	F	h	J	H	G	T	L	R	(L)	X	d	E	ℓ ₁	Bearing Nut	Clamp Lever	Bearing Type	Allowable Axial Load (N)
		MTWZ (-SET)	8	52	48	25	38	30	35	20	13	60.5	22	22			6.6	6	24	BNR8	CLDM6-32-M
MTWZ-S (-SET)	10	70	53	36	52	35	34	25	13	65.5	24	23	4.8	4.5	9	8	27	BNR10		B6000ZZ	2300
MTWZ-CP (-SET)	12	70	58	36	52	40	39	30	13	70.5	24	23			10	27	BNR12		B6001ZZ	2600	
MTWZ-LP (-SET)	15	80	62	41	60	40	39	30	17		27	25	5.8	5.5	11	12	31	BNR15		B6002ZZ	2900

ⓘ Dedicated bearing units for Lead Screws. They can support radial and axial loads.

Part Number Example

Part Number
MTWZ15 Fixed side only
MTWZ-CP15-SET Fixed side + support side (MTUZ or MTUZM; *Same material as fixed side)

Lead Screw Support Units

Support Side Type

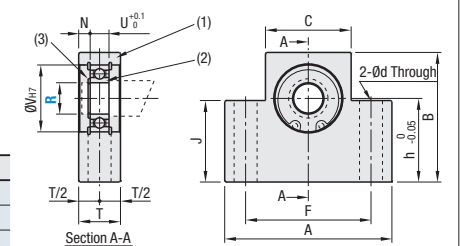
Lead Screw Support Units – Support Side Type



RoHS 10

Type	Material	Surface Treatment
MTUZ	1045 Carbon Steel Equivalent	Black Oxide

Number	Part Name	Quantity
(1)	Housing	1
(2)	Radial Bearing	1
(3)	Retaining Ring for Shaft (Included)	1

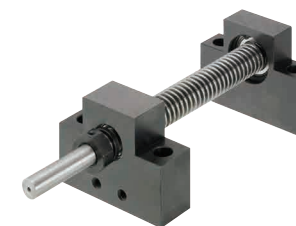


Part Number Type	R	A	B	C	F	h	J	V	T	d	U	N	Bearing Type	Retaining Ring for Bore	Retaining Ring for Shaft
		MTUZ	8	52	48	25	38	30	35	22	20	6.6	7	6.5	B608ZZ
	10	70	53	36	52	35	34	26		9	8	6	B6000ZZ	RTWN26	STWN10
	12	70	58	36	52	40	39	28		9	8	6	B6001ZZ	RTWN28	STWN12
	15	80	62	41	60	40	39	32		11	9	5.5	B6002ZZ	RTWN32	STWN15

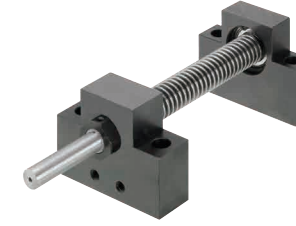
Part Number Example
MTUZ15

Application Example

Support Unit Mounting Procedure



- Insert the lead screw shaft into the fixed side support unit.
- After slipping a collar on, thread the included bearing nut on and temporarily tighten at 1/3 of the specified tightening torque. Mount the support side unit on the support end of the shaft and mount.



- While rotating the screw shaft, gradually tighten the bearing nut to obtain smooth motion from end to end.
- When smooth motion is obtained, tighten to full tightening torque to finish.

Support Unit Bearing Type

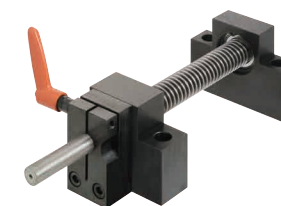
Q	Bearing Type	Allowable Axial Load (N)
8	B608ZZ	1300
10	B6000ZZ	2300
12	B6001ZZ	2600
15	B6002ZZ	2900

ⓘ Use the position indicators within allowed maximum speed ranges.

M	Nut Tightening Torque (Ncm)
8	490
10	930
12	1370
15	2350

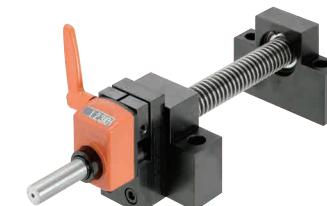
ⓘ Value is for reference only.

Lock Set Type

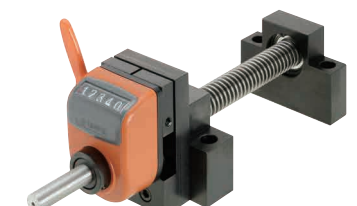


For Position Indicators see P.842
 For Handles see P.3186

Compact Position Indicator Mount Type



Large Position Indicator Mount Type



Q	E	Applicable Position Indicators			
		Type	Compact 4-Digit Type	Compact 5-Digit Type	Large 5-Digit Type
8	6	Standard	DPN_2-CSE6	DPNF_2-CSE6	—
		Front	DPM_2-CSE6	DPMF_2-CSE6	
		Vertical	DPT_2-CSE6	DPTF_2-CSE6	
10	8	Standard	DPN_3-CSE8	DPNF_3-CSE8	—
		Front	DPM_3-CSE8	DPMF_3-CSE8	
		Vertical	DPT_3-CSE8	DPTF_3-CSE8	
12	10	Standard	DPN_3,4-CSE10	DPNF_3,4-CSE10	DPL_3,4-CSE10
		Front	DPM_3,4-CSE10	DPMF_3,4-CSE10	DPR_3,4-CSE10
		Vertical	DTM_3,4-CSE10	DPTF_3,4-CSE10	DPZ_3,4-CSE10
15	12	Standard	DPN_4,5-CSE12	DPNF_4,5-CSE12	DPL_3,4-CSE12
		Front	DPM_4,5-CSE12	DPMF_4,5-CSE12	DPR_3,4-CSE12
		Vertical	DPT_4,5-CSE12	DPTF_4,5-CSE12	DPZ_3,4-CSE12

ⓘ For silver covers, order with DP__ changed to DS__.

Lead Screws / Slide Screws