



Please, refer to website for current Pricing and Lead Time

Quick Exhaust Valves

Standard Concentrated Exhaust EQXC Aluminum	Standard Open Air (with exhaust) EQXCE Body: Aluminum Needle portion: Brass (Electroless Nickel Plating) Element: Polyvinyl Formal	Straight Open Air EQUS Polybutylene Terephthalate	Union Open Air (with exhaust) EQEJ Polybutylene Terephthalate Needle portion: Brass (Electroless Nickel Plating) Element: Polyvinyl Formal
---	--	---	--

Standard Concentrated Exhaust Type

Type	Part Number	Tube Outer Diameter (mm) D1	Tube Outer Diameter (mm) D2	R (PT)	A	B	(L1)	(L2)	C1	C2	E1	E2	Opposite Side h	Effective Sectional Area (mm ²)		Mass (g)	Unit Price		
														IN...OUT	OUT...EX		Qty. 1-9	10 or more	
EQXC	4	4	8	1 (R1/8)	8	25.5	21.5	14	10.9	18.2	46.5	23.8	15	4	8	19			
	6	6	10	1 (R1/8)	8	29	11	14	11.7	18.2	46.8	24.1	15	6	9	27			
	6	6	10	2 (R1/4)	11	31	25	16	11.7	20.7	54.4	28.1	18	9	16	29			
	8	8	10	1 (R1/8)	8	29	25	16	18.2	20.7	59.7	33.4	18	12	16	31			

Standard Open Air Type (With Exhaust Throttle)

Type	Part Number	Tube Outer Diameter (mm) D	R (PT)	Nominal	A	B	(L1)	(L2)	P	C	E1				Opposite Side h	Effective Sectional Area (mm ²)		Mass (g)	Unit Price		
											Max	Min	E2	E3		IN...OUT	OUT...EX		Qty. 1-9	10 or more	
EQXCE	4	4	1 (R1/8)	1	8	25.5	21.5	14	15	10.9	66.7	61.8	54.3	23.8	15	4	8	23			
	6	6	1 (R1/8)	1	8	25.5	21.5	14	15	11.7	67	62.1	54.6	24.1	15	6	8	23			
	6	6	2 (R1/4)	1	11	31	25	16	18	11.7	77.4	71.6	63.1	28.1	18	9	15	35			
	8	8	1 (R1/8)	1	8	29	25	16	18	18.2	82.7	76.9	68.4	33.4	18	12	15	37			

Straight Open Air Type

Type	Part Number	Tube Outer Diameter (mm) D	B	L	P1	P2	P3	C	Effective Sectional Area (mm ²)		Mass (g)	Unit Price	
									IN...OUT	OUT...EX		Qty. 1-9	10 or more
EQUS	4	4	34.6	11	8.4	10	9	11	1.8	1.8	3.3		
	6	6	37	12	10.4	12	11	11.6	4	4	4.9		

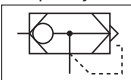
Union Open Air Type (With Exhaust Throttle)

Type	Part Number	Tube Outer Diameter (mm) D	B	L1	L2	L3	L4		P1	P2	P3	C	E	Effective Sectional Area (mm ²)		Mass (g)	Unit Price	
							Max	Min						IN...OUT	OUT...EX		Qty. 1-9	10 or more
EQEJ	4	4	44.7	34.6	28.6	18.5	17.4	13.5	9	10	8.4	11	11	1.8	1.7	8.3		
	6	6	46.7	37	29.4	20	19	14	11	12	10.4	11.6	13	4	3.2	12		

Specification

Permissible Fluid	Air
Operating Pressure Range	0.1~0.7MPa
Withstanding Pressure	1.35MPa
Operating Temp. Range	5~60°C (Not to be frozen)
Min. Operating Pressure	0.05MPa

Graphic Symbol



Order Example: Part Number - D2 - R (PT)
EQXC4 - 8 - 1

Part Number - R (PT) - Nominal
EQXCE4 - 1 - 1

Part Number
EQUS4

Features

- Applicable to high-speed driving cylinder since air is quickly exhausted.
- For exhaust throttle type, the driving speed of cylinder can be adjusted.

Notes

- For exhaust throttle type, due to clogging of elements, exhaust resistance may increase and cause deterioration in general system function. In such case, discontinue the use and replace the main body.
- Not applicable as shuttle valve.



Days to Ship



Air Regulators with Filter, Pressure Gauges

Air Regulators with Filter MSFR RoHS	MSFR (Regulators with Filter) MSAFE5 (Replacement Element for Regulator with Filter, 5μ) MSPGN1 (Pressure Gauge)	(MSFR only) Pressure Gauge 1pc. Bracket 1pc. Schematic JIS Code
--	---	--

Part Number	Type	Rc (PT)	Non-Filtration Rating (μ)	Operating Pressure Range (MPa)	Set Pressure Range (MPa)	Pressure Resistance (MPa)	Ambient Temperature Range (°C)	Permissible Fluid	Mass (g)	Unit Price Qty. 1-4	Part Number	Unit Price Qty. 1-4
10A	3/8	5	0.05~1.0	0.05~0.85	1.5	5~60	Air	460		MSPGN1	Pressure Gauge	

The drain valve (20) in the structural drawing automatically drains when the pressure declines to 0.05 MPa or less.

Characteristic Data

This graph shows that when the primary pressure is constant at 0.7 MPa, the secondary set pressure drops according to the flow rate used.

Components List

Part No.	Name	Material	Part No.	Name	Material
1	Body	JIS-ADC10	9	Piston	Polyacetal
2	Bonnets	Polyacetal	10	Adjusting Spring	JIS-SWC
3	Bonnet Gasket	Rubber-NBR	11	Spring Pressers	JIS-C3604CD
4	Case Guard	PC	12	Handle	Polyacetal
5	Case	PC	13	Adjusting Screw	1018 Carbon Steel
6	Case Gasket	Rubber-NBR	14	Suction Pipe	JIS-C1220T
7	Valve	Rubber-NBR	15	Valve Support	Polyacetal
8	Valve Spring	304 Stainless Steel	16	Baffles	Polyacetal
17	Deflector	Polyacetal	21	Lock Nut	Polyacetal
18	Element	PE	22	Gauge Plug	4137 Alloy Steel
19	Baffle Presser	Polyacetal	23	Bracket	Low Carbon Steel
20	Drain Valve	Polyacetal	24	Pressure Gauge	-



Order Example: Part Number MSFR8A



Days to Ship



Price

Quantity	Volume Discount Rate	
	Rate	Price List
1-4		
5-		

For larger quantity orders "Days to Ship" may differ from published catalog term P.91

Straight GPCS RoHS	 Opposite Side 14
--	----------------------

Type	Part Number	No.	T	A	B	L	Mass (g)	Unit Price	
								Qty. 1-9	10 or more
GPCS	1	1	R1/8	8	21	17	8		
	2	2	R1/4	11	24	18	16.5		
	5	5	M5x0.8	3	16.5	13.5	6		

Bulkhead Straight GPMS RoHS	 Opposite Side 14
---	----------------------

Type	Part Number	Tube Outer Diameter D	M	A	B	L	P	C	G	Opp. Side H	Mass (g)	Unit Price	
												Qty. 1-9	10 or more
GPMS	4	4	M12x1.0	16	39	17	16	15	5	14	12.5		
	6	6	M14x1.0	14	42.5	17	19	17	5	17	16		
	8	8	M16x1.0	17	45.5	18	22	18.5	6	19	21.5		

Specification

Permissible Fluid	Air
Indicated Pressure Range	0~0.8MPa
Precision	±5% (Full Scale)
Operating Temp. Range	0~60°C
Scale Angle	150°
Cap	Acrylic
Material	Metal Body: Brass (Nickel Plating) Resin Body: PBT

- Direction of GPMS, GPUS can be changed by rotating hexagonal part of gauge body.

Nipple GPJS RoHS	 Opposite Side 14
--	----------------------

Type	Part Number	Tube Outer Diameter D	B	L	C	Mass (g)	Unit Price	
							Qty. 1-9	10 or more
GPJS	4	4	36	23	15	8		
	6	6	38	25	17	9.5		
	8	8	35	21	18.5	12.5		

Union Straight GPUS RoHS	 Opposite Side 14
--	----------------------

Type	Part Number	Tube Outer Diameter D	P	C	E1	E2	Mass (g)	Unit Price	
								Qty. 1-9	10 or more
GPUS	4	4	10	15	17	24.5	12.5		
	6	6	13	17	20	26	15.5		
	8	8	15	18.5	22	28	20		

Order Example: Part Number GPCS2



Days to Ship

* Limits to display position error at single stroke deflection from 0 to maximum 0.8MPa.