

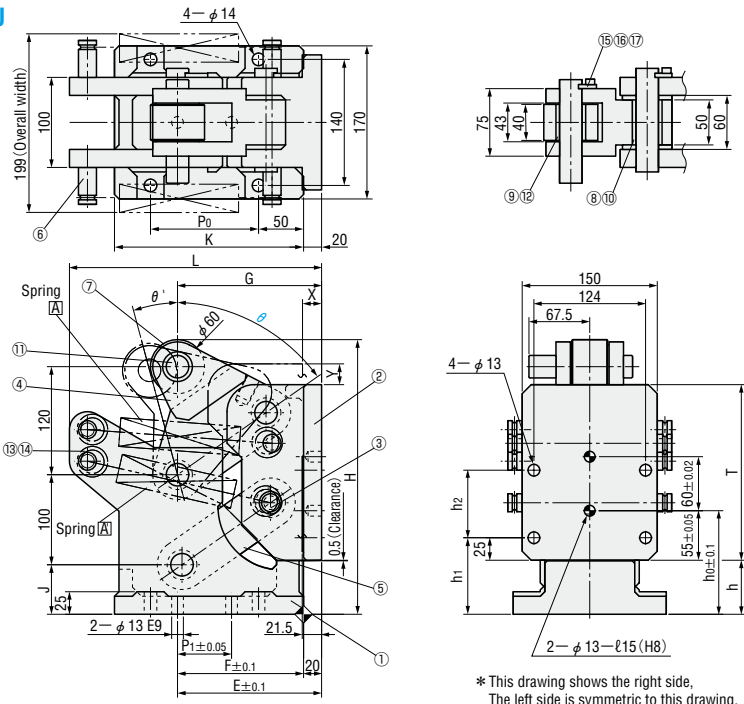
PARALLEL LINK UNITS

PARALLEL LINK UNITS

— WIDE TYPE —



MPHU



■ Components list

No.	Name	Qty.	Material & remarks
①	Base	1	Equivalent to FCD600
②	Bracket	1	Equivalent to FCD600
③	Hinge pin	1	S45C
④	Arm	1	S45C
⑤	Arm	1	S45C
⑥	Tension spring pin	6	SS400
⑦	Roller	1	S45C
⑧	Oil-free bushing	4	Copper alloy
⑨	Oil-free bushing	1	Copper alloy
⑩	Oil-free washer	8	Copper alloy
⑪	Hinge pin	4	S45C
⑫	Oil-free washer	2	Copper alloy
⑬	Tension spring	4	SWP-A
⑭	Ring for tension spring	8	SS400
⑮	Key	5	SS400
⑯	Hexagon socket head cap bolt	10	M6×20
⑰	Spring washer	10	For M6

■ Spring force

θ	Spring	Free length (mm)	Initial length (mm)	Initial tension N (kgf)	Final length (mm)	Final tension N (kgf)	
45	A	130.0	144.1	174.6×2 (17.9×2)	168.0	302.0×2 (30.9×2)	
	A		143.3	170.4×2 (17.4×2)	170.0	312.7×2 (32.0×2)	
55	A		147.0	190.1×2 (19.4×2)	168.4	304.2×2 (31.1×2)	
	A		146.6	188.0×2 (19.2×2)	171.5	320.7×2 (32.8×2)	
70	A		174.0	191.9	162.5×2 (16.6×2)	235.9	317.4×2 (32.4×2)
	A			196.0	176.9×2 (18.1×2)	240.3	332.9×2 (34.0×2)

θ	θ'	E	F	G	H	J	K	L	T	X	Y	P ₀	P ₁	h	h ₀	h ₁	h ₂	Loading capacity (kgf)
45	15	160	140	160	305	55	210	280	210	24.9	19.1	120	60	60	115	85	77	92 max.
55		195	165	190	310	60	235	315	195	21.2	23.1							
70	25	185	165	190	310	60	235	315	190	27.9	43.8	145	85	50	105	75	55	72 max.

Catalog No.	(θ)	R/L
MPHU	45	R · L
	55	
	70	

Drivers conforming to MPHU45 and MPHU55 are MHDA and MHDFCA. Driver for MPHU70 is MHDC. (P.1389 · 1390)

Order Catalog No. θ - R/L
MPHU 45 - L

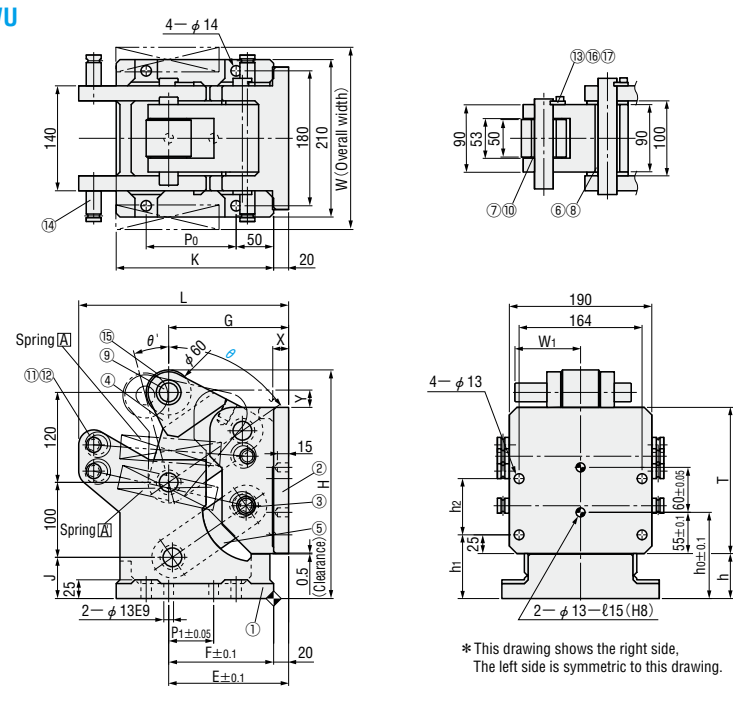
Days to Ship Quotation

Price Quotation

Alteration	Code	Spec.
	J	Add a 10mm high and 5mm thickness.



MPHWU



■ Components list

No.	Name	Qty.	Material & remarks
①	Base	1	Equivalent to FCD600
②	Bracket	1	Equivalent to FCD600
③	Hinge pin	1	S45C
④	Arm	1	S45C
⑤	Arm	1	S45C
⑥	Oil-free bushing	4	Copper alloy
⑦	Oil-free bushing	1	Copper alloy
⑧	Oil-free washer	8	Copper alloy
⑨	Hinge pin	4	S45C
⑩	Oil-free washer	2	Copper alloy
⑪	Tension spring	4	SWP-A
⑫	Ring for tension spring	8	SS400
⑬	Key	5	SS400
⑭	Tension spring pin	6	SS400
⑮	Roller	1	S45C
⑯	Hexagon socket head cap bolt	10	M6×20
⑰	Spring washer	10	For M6

■ Spring force

θ	Spring	Free length (mm)	Initial length (mm)	Initial tension N (kgf)	Final length (mm)	Final tension N (kgf)	
45	A	130.0	144.1	174.6×2 (17.9×2)	168.0	302.0×2 (30.9×2)	
	A		143.4	170.9×2 (17.5×2)	170.1	313.2×2 (32.0×2)	
55	A		147.0	190.1×2 (19.4×2)	168.4	304.2×2 (31.1×2)	
	A		146.6	188.0×2 (19.2×2)	171.5	320.7×2 (32.8×2)	
70	A		174.0	191.9	162.5×2 (16.6×2)	235.9	317.4×2 (32.4×2)
	A			196.0	176.9×2 (18.1×2)	240.3	332.9×2 (34.0×2)

θ	θ'	W	W ₁	E	F	G	H	J	K	L	T	X	Y	P ₀	P ₁	h	h ₀	h ₁	h ₂	Loading capacity (kgf)
45	15	239	100	160	140	160	305	55	210	280	210	24.9	19.1	120	60	60	115	85	77	92 max.
55		195	78	185	165	190	310	60	235	315	195	21.2	23.1							
70	25	243	78	185	165	190	310	60	235	315	190	27.9	43.8	145	85	50	105	75	55	72 max.

Catalog No.	(θ)	R/L
MPHWU	45	R · L
	55	
	70	

Driver conforming to MPHWU45 and MPHWU55 is MHDAW. Driver for MPHWU70 is MHDAW. (P.1389 · 1390)

Order Catalog No. θ - R/L
MPHWU 45 - R

Days to Ship Quotation

Price Quotation

Alteration	Code	Spec.
	J	Add a 10mm high and 5mm thickness.