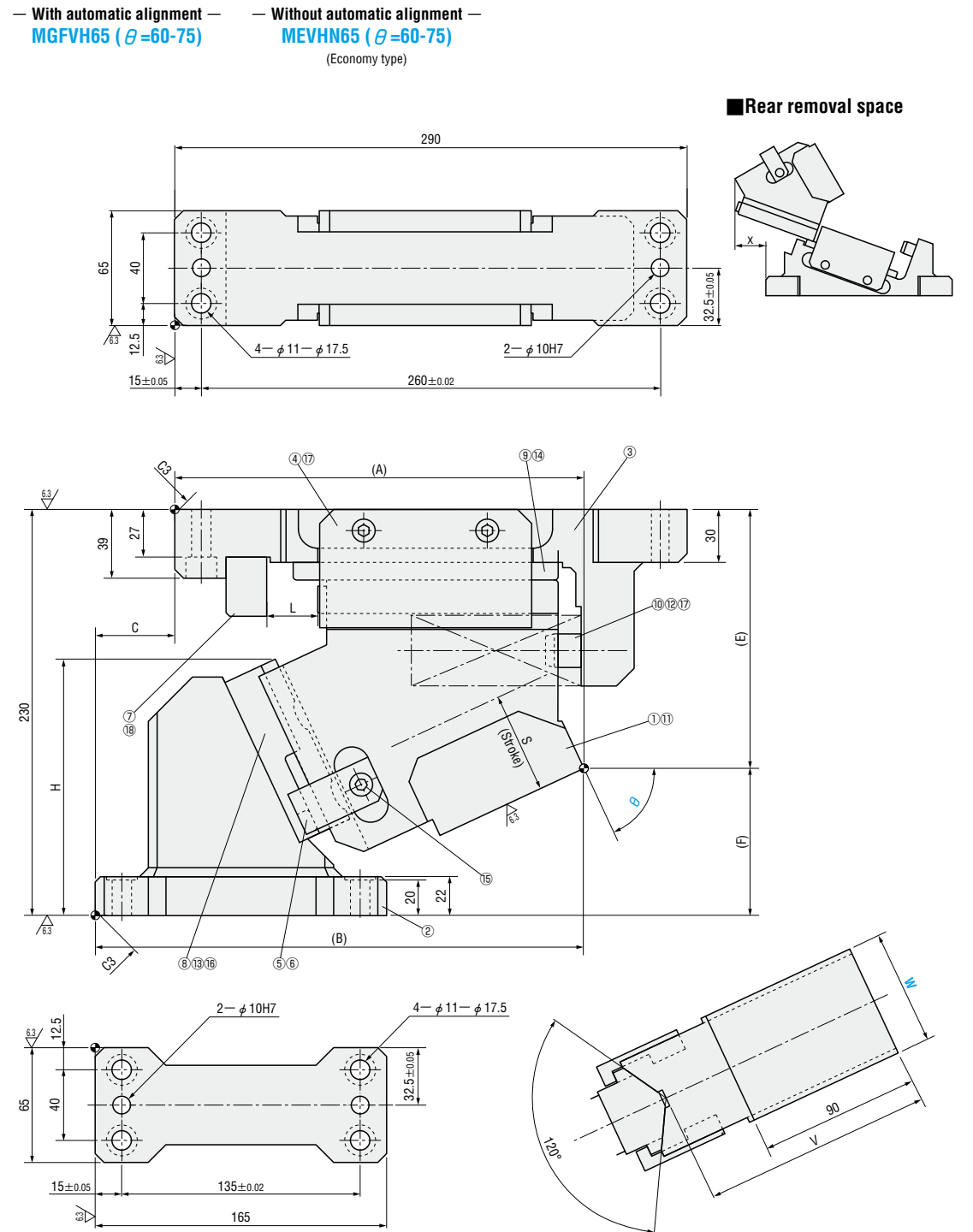


# FLYING CAM UNITS FOR HEAVY LOAD PIERCE

— MGFVH · MEVHN —



■ Components table P.1232

W	$\theta$	A	B	C	E	F	H	L	V	x
65	60	234.5	244.5	10	145.31	84.69	159.8	35	90	64
	65	231.79	276.79	45	146.72	83.28	145.2	29	130	86
	70	228.97	273.97		147.89	82.11	159	23		85
	75	233.82	278.82		167.79	62.21	153.5	18		80

Slide Stroke S	Working force KN (tonf)		Spring load N (kgf)			Total weight kg	Catalog No.	W	$\theta$	
	Standard working force	Max. working force	Preload	5mm before bottom dead center	Max. load					
70.0	68.6 (7.0)	137.3 (14.0)	0 (0.0)	5561(567.0)	5989(610.7)	16.4	—With automatic alignment— <b>MGFVH</b>	65	60	
68.5				5506(561.5)	5936(605.3)	18.0			65	
67.2				5429(553.6)	5863(597.8)	18.0			—Without automatic alignment— <b>MEVHN</b> (Economy type)	70
69.5				4878(497.4)	5258(536.1)	20.0			75	

Order **Catalog No.** **W** —  **$\theta$**   
**MGFVH** **65** — **60**

Days to Ship **Quotation**

Price **Quotation**