

# SELECT RETAINER SETS

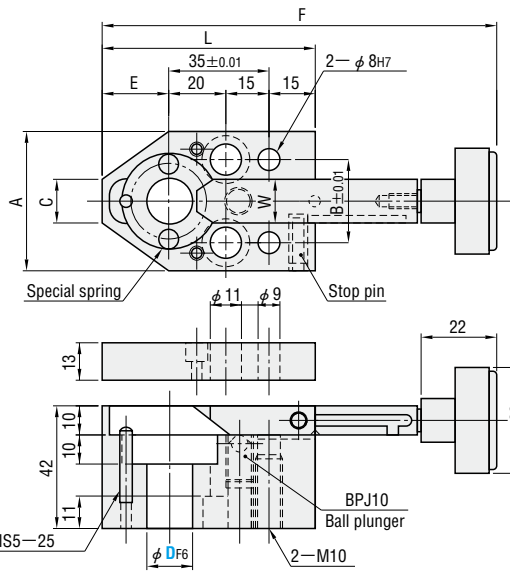
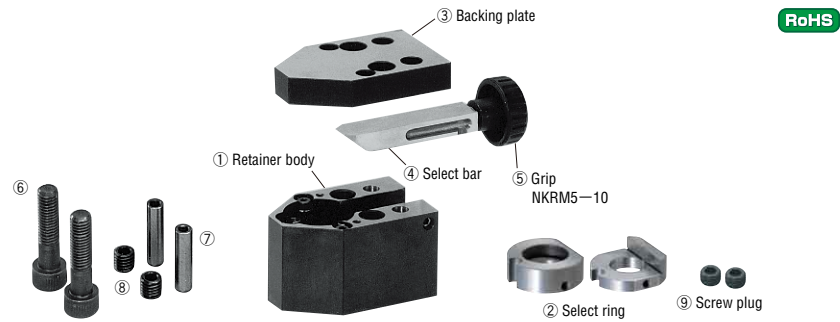
—STANDARD MANUAL TYPE—

ST=10mm

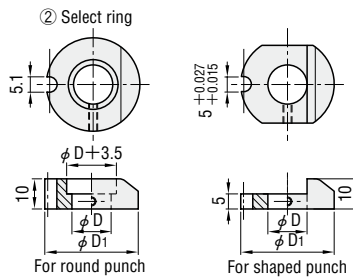
PATENTED

Check the precautions on P.749 and information concerning assembly of the select ring and punch on P.750.

Catalog No.	
For round punch	For shaped punch
SLS—EH	SLS—FH



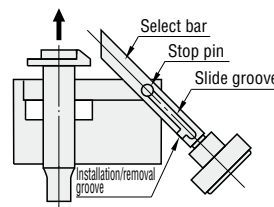
- ① M Equivalent to SCM420
- ② H 55~58HRC (depth 1 mm)
- ③ S Black oxide (Fe<sub>3</sub>O<sub>4</sub>)
- ④ M SK4
- ⑤ H 56~60HRC



Catalog No. Type	D	A	B	C	E	L	W	D <sub>1</sub>	F	A	Base unit price 1~9 sets	
											SLS—EH	SLS—FH
For round punch SLS—EH	10	44	24	12	20	70	11	25	94~124	⑥CB10—60 ⑦MSTM8—45 ⑧MSW10 ⑨MSW3	<b>Quotation</b>	
	13	48	28	15	23	73	15	31	97~127			
	16	48	28	15	23	73	15	31	97~132			
For shaped punch SLS—FH	20	50	30	20	25	75	17	35	99~139	<b>Quotation</b>		
	25	58	38	25	27	77	23	40	101~141			
	32	68	48	32	31	81	30	47	105~155			

Order Catalog No. SLS—EH10

EX Example



Days to Ship **Quotation**

Price **Quotation**

**Features**

- The ball plunger that is set in the select bar recession prevents the select bar from being displaced by vibration during punching.
- The select bar is fastened by a stop pin and cannot be disconnected from the retainer body.

**Punch replacement**

- The punch can be replaced easily by removing the backing plate and lifting up the select bar.
- The select bar can be easily removed by using the installation/removal groove.

**Precaution**

- The select bar is locked in place by a ball plunger. However if the body is installed vertically, vibration during punching may cause the select bar to move downwards, resulting in malfunction.

• Use a punch with head thickness  $5^{+0.03}_{-0.01}$ . For details, refer to the list of features on P.749.

# SELECT RETAINER SETS

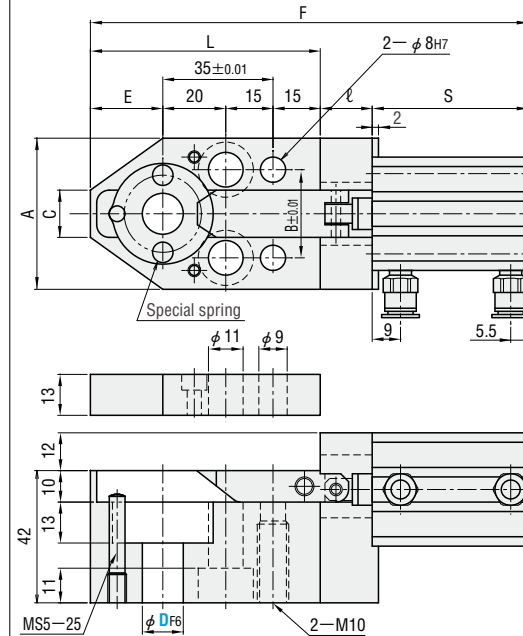
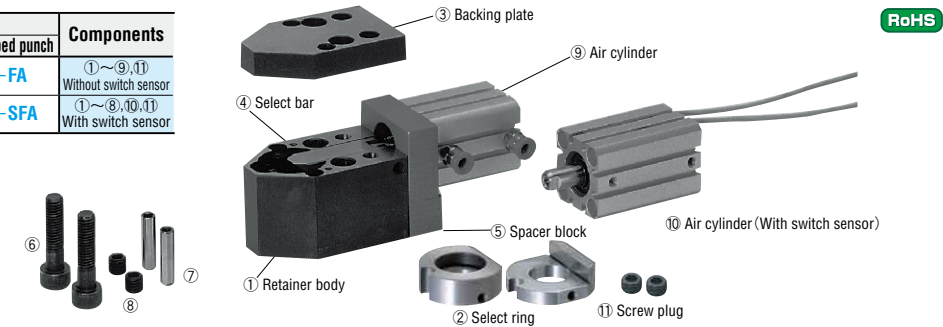
—AIR TYPE FOR HEAVY LOAD—

ST=10mm

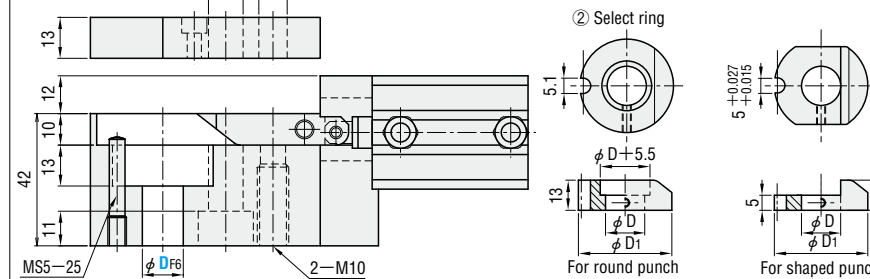
PATENTED

Check the precautions on P.749 and information concerning assembly of the select ring and punch on P.750.

Catalog No.		Components
For round punch	For shaped punch	
SLA—EA	SLA—FA	①~⑨,⑪ Without switch sensor
SLA—SEA	SLA—SFA	①~⑨,⑩,⑪ With switch sensor



- ① M Equivalent to SCM420
- ② H 55~58HRC (Depth 1 mm)
- ③ S Black oxide (Fe<sub>3</sub>O<sub>4</sub>)
- ④ M SK4
- ⑤ H 56~60HRC
- ⑥ M S45C
- ⑦⑩ Air cylinder specification
- Operating method Double-action
- Pressure used 0.4~1.0MPa (4.1~10.2kgf/cm<sup>2</sup>)
- Cylinder inner dia. φ20
- ⑧ 2-wire type contact switch
- Voltage used DC24V
- AC100V
- Lead wire length 3m



Catalog No. Type	D	A	B	C	E	L	ℓ	D <sub>1</sub>	Without sensor		With sensor		A	Base unit price 1~9 sets								
									S	F	S	F		SLA—EA	SLA—FA	SLA—SEA	SLA—SFA					
—Without switch sensor—														<b>Quotation</b>								
For round punch	SLA—EA	10	44	24	12	20	70	13.5	25	49.5	133	59.5	143					⑥CB10—60 ⑦MSTM8—45 ⑧MSW10 ⑪MSW3				
For shaped punch	SLA—FA	13	48	28	15	23	73	16.5	31	139	139	149										
—With switch sensor—																						
For round punch	SLA—SEA	16	48	28	15	23	73	21.5	31	54.5	149	64.5	159									
For shaped punch	SLA—SFA	20	50	30	20	25	75	28.5	35	59.5	163	69.5	173									

Order Catalog No. SLA—EA10

Alterations Catalog No. — (JLC-JNC-TLC-BPC)  
SLA—EA10 — JLC

Days to Ship **Quotation**

Price **Quotation**

**Features**

- These select retainers are designed so that they can be used with punches for heavy load.
- High durability: The body is carburized to 55~58 HRC, eliminating the risk of seizure or uneven wear.
- High rigidity: Because the body contains few openings, there is no risk of malfunctions resulting from deformation.

**Precautions**

- Use a punch with head thickness  $8^{+0.03}_{-0.01}$ . For details, refer to the list of features on P.749.

Alteration	Code	Spec.	1Code
	JLC	The provided one-touch pipe coupling is changed to an L-shape (elbow) type.	
	JNC	No pipe coupling Air cylinder tap (M5×0.8)	
	TLC	Coupling position change (cylinder direction change)	<b>Quotation</b>
		Standard position TLC90 TLC180 TLC270	
	BPC	A ball plunger is installed on the select bar, and a recession is machined in the backing plate.	