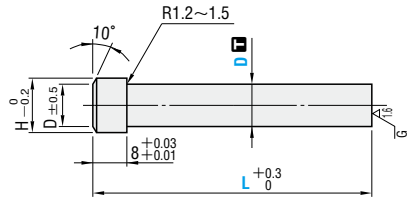


PUNCH BLANKS

Heavy load punch blanks

RoHS

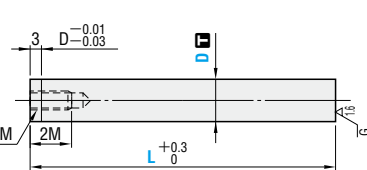


Catalog No.	Shank diameter tolerance	M	H
APB	D _{m5}	Equivalent to SKH51	61~64HRC
AHB	D _{m5}	Powdered high-speed steel	64~67HRC
A-APB	D ^{+0.005} ₀	Equivalent to SKH51	61~64HRC
A-AHB	D ^{+0.005} ₀	Powdered high-speed steel	64~67HRC

H	Catalog No.		10mm increments	Base unit price 1~9 pieces			
	Type	D		L	APB	AHB	A-APB
10	(D _{m5}) APB AHB	5	50~80				
11		6					
13		8					
15	(D ^{+0.005}) A-APB A-AHB	10	50~100	Quotation			
18		13					
21		16					
25		20					
30		25					

Tapped punch blanks

RoHS

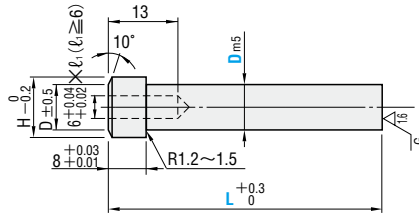


Catalog No.	Shank diameter tolerance	M	H
MPB	D _{m5}	Equivalent to SKD11	60~63HRC
MPHB	D _{m5}	Powdered high-speed steel	64~67HRC
A-MPB	D ^{+0.005} ₀	Equivalent to SKD11	60~63HRC
A-MPHB	D ^{+0.005} ₀	Powdered high-speed steel	64~67HRC

M	Catalog No.		10mm increments	Base unit price 1~9 pieces			
	Type	D		L	MPB	A-MPB	MPHB
3	(D _{m5}) MPB MPHB	5	40~80				
4		6					
5		8					
6	(D ^{+0.005}) A-MPB A-MPHB	13	40~100	Quotation			
		16					
		20					
		25					

Heavy load punch blanks with dowel holes

RoHS



Catalog No.	Shank diameter tolerance	M	H
APB-C	D _{m5}	Equivalent to SKH51	61~64HRC
AHB-C	D _{m5}	Powdered high-speed steel	64~67HRC

H	Catalog No.		10mm increments	Base unit price 1~9 pieces	
	Type	D		L	APB-C
15	(D _{m5}) APB-C AHB-C	10	50~100	Quotation	
18		13			
21		16			
25		20			
30		25			

Alterations Catalog No. - L(LC) - (KC-WKC, etc.)
MPB 10 - LC85

APB · A-APB · AHB · A-AHB · APB-C · AHB-C · AJB · A-AJB · LFAJB · A-LFAJB · AHJB-C · AHB-C

Alteration	Code	Spec.	1Code
Alterations to full length	LC	Full length change APB-AHB-A-APB-A-AHB-APB-C-AHB-C 20≤L<LC 0.1mm increments 40≤L<LC 0.1mm increments AHJB-C-LFAJB-LFAJB-A-LFAJB 50≤L<LC 0.1mm increments S dimension is shortened accordingly. (If combined with LKC-LKZ, 0.01mm increments can be selected.)	Quotation
	LKC	Full length tolerance change L ^{+0.3} ₀ → +0.05	
	LKZ	Full length tolerance change L ^{+0.3} ₀ → +0.01	
Others	KC	Addition of single key flat to head	Quotation
	WKC	Addition of double key flats in parallel	
	NC	The jector pin is removed. Cannot be combined with AC.	
	AC	The jector pin is removed to create an air path and the side vent hole is plugged from the inside by inserting a resin (ABS) ring. Cannot be used for LFAJB-A-LFAJB.	

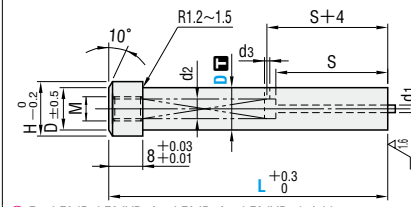
MPB · A-MPB · MJB · MPH · A-MPHB · A-MJB

Alteration	Code	Spec.	1Code
Alterations to full length	LC	Full length change MPB-A-MPB-MJB-MPH-A-MPHB 20≤L<LC 0.1mm increments MJB-A-MJB 30≤L<LC 0.1mm increments S dimension is shortened accordingly. (If combined with LKC-LKZ, 0.01mm increments can be selected.)	Quotation
	LKC	Full length tolerance change L ^{+0.3} ₀ → +0.05	
	LKZ	Full length tolerance change L ^{+0.3} ₀ → +0.01	
Others	KC	Addition of single key flat Cannot be used for DS.	Quotation
	WKC	Addition of double key flats in parallel Cannot be used for DS.	
	NC	The jector pin is removed.	

Calculating the projection length of the jector pin (reference value) P.241

Jector punch blanks for heavy load

RoHS

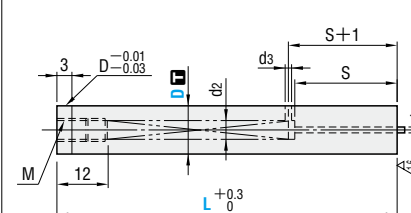


For LFAJB-LFAJB-A-LFAJB-A-LFAJB, ds (side hole) is not provided.

Catalog No.	Shank diameter tolerance	M	H
AJB	D _{m5}	Powdered high-speed steel	64~67HRC
AJVB	D _{m5}		
LFAJB	D _{m5}		
LFAJB	D _{m5}		
A-AJB	D ^{+0.005} ₀	Powdered high-speed steel	64~67HRC
A-AJVB	D ^{+0.005} ₀		
A-LFAJB	D ^{+0.005} ₀		
A-LFAJB	D ^{+0.005} ₀		

Tapped jector punch blanks

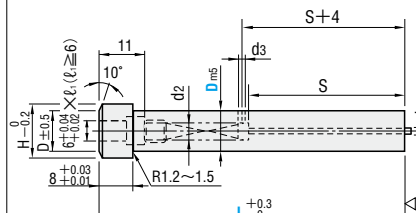
RoHS



Catalog No.	Shank diameter tolerance	M	H
MJB	D _{m5}	Equivalent to SKD11	60~63HRC
A-MJB	D ^{+0.005} ₀	Equivalent to SKD11	60~63HRC

Heavy-load jector punch blanks with dowel holes

RoHS



Catalog No.	Shank diameter tolerance	M	H
AHJB-C	D _{m5}	Equivalent to SKH51	61~64HRC
AHJB-C	D _{m5}	Equivalent to SKH51	61~64HRC

Jector pin diameter	d1 (hole dia.)	d2	d3	S	M	H	Catalog No.		Base unit price 1~9 pieces					
							Type	D	L	AJB	A-AJB	AJVB	A-AJVB	
1.4	1.5	3.4	1.5	28	4	13	(D _{m5}) AJB	8	(50)~130	Quotation	L≤100	100<L≤130	L≤100	100<L≤130
1.7	1.8	15					10							
		18					13							
2.7	2.8	4.4	36	5	21	(D ^{+0.005}) AJVB	16	80~(130)	Quotation	L≤100	100<L≤130	L≤100	100<L≤130	
		21				16								
		25				20								
		30				25								
		30				25								

L(50)→S=24 For AJVB-A-AJVB, max. L is 100. Details of jector pins P.239

Jector pin diameter	d1 (hole dia.)	d2	S	M	H	Catalog No.		Base unit price 1~9 pieces					
						Type	D	L	LFAJB-LFAJB	A-LFAJB-A-LFAJB			
1.4	1.5	3.4	40	4	13	(D _{m5}) LFAJB	8	70~(130)	Quotation	L≤100	100<L≤130	L≤100	100<L≤130
1.7	1.8	15				10							
		18				13							
2.7	2.8	4.4	50	5	21	(D ^{+0.005}) LFAJB	16	80~(130)	Quotation	L≤100	100<L≤130	L≤100	100<L≤130
		21				16							
		25				20							
		30				25							
		30				25							

For LFAJB-A-LFAJB, max. L is 100. Details of jector pins P.239

Jector pin diameter	d1 (hole dia.)	d2	d3	S	M	Catalog No.		Base unit price 1~9 pieces					
						Type	D	L	MJB	A-MJB			
0.65	0.7	2.6	1.0	20	3	(D _{m5}) MJB	6	(40)~80	Quotation	L≤100	100<L≤130	L≤100	100<L≤130
1.0	1.1	3.4					8						
1.4	1.5	4.4					10						
1.7	1.8	4.4	1.5	28	5	(D ^{+0.005}) A-MJB	13	(40)~100	Quotation	L≤100	100<L≤130	L≤100	100<L≤130
							16						
							20						
							25						
2.7	2.8	4.4	1.5	36	6	(D ^{+0.005}) A-MJB	20	(40)~100	Quotation	L≤100	100<L≤130	L≤100	100<L≤130
							25						
							30						
							30						
							30						

L(40)→φD 6~13=S15 L(50)→φD 16~25=S24 φD 16~25=S17 Details of jector pins P.239

Jector pin diameter	d1 (hole dia.)	d2	d3	S	M	H	Catalog No.		Base unit price 1~9 pieces					
							Type	D	L	AHJB-C	AHJB-C			
1.7	1.8	4.4	1.5	28	5	15	(D _{m5}) AHJB-C	10	(60)~100	Quotation	L≤100	100<L≤130	L≤100	100<L≤130
							18							
							21							
2.7	2.8	4.4	1.5	36	5	21	Spring and pin reinforced type AHJB-C	16	(60)~100	Quotation	L≤100	100<L≤130	L≤100	100<L≤130
							25							
							30							
							30							
3.0	3.1	4.4	1.5	36	5	30	Spring and pin reinforced type AHJB-C	20	(60)~100	Quotation	L≤100	100<L≤130	L≤100	100<L≤130
							25							

L(60)→S=24 Details of jector pins P.239



Order

Catalog No. - L
MPB 10 - 90



Days to Ship

Quotation



Price

Quotation