

NEW

SCREW REMOVER FOR SODICK INJECTION MOLDING MACHINE

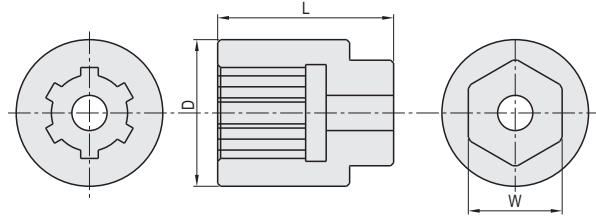
SCREW REMOVER

DEDICATED FOR SODICK INJECTION MOLDING MACHINE



■ Application Use to remove the injection screw of Injection Molding Machine manufactured by Sodick.

RoHS10 M-SSJ



Standardized under the supervision of Sodick Co., Ltd.

M Material SCM435 tempering
S Surface treatment Black oxide

Applicable screw dia.	W	D	L	Part Number		Unit Price
				Type	No.	1~3 pcs
14/18	24	35	50	M-SSJ	14-18	Quotation
22		40	55		22	
25		45			25	
28/32	32	50	60		28-32	
40		58	75		40	
50		36	58		75	



Order

Part Number

M-SSJ-14-18
M-SSJ-50



Days to Ship

Quotation

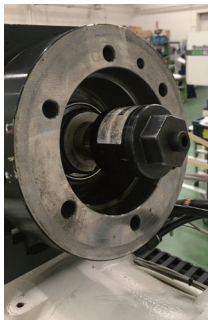


Price

Quotation



Example



- Insert the jig into the screw spline and lightly tighten it with bolts.
- Pull out the screw while rotating it with a wrench, etc.

- ⚠ When performing maintenance on the molding machine, check the Sodick's instruction manual and implement appropriate safety measures against burns and electric shock, etc.
- ⚠ Perform the necessary preparations for screw removal, such as removing the plasticizing motor and non-return unit.

INJECTION MOLDING
MACHINE RELATED PRODUCTS