

ROLLER LOCK SETS (NORMAL BUSHINGS/SLIM BUSHINGS)

— STANDARD TYPE/LONG TYPE/HEAT PROOF STANDARD TYPE/HEAT PROOF LONG TYPE —

Ⓜ Non JIS material definition is listed on P.1351 - 1352

Standard Type/Heat Proof Standard Type

RoHS

① Lock holder
② Normal bushing
③ Slim bushing

Lock holder S50C
Lock bushing SK3

Type		Usage temperature
Normal bushing	Slim bushing	Use under temperature 80°C Use under temperature 150°C or lower (heat proof)
MPLK MPLKH	MPLKS MPLKHS	

(Normal bushing) (Slim bushing)

Long Type/Heat Proof Long Type

RoHS

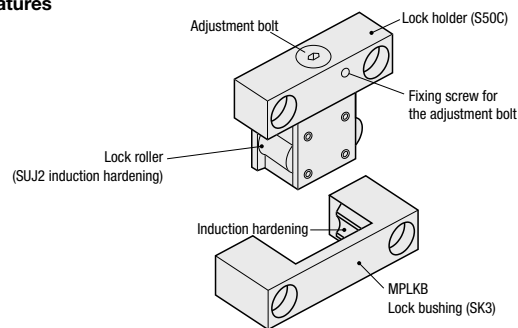
① Lock holder
② Slim bushing
③ Normal bushing

Lock holder S50C
Lock bushing SK3

Type		Usage temperature
Normal bushing	Slim bushing	Use under temperature 80°C Use under temperature 150°C or lower (heat proof)
MPLK MPLKH	MPLKS MPLKHS	

(Normal bushing) (Slim bushing)

Features



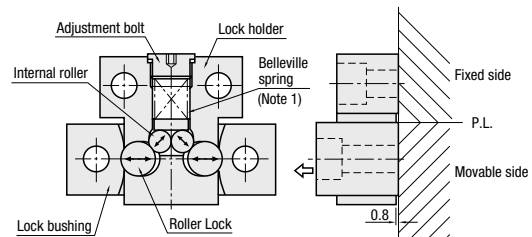
Roller Lock Set Features

- Enables well-balanced mold opening/closing through its mechanism composed of a Belleville spring, internal rollers and lock rollers.
 - Its rollers prevent uneven wear.
 - The lock bushing's vertically symmetrical design allows a worn piece to be reused by reinstalling it in reverse.
 - The lock holder's back recess enables it to be used even on a stepped mold plates.
 - For heat proof type, the adjusting bolt differs from standard type for identification.
- (Standard type: black oxide Heat proof type: Trivalent Chromate)

Load Adjustment and Load Characteristics

- Opening/closing load can be adjusted using an Allen wrench. The load is maximum when the adjustment bolt is fully tightened, 50% when it is loosened a half rotation, 0 when it is loosened 1 rotation or more. ※ For MPLK10, the load decreases about 25% when the adjustment bolt is loosened a half rotation, 70% when it is loosened one rotation.
 - The load for mold closing is about 50% of mold opening.
 - A fixing screw is provided on the load adjustment bolt. Loosen it to perform load adjustment, and make sure to tighten it after adjustment is completed.
- Note: Make sure to assemble the right and left units symmetrically for well balanced operation.

Structure and Usage



(Note 1) Coil spring for MPLK10.

- Mount it in parallel to the parting line.
- The roller lock set can be removed by pulling it in the direction of arrow in the figure.

Standard Type · Heat Proof Standard Type (①+② sets)

Part Number	Max. usable load (2 sets under normal temp)	L	L1	L2	T	H	H1	J	K	P	P1	P2	A	A1	t	t1	d	d1	A	U/Price for 1~9 sets				
																				2 pcs. each	MPLK · MPLKS	MPLKH · MPLKHS		
(Normal bushing) MPLK	10	981N {100kgf}	48	36	25	42	22	18	2	2	36	24	22	24	16	9.5	18	6.5	11	CB6-20 CB6-30	Quotation			
	20	1961N {200kgf}	54	42							40	28			9	16			CB6-20 CB6-25					
(Normal bushing) MPLK MPLKH	30	2942N {300kgf}	65	46		48.5				50	31		26					6.5		CB6-30 CB6-35				
	60	5884N {600kgf}	73	50		56.5	25	20	3.5		52	33		34	19.5	17		14	9	CB8-30 CB8-35				
	*80S	7845N {800kgf}								11.5														
(Slim bushing) MPLKS MPLKHS	100	9807N {1000kgf}	103	65	48	58	30	24	4	4	76	42	31	34	25	13	19	17	11	CB10-30 CB10-35				
	30	2942N {300kgf}	65	46		48.5				50	31		26					11	7	CB6-25 CB6-30				
	60	5884N {600kgf}	73	50		56.5	25	20	3.5		52	33		34	24	19	9.5	15.5	14	9		CB8-25 CB8-30		
*80S	7845N {800kgf}								11.5															

* T dimensions of MPLK80S and MPLKS80S are 56.5, and K dimensions of them are 11.5.

Long Type · Heat Proof Long Type (①+② sets)

Part Number	Max. usable load (2 sets under normal temp)	L	L1	L2	T	H	H1	J	K	P	P1	P2	A	A1	t	t1	d	d1	A	U/Price for 1~9 sets				
																				2 pcs. each	MPLK · MPLKS	MPLKH · MPLKHS		
(Normal bushing) MPLK MPLKH	60L	5884N {600kgf}	73	50	35	79.5	25	20	3.5		52	33		57	27	19	9.5	17	14	9	CB8-30 CB8-35	Quotation		
	80	7845N {800kgf}				87.5							65											
	100L	9807N {1000kgf}	103	65	48	89	30	24	4	35	76	42	62	34	25	13	19	17	11	CB10-30 CB10-35				
(Slim bushing) MPLKS MPLKHS	80	7845N {800kgf}	73	50	35	87.5	25	20	3.5	42.5	52	33	65	24	19	9.5	15.5	14	9	CB8-25 CB8-30				

Lock Bushing Component (② only) (Common with Heat Proof Type)

Part Number	Application	U/Price		
		Type	No.	1~9
MPLKB (Normal bushing)	10	For MPLK(H)10	Quotation	
	20	For MPLK(H)20		
	30	For MPLK(H)30 For MPLK(H)S30		
	6080	For MPLK(H)60 · 80 · 60L · 80S For MPLK(H)S60 · 80 · 80S		
	100	For MPLK(H)100 · 100L		
MPLKSB (Slim bushing)	30	For MPLK(H) S30 For MPLK(H) 30	Quotation	
	6080	For MPLK(H) 60 · 80 · 80S For MPLK(H) S60 · 80 · 80S		

※ For use in 2-color molding, insert molding, etc. that require additional lock bushings.



Order

Part Number
MPLK60
MPLKH80S
MPLKS30
MPLKB6080



Days to Ship

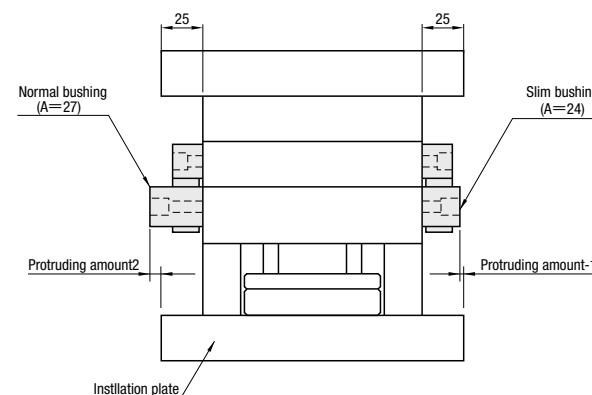
Quotation



Price

Quotation

Comparison of Normal Bushing and Slim Bushing



About slim bushings

- For roller lock set slim bushings, the height of lock bushing (A dimension) is protruded as 24mm. The one side of molding base installation board is a standard corresponding to the amount of protrude 25mm.
- When mold is installed in the molding machine, the part where roller lock set protrudes interferes in the tie bar. It becomes the damage prevention of roller lock set and the tie bar. Moreover, there is no trouble in keeping and transporting.
- Although the heights of bushings (A→24, t1→15.5) become lower, the load and other dimensions remain the same as conventional products.