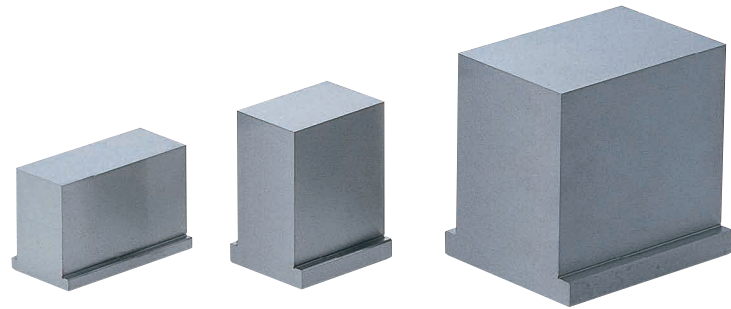


SLIDE CORES

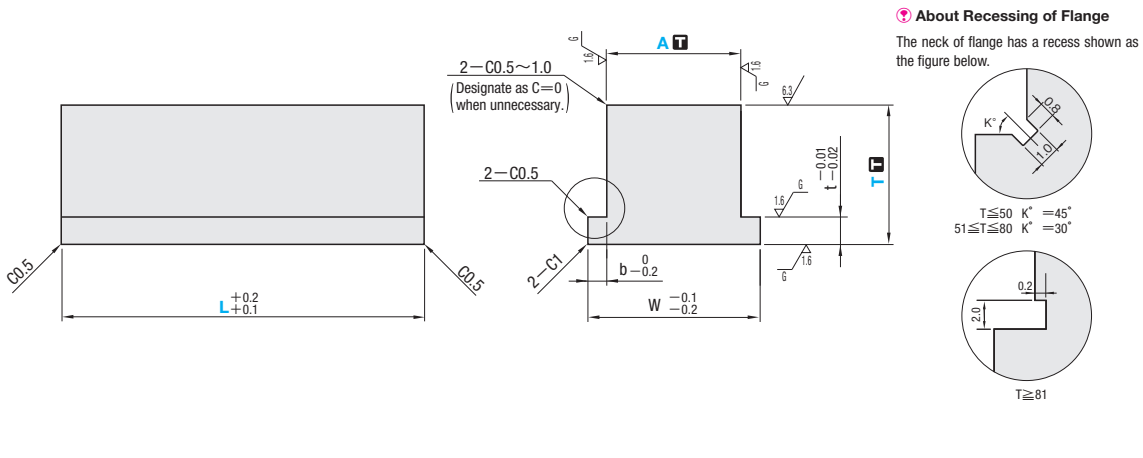
—STANDARD TYPE / FREE DESIGNATION TYPE—

ⓘ Non JIS material definition is listed on P.1351 - 1352



RoHS

Part Number		M	H	Flange thickness t	Flange width W	One side of flange b	A dimension	T dimension
Standard type	Free designation type							
SLG5K	SLF5K	NAK55	Prehardened steel 37~43HRC	t=5	W=A+6	b=3	0 -0.01	+0.1 +0.05
SLG5A	SLF5A	NAK80						
SLG8K	SLF8K	NAK55		t=8	W=A+8	b=4		
SLG8A	SLF8A	NAK80						



Order

Part Number — A — T — L — (When C is unnecessary)
SLF8A — A60 — T48 — L85 — C0



Alterations

Part Number — A — T — L — (TC · TKC · HC)
SLF8A — A35 — T40 — L55 — TC6



Days to Ship

Quotation



Price

Quotation

Alterations	Code	Spec.	1Code
	TC	Reduces the flange thickness. TC=1mm increments TC≥(Flange thickness-2) (Dimension T remains unchanged.)	Quotation
	HC	Reduces the flange width. HC=1mm increments Standard size (W) > HC ≥ (A+3)	

Standard A · T dimension selection type

Part Number	A	T	L	
			1mm increments	
Flange thickness 5mm SLG5K (NAK55) SLG5A (NAK80)	20	15 20	20~ 60	
	25	25		
	30	20 25		30
		30		
	40	20 25 30		20~ 80
	50	20 25 30		
60	25 30	20~120		
35				
Flange thickness 8mm SLG8K (NAK55) SLG8A (NAK80)	30	25 30	20~ 80	
	40	30		35 40
		45 50		
	50	35 40		20~100
	45 50			
	60	45 50		30~120
55				

Free designation type

Part Number	1mm increments		
	A	T	L
Flange thickness 5mm SLF5K (NAK55) SLF5A (NAK80)	10~ 14	10~ 30	10~100
	15~ 30	10~ 60	10~120
	31~ 40	10~ 60	10~160
		61~ 80	60~160
	41~ 50	10~ 60	10~180
		61~ 80	60~180
	51~ 60	81~100	80~180
		10~ 60	10~180
	61~ 80	61~ 80	60~180
		81~100	80~180
	81~100	101~120	100~180
		15~ 60	10~180
	101~180	61~ 80	60~180
		81~100	80~180
	101~180	20~ 80	60~180
		81~100	80~180
	101~180	101~120	100~180
		30~ 80	60~180
101~180	81~100	80~180	
	101~120	100~180	

Part Number	1mm increments		
	A	T	L
Flange thickness 8mm SLF8K (NAK55) SLF8A (NAK80)	30~ 40	15~ 60	20~160
	41~ 50	61~ 80	60~160
		15~ 60	20~180
	51~ 80	61~ 80	60~180
		81~100	80~180
	81~100	15~ 60	30~180
		61~ 80	60~180
	101~180	81~100	80~180
		101~120	100~180
	101~180	20~ 60	30~180
		61~ 80	60~180
	101~180	81~100	80~180
		101~120	100~180
	101~180	30~ 80	60~180
		81~100	80~180
	101~180	101~120	100~180
		101~120	100~180