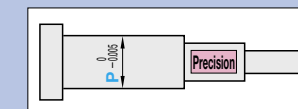


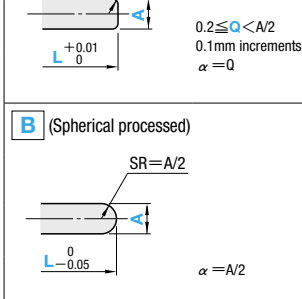
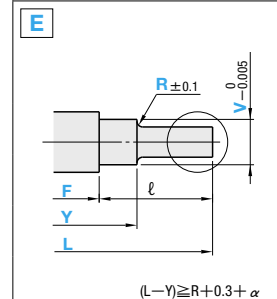
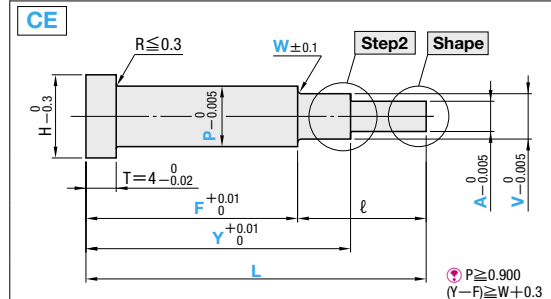
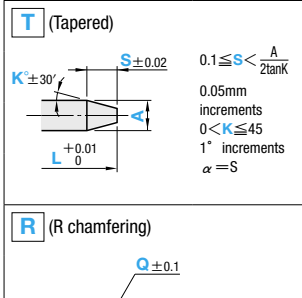
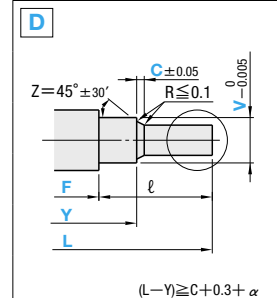
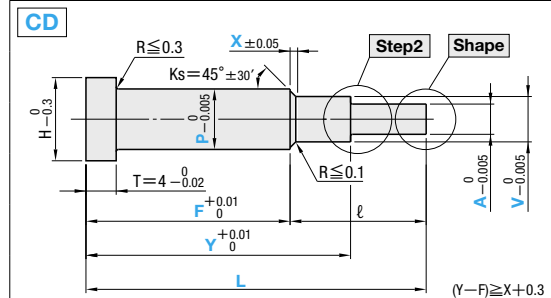
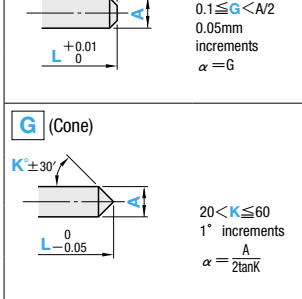
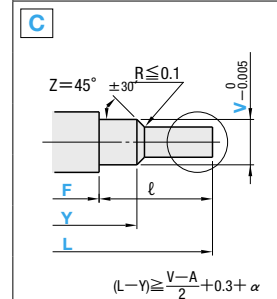
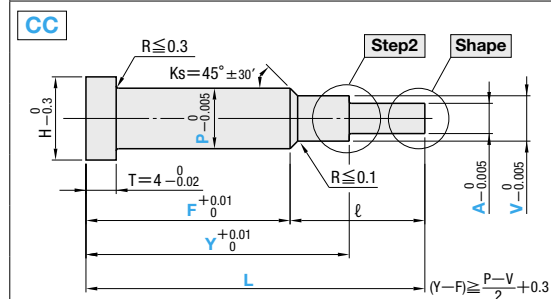
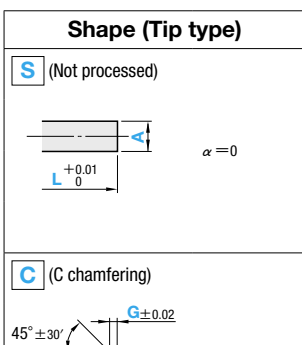
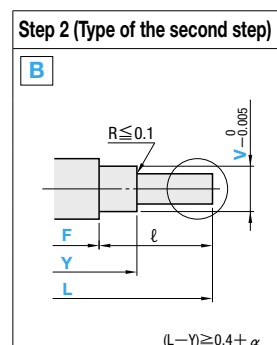
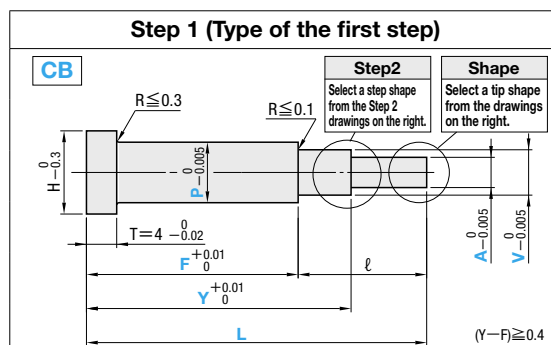
# PRECISION TAPERLESS TWO-STEP CORE PINS (NO DRAFT ANGLE CORE PINS)

—SHAFT DIAMETER (P) 0.005mm DESIGNATION TYPE—



Ⓢ Non JIS material definition is listed on P.1351 - 1352

RoHS	Part Number				
	Step1	Material code	M H	Step2	Shape
	CB	SZB	SKD61 equivalent 48~52HRC	B	S
	CC	SVB	SKH51 equivalent 58~60HRC	C	G
	CD			D	T
	CE			E	R



H	Part Number		0.01mm increments		0.05mm increments		0.01mm increments		0.1mm increments				lmax.				
	Step1	Material	Step2	Shape	No.	min.	max.	F	Y	V	A min.	A max.		X	W	C	R
3					1.5		1.000~1.495				0.50						
4					2	100.00	1.500~1.995				0.70						
5				S	2.5		2.000~2.495				1.00						
6					3		2.500~2.995				1.00						
7	CB		B	C	3.5	120.00	3.000~3.495				1.50						
8	CC	SZB	C	G	4.5		3.500~3.995				1.50						
9	CD	SVB	D	T	5	14.00	4.000~4.495				1.50						
10					5.5		4.500~4.995				1.50						
11					6		5.000~5.495				1.50						
15					6.5		5.500~5.995				1.50						
18					7		6.000~6.495				1.50						
21					8		6.500~6.995				1.50						
25					10		8.000~9.995				1.50						
					13		10.000~12.995				2.00						
					16		13.000~15.995				2.00						
					20	30.00	16.000~19.995				5.00						

Order

Part Number	L	P	F	Y	V	A	X	W	C	R	Tip size (K·S·G·Q)
CBSZBBS 3.5	40.00	P3.310	F20.50	Y31.00	V2.80	A2.50					G0.5
CCSVBCC 5	52.05	P4.655	F35.68	Y44.00	V3.85	A3.35					G0.5
CDSZBDG 6	58.42	P5.885	F42.00	Y49.00	V4.30	A2.00	X0.5	C0.5			K30
CESVBET 5.5	60.50	P5.330	F40.10	Y51.00	V4.60	A3.30	W0.2	R0.3			K30-S1.0

Days to Ship

Alterations

Quotation

Price

Quotation

Part Number	L	P	F(FC)	Y	V	A	X	W	C	R	Tip size (K·S·G·Q)	(KC·WKC...etc.)
CBSVBDS6	88.50	P5.810	F65.00	Y80.00	V4.50	A3.50					C0.3	WKC3.0

Alteration details P.495

Alterations	Code	Spec.	1Code
	KC	Single flat cutting P/2 ≤ KC < H/2	
	WKC	Two flats cutting P/2 ≤ WKC < H/2	
	KAC KBC	Varied width parallel flats cutting P/2 ≤ KAC < H/2 KBC = 0.1mm increments only KAC < KBC < H/2	
	RKC	Two flats (right angled) cutting P/2 ≤ RKC < H/2	
	DKC	Three flats cutting P/2 ≤ DKC < H/2	
	SKC	Four flats cutting P/2 ≤ SKC < H/2	
	KGC	Two flats (angled) cutting P/2 ≤ KGC < H/2 0 < AG < 360 AG = 1° increments	
	KTC	Three flats cutting at 120° P/2 ≤ KTC < H/2	
	HC	Head diameter change HC = 0.1mm increments P ≤ HC < H In relation to the diameter tolerance, alteration may create a straight piece with little diameter difference between the head and shaft.	
	HCC	Head diameter change (precision) HCC = 0.1mm increments P + 0.5 ≤ HCC < H - 0.3	
	TC	Head thickness change TC = 0.1mm increments 1.5 ≤ TC < 4 (Dimensions L, Y, and F remain unchanged) 4 - TC ≤ Lmax. - L	
	TRN	Relief under the head (Makes plate chamfering unnecessary)	
	NHC	Numbering on the head How to order P.496 Combination with SKC not available. Available when H ≥ 2	
	AC	Changes the standard angle (Ks = 45°). AC = 1° increments 30 ≤ AC ≤ 60 Available for [Step1] CC · CD When [Step1] CC, Y - F ≥ (P - V) / 2 tan AC + 0.3 When [Step1] CD, V + 2(X tan AC) < P	
	QC	Changes R (normally ≤ 0.1) to R ≤ 0.05. Available for [Step1] CB Designation method QC	Quotation
	RC	Changes R (normally ≤ 0.1) to R ≤ 0.05. Available for [Step2] B Designation method RC	Quotation
	AGC	Changes the standard angle (Z = 45°). 30 ≤ AGC ≤ 60 Available for [Step2] C · D When [Step2] D, A + 2(C tan AGC) < V	
	FC	F dimension becomes shorter than F min, and L dimension becomes shorter than L min. FC ≥ 5mm It can be designated up to L min. = 6.5mm.	
	GVC	Gas vent machining GS · GB = 1mm increments Available when P ≥ 2.000 2 ≤ GS ≤ 10 GS + 2 ≤ GB ≤ 30 F min. ≤ F - GB How to order P.496	

Taperless  
Core Pins  
Precision