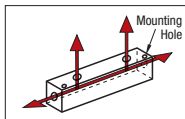
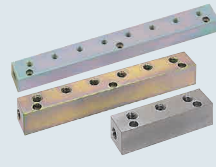


Manifold Blocks (Hydraulic)

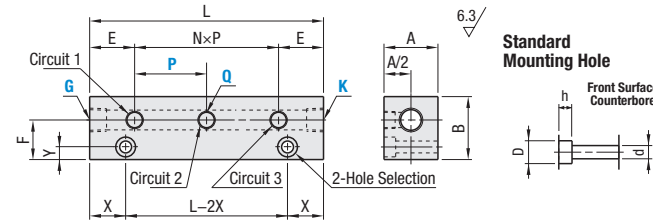


Manifold Blocks – Hydraulic



RoHS 10

Pitch (P) Standard		Type			Pitch (P) Configurable			Material	Surface Treatment	Normal Pressure
25 x 32 Sq	30 x 35 Sq	50 Sq	60 Sq	25 x 32 Sq	30 x 35 Sq	50 Sq				
BMSB	BMBF	BMBFL	BMBL	BMBSP	BMBFP	BMBFLP	General Structural Steel	Trivalent Chromate Electroless Nickel Plating	20.6 MPa = 210 kgf/cm ² or Less	
—	BMBFM	BMBFLM	—	—	BMBFMP	BMBFLMP				
BMSBR	BMBFR	BMBFLR	—	BMSRP	BMBFRP	BMBFLRP	304 Stainless Steel	—	1 MPa = 10 kgf/cm ² or Less	
—	BMBFS	—	—	—	BMBFSP	—	316 Stainless Steel			
—	BMBFC	—	—	—	—	—	Brass	—	—	

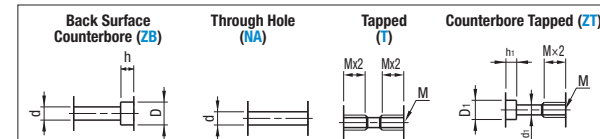


Mounting Holes Dimension	d	D	h	D ₁	d ₁	h ₁
M5	5.5	9.5	5.5	8	4.2	4.5
M6	6.6	11	6.5	9.5	5.1	5.5
M8	8.5	14	8.5	11	6.8	6.5

* Only 304 Stainless Steel d₁ dimension is 4.3.

Thread
JIS B0203 R (PT)
JIS B0202 G (PF): ISO 228-1 Compatible
ANSI / ASME B.1.20.1-1983 (NPT)

Mounting Hole Options



*Drawing is for when 3-Circuit type is selected. The total number of Q, G and K threads is 5.
 ① Port 1 dimension of 30 x 35 square is 15.
 ② Mounting hole can be selected.
 ③ Standard hole shape is selected when no hole shape modification is specified.

L Dimension Calculation
In the case of BMBFP3-P35
L = N x P + 2E = (Number of Ports 3-1) x 35 + 2 x 25 = 120

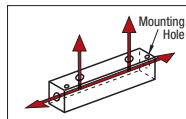
Part Number		Rc (PT), NPT		Pitch P		No. of Pitches N	Q, G & K Total No. of Threads	A	B	E	F	X	Y	Mounting Hole M
Type	Mounting Hole Change	Q	G / K	Standard	Configurable 1 mm Inc.									
Pitch Standard BMSB BMSBR	ZB (Back Surface Counterbore)	1	1 (1/8)	2 (1/4)	30	20-50	3	25	32	20	20	15	6	M5
		2												
		3												
		4												
		5												
		6												
		7												
		8												
Pitch Standard BMBF BMBFR BMBFS	NA (Through)	1	2 (1/4)	3 (3/8)	40	25-50	3	30	35	25	22	20	7	M6
		2												
		3												
		4												
		5												
		6												
		7												
		8												
Pitch Standard BMBFL BMBFLM BMBFLR	T (Tapped)	1	2 (1/4)	3 (3/8)	60	35-60	3	50	50	30	28	20	8	M8
		2												
		3												
		4												
		5												
		6												
		7												
		8												
Pitch Standard BMBL	ZT (Counterbore Tapped)	1	8 (1)	8 (1)	60	—	3	60	60	40	35	25	9	M8
		2												
		3												
		4												

- ① For G (PF) Thread please place an order specified with G- before part number. (Ex: G-BMBF) For ordering, see the Ordering Example.
- ② For Q, G and K, specify 1, 2, 3, 4, 6, 8, 1N, 2N, 3N or 4N indicated before ().
- ③ Single Circuit is not available for Pitch Configurable Type.
- ④ 316 Stainless Steel and Brass is up to 6 connections.
- ⑤ Specify the pitch taking into consideration the necessary dimensions for fitting the couplings.
- ⑥ Each 6 and 8 Circuit Type has an additional mounting hole at the midpoint of the overall length. 7 Circuit Type has an additional mounting hole at each midpoint from the left, 2 and 3 port pitch, and 5 and 6 port pitch.

Part Number Example		Part Number			Part Number				
Type	Mounting Hole Options	No. of Circuits	Q	G	K	P			
BMBF		3	Q3	G4	K2	P			
BMBFLP	NA	3	Q3	G4	K6	P45			
G-BMBFLP	NA	3	Q3	G4	K6	P45 (G Thread)			

Circuits	Available Types																			
	25 x 32 SQ.				30 x 35 SQ.				50 SQ.				60 SQ.							
	BMSB	BMSBR	BMBF	BMBFM	BMBFR	BMBFS	BMBFC	BMBFL	BMBFLM	BMBFLR	BMBL	BMBSP	BMBSRP	BMBFP	BMBFMP	BMBFRP	BMBFSP	BMBFLP	BMBFLMP	BMBFLRP
1	•	•	•	•	•	•	•	•	•	•	•	•	•	•	•	•	•	•	•	•
2	•	•	•	•	•	•	•	•	•	•	•	•	•	•	•	•	•	•	•	•
3	•	•	•	•	•	•	•	•	•	•	•	•	•	•	•	•	•	•	•	•
4	•	•	•	•	•	•	•	•	•	•	•	•	•	•	•	•	•	•	•	•
5	•	•	•	•	•	•	•	•	•	•	•	•	•	•	•	•	•	•	•	•
6	•	•	•	•	•	•	•	•	•	•	•	•	•	•	•	•	•	•	•	•
7	•	•	•	•	•	•	•	•	•	•	•	•	•	•	•	•	•	•	•	•
8	•	•	•	•	•	•	•	•	•	•	•	•	•	•	•	•	•	•	•	•

Manifold Blocks (Pneumatic)

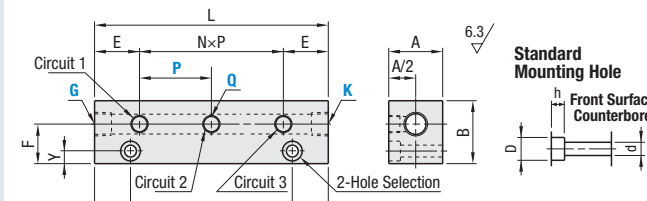


Manifold Blocks – Pneumatic



RoHS 10

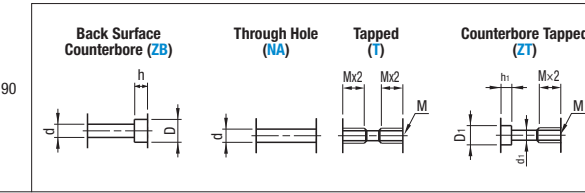
Pitch (P) Standard		Type			Pitch (P) Configurable			Material	Surface Treatment	Max. Operating Pressure
20 Sq	30 Sq	40 Sq	60 Sq	20 Sq	30 Sq	40 Sq				
BMSFC	BMSF	BMSFL	BMSFB	BMSFCP	BMSFP	BMSFLP	Aluminum Alloy	Clear Anodize	1 MPa = 10 kgf/cm ² or Less	
BMSFCA	BMSFA	BMSFLA	—	BMSFCAP	BMSFAP	BMSFLAP				



Mounting Holes Dimension	d	D	h	D ₁	d ₁	h ₁
M5	5.5	9.5	5.5	8	4.2	4.5
M6	6.6	11	6.5	9.5	5.1	5.5
M8	8.5	14	8.5	11	6.8	6.5

Thread
JIS B0203 R (PT)
JIS B0202 G (PF): ISO 228-1 Compatible
ANSI / ASME B.1.20.1-1983 (NPT)

Mounting Hole Options



* Drawing is for when 3-Circuit type is selected. The total number of Q, G and K threads is 5.
 ① Mounting hole can be selected.
 ② Standard hole shape is selected when no hole shape modification is specified. Note that the default of 20 Square is Through Hole.

L Dimension Calculation
In the case of BMSFCP3---P35
L = NXP + 2E = (Number of Circuits 3-1) x 25 + 2 x 20 = 90

Part Number		Rc(PT), NPT, M (Coarse)		Pitch P		No. of Pitches N	Total No. of Q, G & K Threads	A	B	E	F	X	Y	Mounting Hole M
Type	Mounting Hole Change	Q	G / K	Standard	Configurable 1 mm Inc.									
Pitch Standard BMSFC BMSFCA	T (Tapped)	1	1 (1/8) M3 (M3) M4 (M4) 5 (M5)	15	15-50	0	3	20	20	20	13	5	4	M5
		2												
		3												
		4												
		5												
		6												
		7												
		8												
Pitch Standard BMSF BMSFA	ZB (Back Surface Counterbore)	1	1 (1/8) 2 (1/4) 5 (M5)* 1N (NPT 1/8) 2N (NPT 1/4)	30	20-50	0	3	30	30	20	20	7.5	7	M5
		2												
		3												
		4												
		5												
		6												
		7												
		8												
Pitch Standard BMSFL BMSFLA	T (Tapped)	1	2 (1/4) 3 (3/8) 4 (1/2)	40	35-60	0	3	40	40	25	25	7	7	M6
		2												
		3												
		4												
		5												
		6												
		7												
		8												
Pitch Standard BMSFB	ZT (Counterbore Tapped)	1	6 (3/4) 8 (1)	60	—	0	3	60	60	40	35	25	9	M8
		2												
		3												
		4												
		5												
		6												
		7												
		8												

- ① BMSFB is not available with 5, 6, 7, and 8 Circuits.
- ② BMSFCP, BMSFCAP, BMSFP, BMSFAP, BMSFLP, and BMSFLAP are not available with a Single Circuit (1).
- ③ For G (PF) Thread please place an order specified with G- before part number. (Ex: G-BMBF) For ordering, see the Ordering Example.
- ④ For Q, G and K, specify 1, 2, 3, 4, 5, 6, 8, M3, M4, 1N, or 2N indicated before ().
- ⑤ Single Circuit is not available for Pitch Configurable Type.
- ⑥ Specify the pitch taking into consideration the necessary dimensions for fitting the couplings.
- ⑦ Each 6 and 8 Circuit Type has an additional mounting hole at the midpoint of the overall length. 7 Circuit Type has an additional mounting hole at each midpoint from the left, 2 and 3 port pitch, and 5 and 6 port pitch. (Except for 20 Square)
- ⑧ When * marked 30 Square for 7 or 8 is selected, 5(M5) are not available for G and K.
- ⑨ For G and K of 20 Square Pitch Configurable Type, M3 M4 or 5 (M5) are not selectable.

Part Number Example		Part Number			Part Number				
Type	Mounting Hole Options	No. of Circuits	Q	G	K	P			
BMSFLP	T	5	Q2	G1	K2	P			
G-BMSFLP	ZT	5	Q2	G3	K3	P50 (G Thread)			