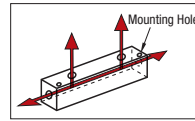


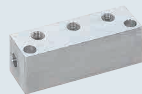
Manifold Blocks (Hydraulic / Pneumatic)



Manifold Blocks – Hydraulic



Manifold Blocks – Pneumatic



Type	Material	Surface Treatment	Max. Operating Pressure
BMBN	General Structural Steel	Trivalent Chromate	20.6 MPa = 210 kgf/cm ² or Less
BMBNR	304 Stainless Steel	—	20.6 MPa = 210 kgf/cm ² or Less
BMSN	Aluminum Alloy	—	1 MPa = 10 kgf/cm ² or Less

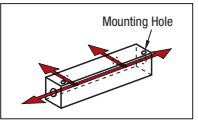
*No. _-55N is for limited space.
 ○ The material of BMSN _-55N is 6063 Aluminum Alloy.

Thread JIS B0203 R (PT)

Type	Part Number		d ₁ Rc (PT)	d ₂ Rc (PT)	A	B	L	P	P ₁	P ₂	E	F	Y	d ₃	d ₄	ℓ	
	No.	No.															
BMBN Oil Hydraulic	2	12	1/8	1/4	30	30	70	30	55	—	20	20	7	9.5	5.5	5.5	
		22	1/4	1/4													
		23	3/8	3/8													
		33	3/8	3/8													
		34	1/2	1/2													
		34	1/2	1/2													
	BMBNR Water Hydraulic	3	12	1/8	1/4	30	35	170	40	130	—	25	22	7	11	6.6	6.5
			22	1/4	1/4												
			23	3/8	3/8												
			33	3/8	3/8												
			34	1/2	1/2												
			34	1/2	1/2												
BMSN Pneumatic	4	11	1/8	1/8	15	15	60	15	50	—	15	10	3.5	—	4.3	—	
		12	1/4	1/4													
		22	1/4	1/4													
		55	M5	M5													
		55N	M5	M5													
		55N	M5	M5													
	4	11	1/8	1/8	15	15	75	15	65	—	15	10	3.5	—	4.3	—	
		12	1/4	1/4													
		22	1/4	1/4													
		55	M5	M5													
		55N	M5	M5													
		55N	M5	M5													
5	11	1/8	1/8	15	15	90	15	80	—	15	10	3.5	—	4.3	—		
	12	1/4	1/4														
	22	1/4	1/4														
	55	M5	M5														
	55N	M5	M5														
	55N	M5	M5														
6	11	1/8	1/8	15	15	105	15	95	—	15	10	3.5	—	4.3	—		
	12	1/4	1/4														
	22	1/4	1/4														
	55	M5	M5														
	55N	M5	M5														
	55N	M5	M5														

Part Number Example: BMBN2-12

Manifold Blocks (Hydraulic / Pneumatic)



Manifold Blocks – Hydraulic



Material: General Structural Steel
 Surface Treatment: Trivalent Chromate

RoHS 10

Manifold Blocks – Pneumatic



Material: Aluminum Alloy

RoHS 10

Type	Part Number		d ₁ Rc (PT)	d ₂ Rc (PT)
	No.	No.		
BMRN Hydraulic	1	22	1/4	1/4
		13	1/8	3/8
		23	1/4	3/8
		33	3/8	3/8
		34	3/8	1/2
		22	1/4	1/4
	2	22	1/4	1/4
		33	3/8	3/8
		34	3/8	1/2
		12	1/8	1/4
		22	1/4	1/4
		23	1/4	3/8
3	22	1/4	1/4	
	33	3/8	3/8	
	34	3/8	1/2	
	12	1/8	1/4	
	22	1/4	1/4	
	23	1/4	3/8	
4	22	1/4	1/4	
	33	3/8	3/8	
	34	3/8	1/2	
	12	1/8	1/4	
	22	1/4	1/4	
	23	1/4	3/8	
5	22	1/4	1/4	
	33	3/8	3/8	
	34	3/8	1/2	
	12	1/8	1/4	
	22	1/4	1/4	
	23	1/4	3/8	
6	22	1/4	1/4	
	33	3/8	3/8	
	34	3/8	1/2	
	12	1/8	1/4	
	22	1/4	1/4	
	23	1/4	3/8	

Type	Part Number		d ₁ Rc (PT)	d ₂ Rc (PT)
	No.	No.		
BMRN Pneumatic	1	11	1/8	1/8
		22	1/4	1/4
		11	1/8	1/8
		12	1/8	1/4
		22	1/4	1/4
		11	1/8	1/8
	2	11	1/8	1/8
		12	1/8	1/4
		22	1/4	1/4
		11	1/8	1/8
		12	1/8	1/4
		22	1/4	1/4
3	11	1/8	1/8	
	12	1/8	1/4	
	22	1/4	1/4	
	11	1/8	1/8	
	12	1/8	1/4	
	22	1/4	1/4	
4	11	1/8	1/8	
	12	1/8	1/4	
	22	1/4	1/4	
	11	1/8	1/8	
	12	1/8	1/4	
	22	1/4	1/4	
5	22	1/4	1/4	
	11	1/8	1/8	
	12	1/8	1/4	
	22	1/4	1/4	
	11	1/8	1/8	
	12	1/8	1/4	
6	22	1/4	1/4	
	11	1/8	1/8	
	12	1/8	1/4	
	22	1/4	1/4	
	11	1/8	1/8	
	12	1/8	1/4	

Part Number Example: BMRN2-33, BMRN3-22