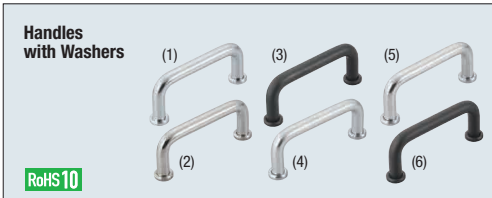
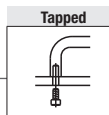
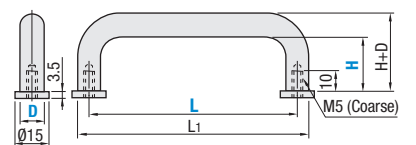


Round Bar Handles / Washers for Handle

with Washer / with Rubber



Type	Material	Surface Treatment
(1) UWANKZ	12L13/12L14 Carbon Steel or Equivalent	Chrome Plating
(2) UWANKZ	12L13/12L14 Carbon Steel or Equivalent	Black Oxide
(3) UWANSZ	304 Stainless Steel	Buffed Surface
(4) UWANAZ	Aluminum Alloy	Buffed Surface
(5) UWANEAZ		Clear Anodize
(6) UWANBZ		Electrostatic Coating (Mat Black)



* Refer to the Washers for Pull Handles below for washer details.

Part Number Type	D	L	H	Washer Selectable	L ₁	Allowable Load (N)
UWANKZ UWANSZ UWANAZ UWANEAZ UWANBZ	10	80	27	G 12L13 Carbon Steel or Equivalent Chrome Plating	90	2500
		100	27		110	
		110	27		120	
		120	27		130	
		125	27		135	
		160	27		170	
	200	27	S 304 Stainless Steel	210		
	250	27		260		
	80	50		B 12L13 Carbon Steel or Equivalent Electrostatic Coating / Black	90	
	100	50			110	
	110	50			120	
	120	50			130	
125	50	135				
160	50	170				
200	50	S 304 Stainless Steel	210			
250	50		260			



Type	Material	Surface Treatment
No Washer	12L13/12L14 Carbon Steel or Equivalent	Buffed Surface
With Washer		Chrome Plating

Rubber-coated handle helps easy grip.

* For details of washers, please refer to the washers for handles below.

Part Number Type	D	L	H	Washers For With Washer Type	L ₁	M	A	T	Allowable Load (N)			
UWANL UWANSL with Washer UWANSLZ with Washer	10	80	27	G 12L13 Carbon Steel or Equivalent Chrome Plating	90	5	50	11.5	2500			
		100	27		110							
		110	27		120							
		120	27		130							
		125	27		135							
		160	27		170							
		200	27		210							
		250	27		260							
		150	40		S 304 Stainless Steel		162			8	120	13.5
		188	40				200					
		238	40				250					
		288	40				300					
	150	75	162									
	188	75	200									
	238	75	250									
	288	75	300									

Part Number Example

Part Number - L - H - Washer Selectable

UWANZ10 - 100 - 50 - G

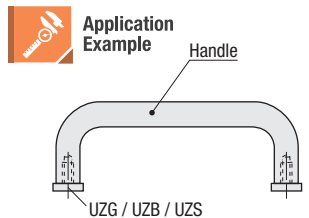
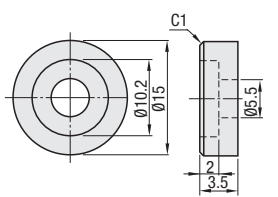
UWANLZ10 - 100 - 27 - G

⊙ D=12 is not available for UWANLZ and UWANSLZ types.



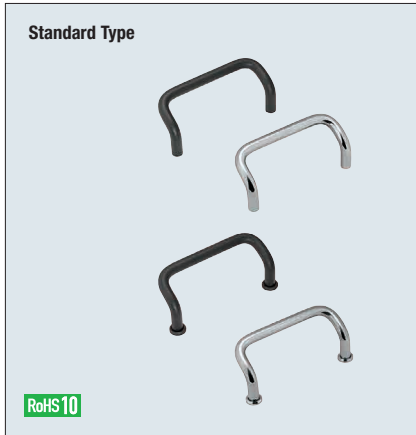
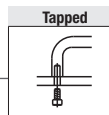
Type	Material	Surface Treatment
UZG	12L14 Carbon Steel or Equivalent	Chrome Plating
UZB	12L14 Carbon Steel or Equivalent	Electrostatic Coating (Mat Black)
UZS	304 Stainless Steel	Barrel Finishing

⊙ Available for round bars of Ø10 only.



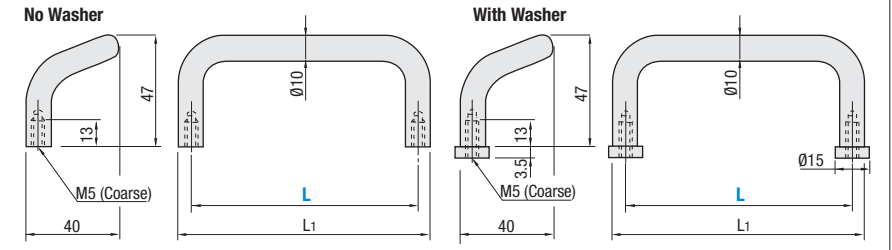
Angled Handles

Standard / Small Diameter Type



Type	Material	Surface Treatment
UHFN	12L13 Carbon Steel	Chrome Plating
UHFNS	304 Stainless Steel	Buffed Surface
UHFNA	Aluminum Alloy	Buffed Surface
UHFNEA		Clear Anodize
UHFNB		Electrostatic Coating (Mat Black)

For single washers, refer to P.3236



No Washer

Part Number Type	L	L ₁	Allowable Load (N)	Reference Mass (g)
UHFN Steel UHFNS Stainless Steel UHFNA Aluminum UHFNEA Aluminum UHFNB Aluminum, Black	48	58	2000	90
	66	76		100
	88	98		114
	100	110		122
	110	120		127
	120	130		134
	125	135		136
	160	170		158

Part Number Example

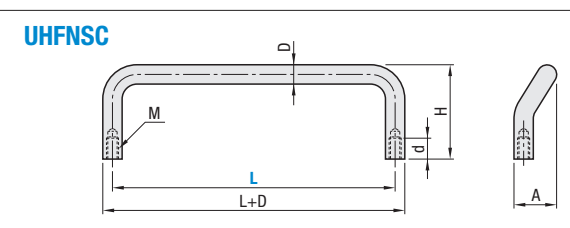
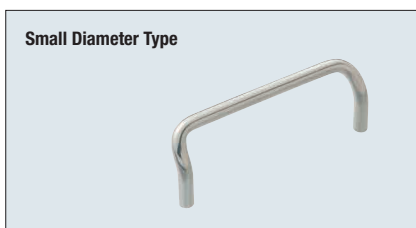
Part Number - Washer Selectable

UHFNG6 - G

UHFNZ100 - G

With Washer

Part Number Type	L	Washer Selectable	L ₁	Allowable Load (N)	Reference Mass (g)	
UHFNZ Steel Stainless UHFNSZ Steel UHFNAZ Aluminum UHFNEAZ Aluminum UHFNBZ Aluminum, Black	48	G 12L13 Carbon Steel or Equivalent Chrome Plating	58	2000	90	
	66		76		100	
	88		98		114	
	100	B 12L13 Carbon Steel or Equivalent Electrostatic Coating / Black	110		122	
	110		120		127	
	120		130		134	
	125		135		136	
	160		S 304 Stainless Steel		170	158



Material	Surface Treatment
304 Stainless Steel	Buffed Surface

Part Number Type	L	D	H	A	D	M	Allowable Load (N)	Reference Mass (g)
UHFNSC	60	6	30	16	7	4	392	23
	80		31.5					28
	100	8	32	18	10	5		54
	120		40					70

Part Number Example

Part Number UHFNSC80