

Casters with Leveling Mounts

Medium Load / Heavy Load

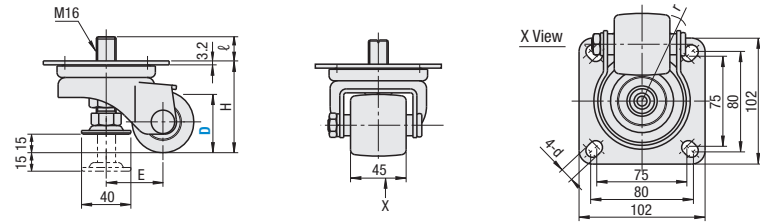


Casters with Leveling Mounts – Medium Load



RoHS10

Type	Body		Wheel Material	Adjuster		Bearings	
	Material	Surface Treatment		Material	Surface Treatment	Swiveling	Wheel
CMAS	Low Carbon Steel	Trivalent Chromate	Reinforced Nylon	1018 Carbon Steel or Equivalent	Trivalent Chromate	Incorporated	Incorporated
CMASS	304 Stainless Steel	—	—	304 Carbon Steel	—	—	—



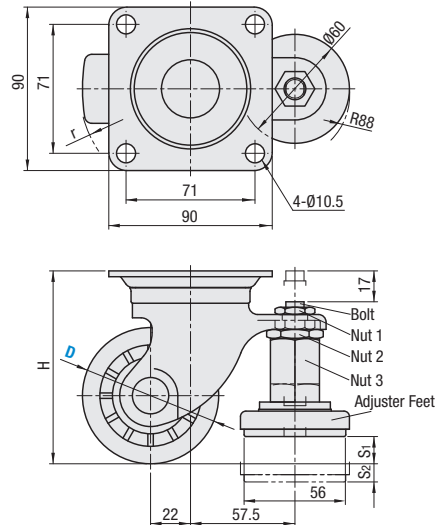
Part Number		Wheel Material	H	F	A ₁	A ₂	K	S ₁	S ₂	M	ℓ	d	t	B	E	r	Allowable Load (N)
Type	D																
CMAS	50	F Reinforced Nylon	74	102	80	75	40	15	15	16	19.6	11	3.2	45	46	70	2500
CMASS	65		95	18.8	51	82											

Casters with Leveling Mounts – Heavy Load

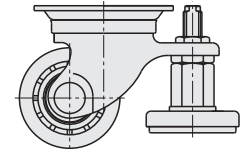


RoHS10

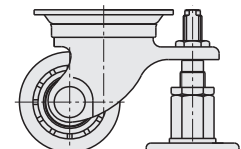
Type	Body		Wheel Material	Adjuster Material	Bearings (Caster)
	Material	Surface Treatment			
CGAN	Low Carbon Steel	Trivalent Chromate	Special Reinforced Plastic MC Nylon *Electrically Conductive MC Nylon	Main Body: 1018 Carbon Steel or Equivalent Rubber: Neoprene Rubber	Incorporated



Adjuster Fixing Process



1. While holding Nut 3, raise the bolt until it comes into contact with the bottom of the equipment body.
2. Fix the bolt with nut 1.



3. Adjust the height of leveling mount with nut 3.
4. Secure the leveling mount with nut 2.

⊕ The integrated structure of caster and adjuster provides excellent durability.

Part Number		Wheel Material	H	S ₁	S ₂	K	r	Allowable Load N
Type	D							
CGAN	65	P Reinforced Plastic	92	10	8	56	3000	
	75	M MC Nylon	106	15	10	61	4000	
		D Conductive MC Nylon						

Part Number Example	Part Number	Wheel Material
CGAN65	-	F
CGAN75	-	P

*Specific Volume Resistivity of Electrically Conductive MC Nylon: 10²~10⁴Ω·cm or Less

Casters with Leveling Mounts

Heavy Load / Large Diameter Wheel

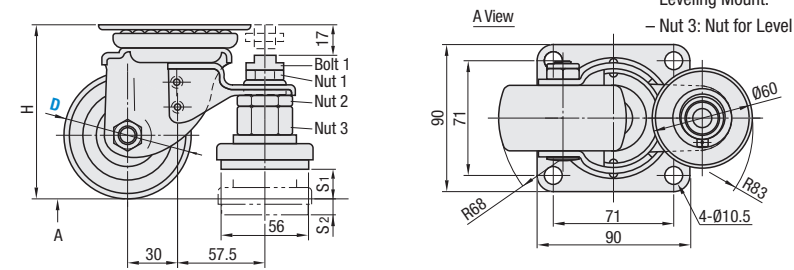


Casters with Leveling Mounts – Heavy Load



RoHS10

Type	Body		Wheel Material	Adjuster Material	Bearings (Caster)
	Material	Surface Treatment			
CLAN	Low Carbon Steel	Trivalent Chromate	Special Reinforced Plastic	Neoprene Rubber	Incorporated
CLAM	—	—	MC Nylon	—	—



Leveling Mount Fixing Process

- Bolt 1: Raise the bolt until it slightly contacts the bottom of the equipment body.
- Nut 2: Nut for Fixing Bolt 1.
- Nut 3: Nut for Level Adjustment.

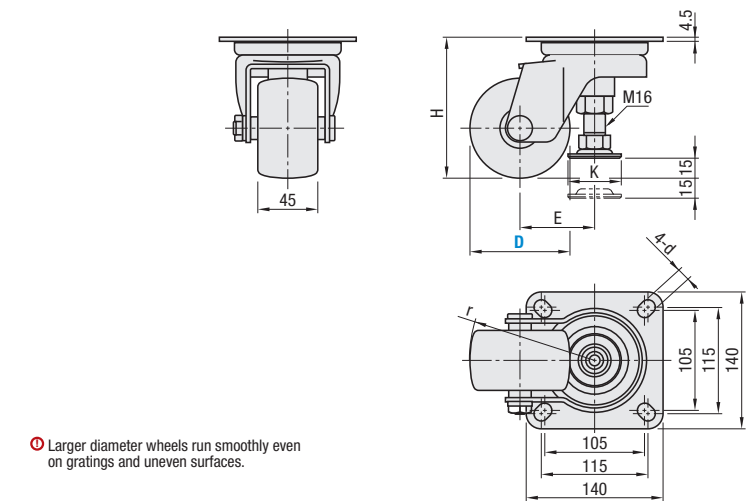
Part Number		H	S ₁	S ₂	Allowable Load N
Type	D				
CLAN	65	92	10	8	2942
CLAM	75	106	15	10	3923

Casters with Leveling Mounts – Large Diameter Wheel



RoHS10

Type	Body		Wheel Material	Adjuster		Bearings	
	Material	Surface Treatment		Material	Surface Treatment	Swiveling	Wheel
CDAN	Low Carbon Steel	Trivalent Chromate	MC Nylon	1018 Carbon Steel	Trivalent Chromate	Incorporated	Incorporated



⊕ Larger diameter wheels run smoothly even on gratings and uneven surfaces.

Part Number		Wheel Material	H	d	E	r	Allowable Load (N)
Type	D						
CDAN	75	M MC Nylon	120	11.5	56	95	3000
	100		145				

Part Number Example	Part Number	Wheel Material
CLAN65	-	M
CDAN75	-	M