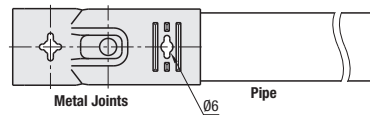


Metal Joints Selection

Metal Joints

(1) A screw hole has been provided to allow the metal joint to be firmly connected to a pipe.

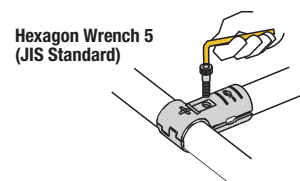


(2) Material and coating is selectable, according to the purpose of use.

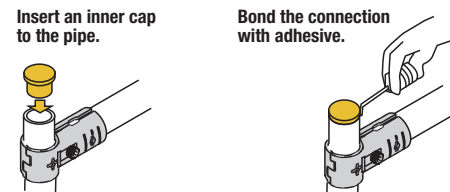
Part Number	Material	Plating
PBLSN, PBLS	Structural Steel	Cathodic Electrodeposition Coating
PBLSNC		Nickel Plating
PBLSNS	304 Stainless Steel	—

How to Use Metal Joints

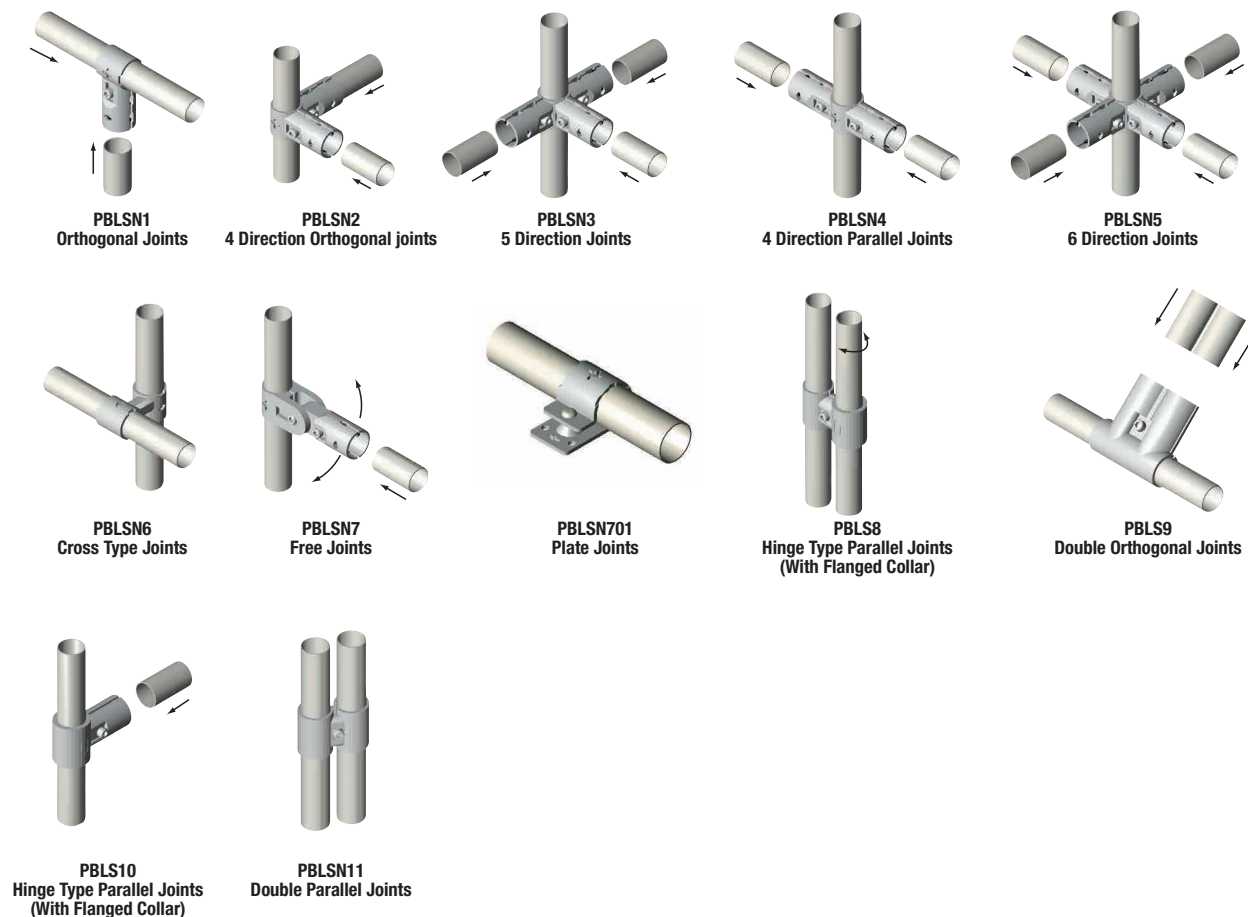
(1) Use hexagon wrench 5 (JIS standard) for tightening.



(2) When using Metal Joints, bond an inner cap (PJ503) to the end of pipe with adhesives. (No inner cap is required for aluminum pipes.)



Metal / Joint Connecting Configurations



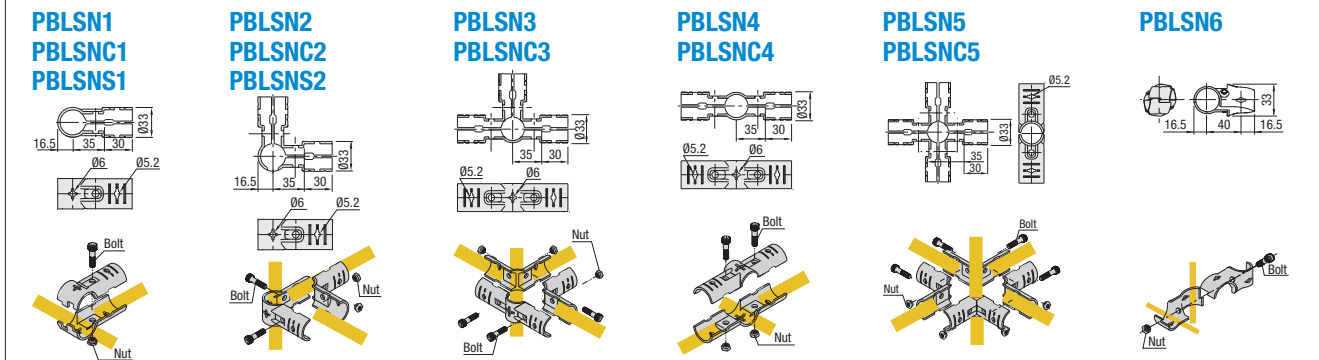
Metal Joints

Metal Joints



Type	Material	Plate Thickness	Surface Treatment
PBLSN_	SAPH	2.6 mm	Cathodic Electrodeposition Coating
PBLSNC_			Nickel Plating
PBLSNS_	304 Stainless Steel		—

RoHS 10



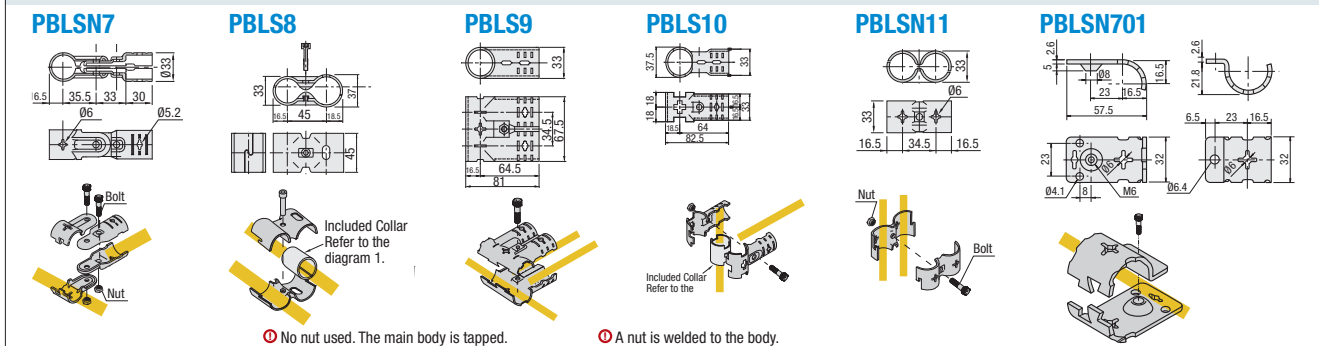
Part Number	Type	No.	Mass (g)	Components (Except Bracket)			
				Screw	Quantity	Nuts	Quantity
PBLSN Cathodic Electrodeposition Coating PBLSNC Nickel Plating PBLSNS Stainless Steel	PBLSN	1	160	M6-25	1	M6	1
		2	250				2
		3	325				3
		4	250				2
		5	400				4
PBLSN Cathodic Electrodeposition Coating	PBLSN	6	150		1		1

Metal Joints



Type	Material	Plate Thickness	Surface Treatment
PBLS_	Structural Steel	2.6 mm	Cathodic Electrodeposition Coating
PBLSN_			

RoHS 10

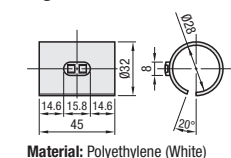


Part Number	Type	No.	Mass (g)	Components (Except Bracket)				
				Boils	Qty.	Nuts	Qty.	Others
PBLSN Cathodic Electrodeposition Coating	PBLSN	7	260	M6-25	2	M6	2	—
		701	80	M6-10	1		0	—
PBLS Cathodic Electrodeposition Coating	PBLSN	8*	200	M6-25	1	M6	0	Included Collar
		9*	289				0	—
		10	186				1	Included Collar
PBLSN	PBLSN	11	165				—	

Use of PBLSN8 and PBLSN10: insert the pipe through the included collar, slide the pipe and the metal joint, then rotate it.



Fig. 1 Included Collar Size



*No nuts included for PBLSN8 and PBLSN9 since there is a tap on the metal bracket.