

Blind Joint Components

Parallel Joint Kits

Features: Extrusions can be connected in parallel. Post assembly additions enabling type is also provided.

Parallel Joint – Pre-Assembly Insertion



Parallel Joint – Post-Assembly Insertion



(Ref.) Corner section when using this joint

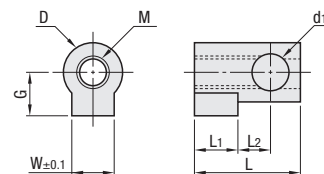


RoHS10

Part Name	Material	Surface Treatment
Pre-Assembly Insertion Parallel Post	CF-8 Stainless Steel Cast	—
Post-Assembly Insertion Parallel Post		
Joint Guide	304 Stainless Steel	Black Oxide
Set Screw	4137 Alloy Steel	

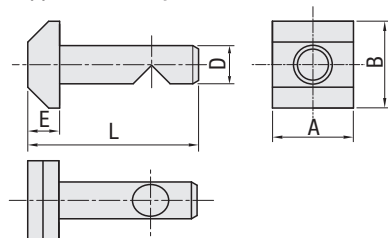
HLJ
Parallel Joint Kits Pre-Assembly Insertion Type
HALJ
Parallel Joint Kits Post-Assembly Insertion Type

Joint Guide (Component (1))

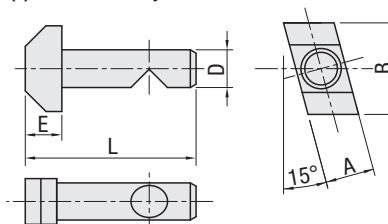


Parallel Joint (Component (2))

(2)-1 Pre-Assembly Insertion Parallel Post



(2)-2 Post-Assembly Insertion Parallel Post



Part Number	Accessory							
	Type	No.	(1) (2) Parallel Post	Qty.	(3) Joint Guide	Qty.	(4) Set Screw	Qty.
HLJ Pre-Assembly Insertion Type	5	5	Pre-Assembly Insertion Parallel Post 5	1	5	1	M4 x 8	1
	6	6	Pre-Assembly Insertion Parallel Post 6		6		M6 x 12	
	8	8	Pre-Assembly Insertion Parallel Post 8		8		M6 x 16	
HALJ Post-Assembly Insertion Type	5	5	Post-Assembly Insertion Parallel Post 5	1	5	1	M4 x 8	1
	6	6	Post-Assembly Insertion Parallel Post 6		6		M6 x 12	
	8	8	Post-Assembly Insertion Parallel Post 8		8		M6 x 16	

Detailed Dimensions of Components Joint Guide (Component (1))

Name of Parts	D	G	W	L	L ₁	L ₂	d ₁	M
Joint Guide 5	6.9	5.5	5.8	13.0	5	4	4.1	4
Joint Guide 6	10.9	8	7.8	19.5	8	6	6.8	6
Joint Guide 8	12.8	9	9.8	28.0	11	7.5	9.9	6

Pre-Assembly Insertion Parallel Post (Component (2)-1)

Name of Parts	D	L	E	A	B
Pre-Assembly Insertion Parallel Post 5	4	20.5	3.5	10	10
Pre-Assembly Insertion Parallel Post 6	6.6	29.5	5.5	14	15
Pre-Assembly Insertion Parallel Post 8	9.8	41	6	17	17

Post-Assembly Insertion Parallel Post (Component (2)-2)

Name of Parts	D	L	E	A	B
Post-Assembly Insertion Parallel Post 5	4	20.5	3.5	6	10
Post-Assembly Insertion Parallel Post 6	6.6	30.4	6.4	8	15
Post-Assembly Insertion Parallel Post 8	9.8	41.4	6.4	10	17

	Part Number Example	Part Number
		HLJ8

Extrusions Applicable to This Joint

Parallel Joint No.	Applicable Extrusion No.				[Exception] Extrusion Not Available
5	5-2020*1	5-2040	5-2060	5-2080	* 1HFSH and HFSC are not applicable since L holes cannot be added.
	5-4040	5-4060	5-4080		
	6-3030*1	6-3060*1	6-3090	6-30120	
6	6-5050	6-50100			* 1HFSH and HFSC are not applicable since L holes cannot be added.
	6-6060	6-6090			
	8-4040*1	8-4080*1	8-40120	8-40160	
8					* 1HFSH and HFSC are not applicable since L holes cannot be added.

Blind Joint Components

Parallel Joint Kits, continued



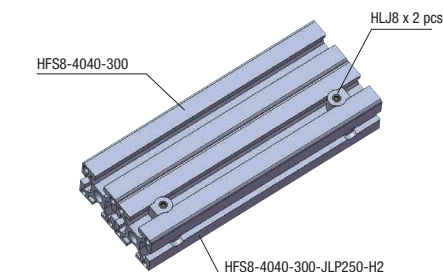
Application Example

Parallel Joint Connection Method

Step	Front View / Side View	Parallel Joint	Explanation
1			Mount parallel post to extrusion (A). (Post-Assembly Insertion Type can be inserted by turning from upside of slot.) Ⓢ Parallel Post is for Standard Type and With Rotation Stopper Type.
2			Insert a Joint Guide into extrusion (B) with L Holes (P.2874). Aligning of holes is not required.
3			Move the plate (A) close to the plate (B) while putting the parallel post through the through hole of joint guide.
4			Tighten the set screw to the side of joint guide.
5			When the set screw is tightened against the V groove on the post, the extrusions (A) and (B) will pull together and be bound.

Part Numbers for the parts shown on the above example.

- Connecting extrusions with two or more slots on one side. Insert joint guide from the both ends of L hole, then connect with two or more parallel joints.
- Connecting extrusions with three or more slots. L holes are added on the outside rows only. Not applicable on rows in the middle.



- As long as interference between each joint does not occur, multiple extrusions can be connected. Use multiple connections when strength is required.

