

# Blind Joint Components

## Simple Joint Kits

Features: Only end tapping is required on extrusions. Simple joints with good workability.

### Blind Joint Components – Simple Joint Kits



(Reference) Corner section when using this joint

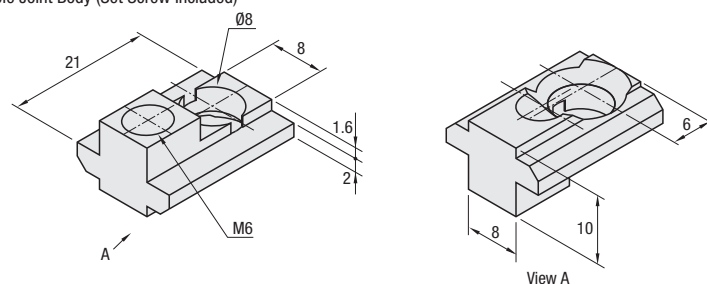


RoHS10

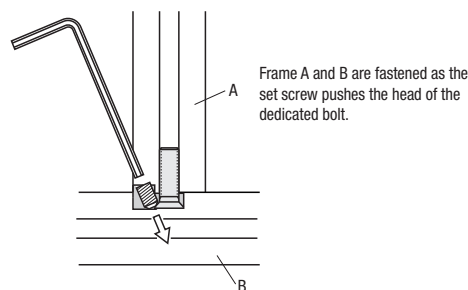
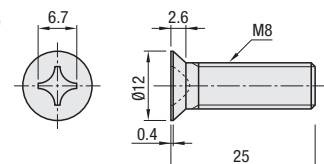
Part Name	Material	Surface Treatment
Body	1045 Carbon Steel or Equivalent	Trivalent Chromate
Dedicated Screws	4137 Alloy Steel	Trivalent Chromate
Set Screw		Black Oxide Film

### HUJ (Simple Joint Kit)

(1) Simple Joint Body (Set Screw Included)



(2) Bolts for Exclusive Use



Part Number Example

Part Number  
HUJ6

Part Number Type	No.	Components	
HUJ	6	(1) Simple Joint Body (Set Screw Included)	(2) Dedicated Screws

Simple Joint	Applicable Extrusion No.			
HUJ6	6-3030	6-3060	6-3090*	6-30120*
	6-5050			
	6-6060			

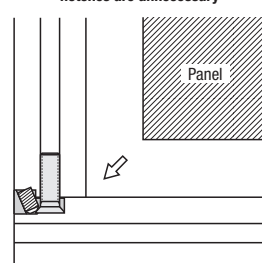
\*Rectangle frame might have less fastening points depending on the direction of fastening. (Refer to the example of using HFS6-3090 on the next page.)



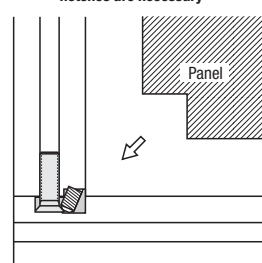
### Application Example

To insert a panel into extrusion slots, notching may be required depending on the direction Simple Joint is mounted.

Example of the case when panel notches are unnecessary



Example of the case when panel notches are necessary



# Blind Joint Components

## Simple Joint Kits, continued



### Application Example

Simple Joint Connection (Connected on the extrusion corner or in the middle)

Step	Side view	Sketch Drawing
1	<p><b>HUJ6</b></p> <p>(1) Simple Joint Body (2) Bolts for Exclusive Use</p> <p>Insert the exclusive bolt (2) into the simple joint main body (1) and install in the tap hole of the extrusion A.</p>	<p>Example of HFS6-6060 Using 4 simple joints</p>
2	<p>Do not tighten bolts too much, or they will not fit into the slot of Extrusion (B).</p>	<p>Enlarged View</p> <p>Loosen the bolt head for a half revolution from the condition of the bolt fully inserted to keep some allowance at X part.</p> <p>Example of HFS6-3090(1) Using three simple joints</p>
3	<p>Insert into the slot of Extrusion (B).</p>	<p>Example of HFS6-3090(2) Two easy joints are used in this example.</p>
4	<p>Hex Wrench</p> <p>Tighten the set screw of Simple Joint Body with a hex wrench and the steps are finished.</p>	