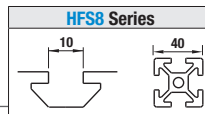


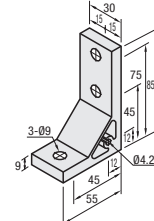
Brackets

Slot Type: HFS8 Series (Aluminum Extrusions 40, 80 Square)



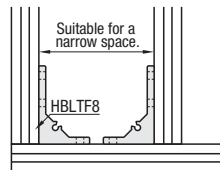
Scalene Brackets

HBLTF8



Type	Material	Surface Treatment
HBLTF8	A6N01SS-T5 Aluminum Alloy	Anodize

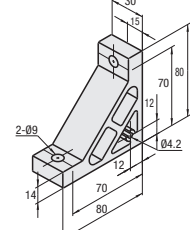
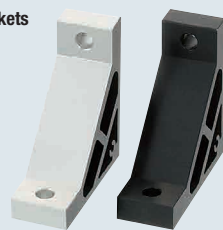
Material: A6N01SS-T5 Aluminum Alloy
Surface Treatment: Anodize



Part Number	Mass (g)	Applicable Screw / T Nut				Allowable Load (N)
		Screw	Qty.	T Nut	Qty.	
HBLTF8	90	CBM8-20	3	HNTT8-8	3	2572

Ultra Thick Brackets

HBLUS8
HBLUSB8
Black Anodize



Type	Material	Surface Treatment
HBLUS8	A6N01SS-T5 Aluminum Alloy	Anodize
HBLUSB8	A6N01SS-T5 Aluminum Alloy	Black Anodize

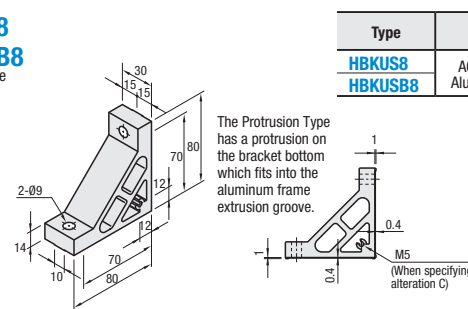
Material: A6N01SS-T5 Aluminum Alloy
Surface Treatment: Anodize

Part Number	Mass (g)	Applicable Screw / T Nut				Allowable Load (N)
		Screw	Qty.	T Nut	Qty.	
HBLUS8 HBLUSB8* Black Anodize	151	CBM8-25	2	HNTT8-8	2	2058

* For repairing black anodizing, refer to P.2965.

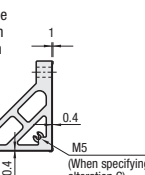
Ultra Thick Brackets (With Tabs)

HBKUS8
HBKUSB8
Black Anodize



Type	Material	Surface Treatment
HBKUS8	A6N01SS-T5 Aluminum Alloy	Anodize
HBKUSB8	A6N01SS-T5 Aluminum Alloy	Black Anodize

The Protrusion Type has a protrusion on the bracket bottom which fits into the aluminum frame extrusion groove.



HBK __ series and HBLDSWT have tabs on the contact surfaces with extrusions.

Part Number	Mass (g)	Applicable Screw / T Nut				Allowable Load (N)
		Screw	Qty.	T Nut	Qty.	
HBKUS8 HBKUSB8* Black	151	CBM8-25	2	HNTT8-8	2	2058

* For repairing black anodizing, refer to P.2965.

Alterations	Code	Spec.	Applicable Brackets
Mounting Holes Alteration for Cover	C	Adds taps on a bracket for cover mounting. (M5 on Both Sides) (Mounting screw P.2861 HCBM)	NBLTS8
			HBLTS8
			CHBLTS8
			HBKTS8
			HBLTH8
			HBLTF8
			HBLUS8
HBLUSB8			

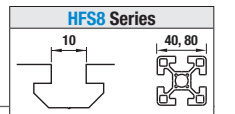
Adds taps on a bracket for cover mounting. (M5 on Both Sides) (Mounting Screw P.2861 HCBM)

Alterations	Code	Spec.	Applicable Brackets
Applicable Screws and Nuts Set	SET	(Stainless Steel)	NBLTS8
	SST	(Stainless Steel)	HBLTS8
	SEU	(Pre-Assy. Insertion Spring Nuts)	HBLTSB8
	SSU	(Pre-Assy. Insertion Spring Nuts Stainless Steel)	CHBLTS8
	SEP	(Post-Assy. Insertion Spring Nuts)	HBKTS8
	SSP	(Post-Assy. Insertion Spring Nuts Stainless Steel)	HBKTSB8
	SEC	(Washer Integrated Screws Nuts)	HBLTH8
	SET	(Stainless Steel)	HBLTF8
	SST	(Stainless Steel)	HBLUS8
	SEU	(Pre-Assy. Insertion Spring Nuts)	HBLUSB8

Applicable screws and nuts for fixing the brackets on extrusions come in set.
(Ex.) When HBLTS8 is specified,
Code Screws Nuts
SET CBM8-20 HNTT8-8
SST SCB8-20 HNTT8-8
SEU CBM8-20 HNTU8-8
SSU SCB8-20 SHNTU8-8
SEP CBM8-20 SHNTP8-8
SSP SCB8-20 SHNTP8-8
SEC HCBST8-24 HNTT8-8
Ⓢ When specifying other than HBLTS8, check for the applicable screws and nuts.
Ⓢ Screws for black anodized parts are HCBMTB (Trivalent Chromate Black). P.2858
Ⓢ Not RoHS compliant when -SET, -SEU or -SEP are specified.

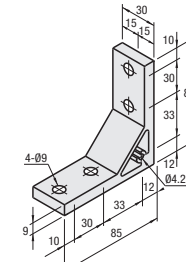
Extruded Brackets (For 1 Slot)

Slot Type: HFS8 Series (Aluminum Extrusions 40, 80 Square)



Thick Brackets

HBLTSW8

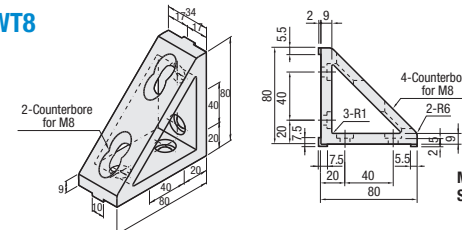


Material: A6N01SS-T5 Aluminum Alloy
Surface Treatment: Anodize

Part Number	Mass (g)	Applicable Screw / T Nut				Allowable Load (N)
		Screw	Qty.	T Nut	Qty.	
HBLTSW8	113	CBM8-20	4	HNTT8-8	4	3087

Triangle Brackets

HBLDSWT8
(With Tab)



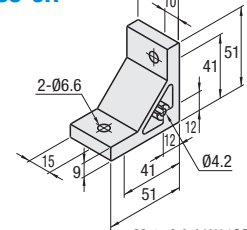
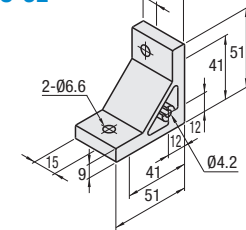
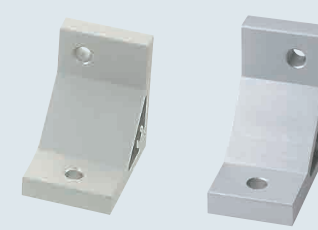
Material: A6N01SS-T5 Aluminum Alloy
Surface Treatment: Anodize

Part Number	Mass (g)	Applicable Screw / T Nut				Allowable Load (N)
		Screw	Qty.	T Nut	Qty.	
HBLDSWT8	195	CBM8-15	4	HNTT8-8	4	3087

Assembly Brackets for Different Extrusion Sizes

HBLTS8-6L

HBLTS8-6R

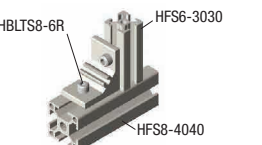


Material: A6N01SS-T5 Aluminum Alloy
Surface Treatment: Anodize

Part Number	Mass (g)	Applicable Screw / T Nut			
		Screw	Qty.	T Nut	Qty.
HBLTS8-6L	66	CBM6-20	1	HNTT8-6	1
HBLTS8-6R		CBM6-15		HNTT6-6	
		CBM6-20		HNTT8-6	
		CBM6-15		HNTT6-6	



Example of Extrusion Connection
Connection with Thick Bracket



Alterations	Code	Spec.	Applicable Brackets
Part Number Example	C	Part Number HBLTSW8	HBLTF8
			HBLUS8
Part Number Alterations	C	Part Number HBLTSW8 - (C / SET / SST / SEU / SSU / SEP / SSP / SEC)	HBLTSW8
			HBLTSW8 - SET

Alterations	Code	Spec.	Applicable Brackets
Mounting Holes for Cover	C	Adds taps on a bracket for cover mounting. (M5 on Both Sides) (Mounting screw P.2861 HCBM) *Tapping direction: Tapping is applied on only one side which is narrowed by offset.	HBLTF8
			HBLUS8
			HBKUS8
			HBLTSW8
			HBLTS8-6L*
			HBLTS8-6R*

Alterations	Code	Spec.	Applicable Brackets
Applicable Screws & Nuts Set	SET	(Stainless Steel)	HBLTF8
	SST	(Stainless Steel)	HBLUS8
	SEU	(Pre-assy. Insertion Spring Nuts)	HBLUSB8
	SSU	(Pre-assy. Insertion Spring Nuts Stainless Steel)	HBKUS8
	SEP	(Post-Assy. Insertion Spring Nuts)	HBKUSB8
	SSP	(Post-Assy. Insertion Spring Nuts Stainless Steel)	HBLTSW8
	SEC	(Washer Integrated Screws / Nuts)	HBLDSWT8
	SET	(Stainless Steel)	HBLTS8-6L
	SST	(Stainless Steel)	HBLTS8-6R
	SEU	(Pre-assy. Insertion Spring Nuts)	

Ⓢ Not RoHS compliant when -SET, -SEU or -SEP are specified.