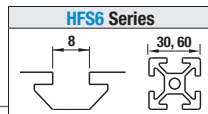


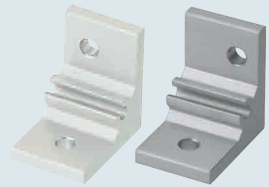
Tabbed Brackets (For 1 Slot)

Slot Type: HFS6 Series (Aluminum Extrusions 30, 60 mm Square)

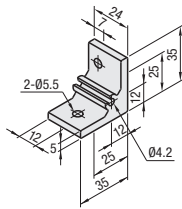


Features: Brackets to connect 30, 20 square Extrusions

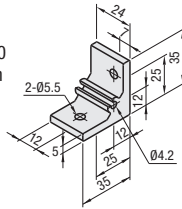
Assembly Brackets for Different Extrusion Sizes



HBLTS6-5L
For 30 Square – 20 Square Connection



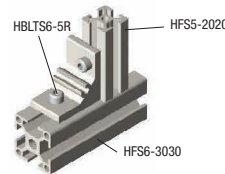
HBLTS6-5R
For 30 Square – 20 Square Connection



Material: A6N01SS-T5 Aluminum Alloy
Surface Treatment: Anodize

Part Number Type	Mass (g)	Applicable Screw, T Nut				Allowable Load (N)
		Screw	Quantity	T Nut	Quantity	
HBLTS6-5L	26	CBM5-12	1	HNTT6-5	1	—
		CBM5-10		HNTT5-5		
HBLTS6-5R	26	CBM5-12	1	HNTT6-5	1	
		CBM5-10		HNTT5-5		

Application Example



Part Number Example: **HBLTSW6**

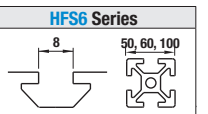
Alterations	Code	Spec.	Applicable Brackets
Mounting Holes for Cover	C	Adds a tap for a bracket for cover mounting. (M5 on Both Sides) (Mounting screw P.2861 HCBM)	HBLTSW6
			HBLTS6-5L
			HBLTS6-5R

Alterations	Code	Spec.	Applicable Brackets	Available Types						
				SET	SST	SEU	SSU	SEP	SSP	SEC
Applicable Screws and Nuts Set	SET SST (Stainless Steel)	Supplies a set of applicable screws and nuts for fixing the bracket to an extrusion. (Adds to the bracket price) (Ex.) When HBLTS6 is specified, Code Screws Nuts SET CBM6-15 HNTT6-6 SST SCB6-15 HNTTSN6-6 SEU CBM6-15 HNTU6-6 SSU SCB6-15 SHNTU6-6 SEP CBM6-15 HNTTP6-6 SSP SCB6-15 SHNTP6-6 SEC HCBST6-20 HNTT6-6 Ⓢ When specifying other than HBLTS6, check for the applicable screws and nuts.	HBLTSW6	•	•	•	•	•	•	•
	SEU (Pre-assy. Insertion Spring Nuts)		HBLDSW6	•	•	•	•	•	•	•
	SSU (Pre-assy. Insertion Spring Nuts Stainless Steel)		HBLDSWT6	•	•	•	•	•	•	•
	SEP (Post-Assy. Insertion)		HBLTS6-5L	•	—	—	—	—	—	—
	SSP (Post-Assy. Spring Nuts Stainless Steel)		HBLTS6-5R	•	—	—	—	—	—	—
	SEC (Captured Washer Screws / Nuts)									

Ⓢ Not RoHS compliant when -SET, -SEU or -SEP other than black anodized parts is specified.

Extruded Brackets (For 2 Slots)

Slot Type: HFS6 Series (Aluminum Extrusions 50, 60, 100 mm Square)



Features: Extruded Brackets to connect Extrusions with 2-slots (HFS6-6060, etc.) with one bracket.

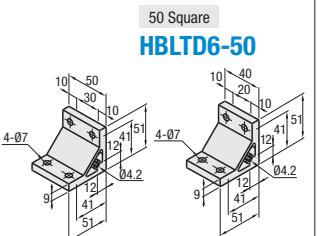
Thick Brackets



Type	Material	Surface Treatment
NBLTD6	6063-T5 Aluminum Alloy	Anodize
HBLTD6 (-50)		Anodize
HBLTDB6	A6N01SS-T5 Aluminum Alloy	Black Anodize
CHBLTD6		Clear Coating (Anodize + Clear Paint)

Ⓢ Both sides and screw holes of NBLTS6 are not anodized.

NBLTD6
HBLTD6
HBLTDB6
(Black Anodize)
CHBLTD6
(Clear Coating)



Part Number Type	Mass (g)	Applicable Screw, T Nut				Allowable Load (N)
		Screw	Qty.	T Nut	Qty.	
NBLTD6	111	CBM6-15	4	HNTT6-6	4	1960
HBLTD6						
HBLTDB6* (Black Anodize)						
CHBLTD6 (Clear Coating)						
HBLTD6-50						
HBLTD6-50	88					

*For repairing black anodizing, refer to P.2965

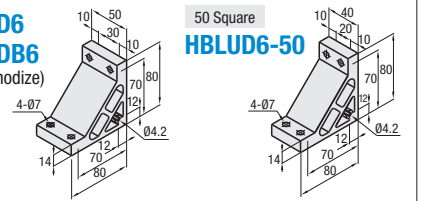
Features: Numbers of screws are the same as HBLTD6. Extrusions can be connected more securely.

Ultra Thick Brackets



Type	Material	Surface Treatment
HBLUD6	A6N01SS-T5 Aluminum Alloy	Anodize
HBLUDB6		Black Anodize
HBLUD6-50		Anodize

HBLUD6
HBLUDB6
(Black Anodize)



Part Number	Mass (g)	Applicable Screw, T Nut				Allowable Load (N)
		Screw	Qty.	T Nut	Qty.	
HBLUD6	256	CBM6-20	4	HNTT6-6	4	1960
HBLUDB6* (Black Anodize)						
HBLUD6-50						
HBLUD6-50	211	CBM6-20				

*For repairing black anodizing, refer to P.2965

Features: Brackets for 2-slots with twice as many screws. Extrusions can be connected more securely.

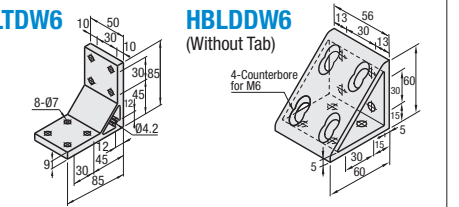
Thick Brackets Triangle Brackets



Type	Material	Surface Treatment
HBLDDW6	A6N01SS-T5 Aluminum Alloy	Anodize
HBLTDW6		

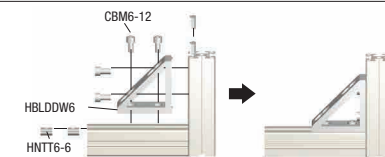
HBLTDW6

HBLDDW6
(Without Tab)



Part Number	Mass (g)	Applicable Screw / T Nut				Allowable Load (N)
		Screw	Qty.	T Nut	Qty.	
HBLDDW6	190	CBM6-12	8	HNTT6-6	8	2940
HBLTDW6	192	CBM6-15				

Application Example



Part Number Example: **HBLTD6**

Part Number Alterations: **HBLTD6** - (C / SET / SST / SEU / SSU / SEP / SSP / SEC)

Alterations	Code	Spec.	Applicable Brackets
Mounting Holes for Cover	C	Adds a tap for a bracket for cover mounting. (M5 on Both Sides) (Mounting screw P.2861 HCBM)	HBLTD6
			CHBLTD6
			HBLTD6-50
			HBLUD6
			HBLUD6-50
			HBLTDW6

Alterations	Code	Spec.	Applicable Brackets	Available Types						
				SET	SST	SEU	SSU	SEP	SSP	SEC
Applicable Screws and Nuts Set	SET SST (Stainless Steel)	Supplies a set of applicable screws and nuts for fixing the bracket to an extrusion. (Adds to the bracket price) (Ex.) When HBLTD6 is specified, Code Screws Nuts SET CBM6-15 HNTT6-6 SST SCB6-15 HNTTSN6-6 SEU CBM6-15 HNTU6-6 SSU SCB6-15 SHNTU6-6 SEP CBM6-15 HNTTP6-6 SSP SCB6-15 SHNTP6-6 SEC HCBST6-20 HNTT6-6 Ⓢ When specifying other than HBLTD6, check for the applicable screws and nuts.	NBLTD6	•	•	•	•	•	•	•
	SEU (Pre-assy. Insertion Spring Nuts)		HBLTD6	•	•	•	•	•	•	•
	SSU (Pre-assy. Insertion Spring Nuts Stainless Steel)		HBLTDB6	•	—	—	—	—	—	—
	SEP (Post-Assy. Insertion)		CHBLTD6	•	•	•	•	•	•	•
	SSP (Post-Assy. Spring Nuts Stainless Steel)		HBLTD6-50	•	•	•	•	•	•	•
	SEC (Captured Washer Screws / Nuts)		HBLUD6	•	•	•	•	•	•	•
			HBLUDB6	•	—	—	—	—	—	—
			HBLUD6-50	•	•	•	•	•	•	•
			HBLDDW6	•	•	•	•	•	•	•
			HBLTDW6	•	•	•	•	•	•	•

Ⓢ Screws for black anodized parts are HCBMTB (Trivalent Chromate Black). Refer to P.2858
Ⓢ Not RoHS compliant when -SET, -SEU or -SEP other than black anodized parts is specified.