

# Antivibration Rubber Mounts

Both Ends Threaded Stopper / Threaded & Plate Stopper Type

Takes up little space for installation. For types with slotted studs even easier to install, see P.2640.

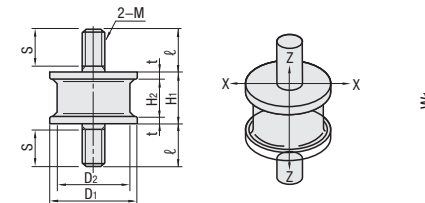
Antivibration Rubber Mounts – Both Ends Threaded Stopper / Threaded & Plate Stopper Type



RoHS 10

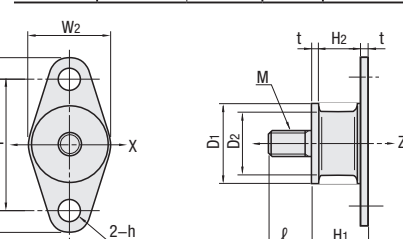
## Both Ends Threaded

Type	Material		Hardness	Accessories
	Body	Metal Fitting		
BGOMA	Natural Rubber	Steel (Trivalent Chromate)	Shore A60	Nut, Spring Washer 2 Pcs. Each
BGOMAC	Chloroprene Rubber	304 Stainless Steel	Shore A60	
BGOMAS	Chloroprene Rubber	Steel (Trivalent Chromate)	Shore A60	
BGOMAL	Natural Rubber	Steel (Trivalent Chromate)	Shore A45	



## Threaded & Plate Mount

Type	Material		Hardness	Accessories
	Body	Metal Fitting		
BGOMP	Natural Rubber	Steel (Trivalent Chromate)	Shore A60	Nut, Spring Washer 1 Pc. Each
BGOMPC	Chloroprene Rubber	Steel (Trivalent Chromate)	Shore A60	
BGOMPL	Natural Rubber	Steel (Trivalent Chromate)	Shore A45	

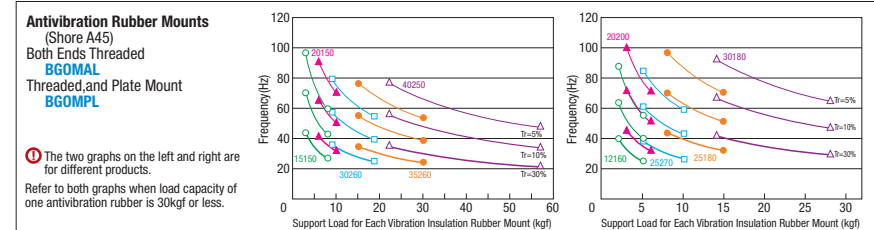
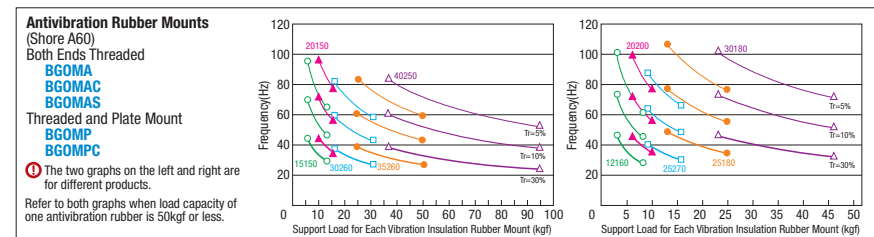


Part Number	Type	Nominal	D <sub>1</sub>	D <sub>2</sub>	H <sub>1</sub>	H <sub>2</sub>	t	ℓ	S	M (Coarse Thread)	W <sub>1</sub> x W <sub>2</sub>	h	P	Direction Z					X Direction Allowable Load N (kgf)	Rigidity Ratio KX/KZ				
														Allowable Load N (kgf)	Standard Load N (kgf)	Spring Constant N/mm (kgf/cm)	Allowable Load N (kgf)	Standard Load N (kgf)			Spring Constant N/mm (kgf/cm)			
Shore A60 Both Ends Threaded	BGOMA	12160	12	10	16	12.0	2.0	12	11	5	—	—	—	110	{11}	30-78	{3-8}	62	{63}	25	{2.5}	0.20		
	BGOMAC	15150	15	12	15	11.0								160	{16}	59-130	{6-13}	110	{110}	34	{3.5}	0.24		
	BGOMAS	20200	20	15	20	16.0								280	{29}	98-160	{10-16}	180	{180}	69	{7}	0.18		
Threaded & Plate Mount	BGOMP	25180	25	20	18	13.4	18	16	6	—	49 x 20	7	42	180	{18}	59-98	{6-10}	88	{90}	49	{5}	0.22		
	BGOMPC	25270			27	22.4								580	{59}	147-280	{15-29}	220	{220}	98	{10}	0.19		
	BGOMPL	30180			30	25								18	13.4	310	{32}	88-160	{9-16}	110	{110}	59	{6}	0.22
Shore A45 Both Ends Threaded	BGOMAL	30260	30	25	26	21.4	24	20	8	—	62 x 30	9	48	1700	{170}	415-830	{43-85}	610	{620}	250	{25}	0.15		
	BGOMAL	35260			35	30								26	21.4	760	{77}	196-370	{20-38}	180	{180}	150	{15}	0.22
	BGOMPL	40250			40	34								25	20.4	1100	{110}	275-550	{28-56}	250	{260}	260	{27}	0.24
Threaded & Plate Mount	BGOMPL	40250	40	34	25	20.4	30	25	8	—	76 x 40	9	60	1420	{145}	363-700	{37-71}	340	{350}	320	{33}	0.23		

Nominal	Shore A60 BGOMA, BGOMAC, BGOMAS, BGOMP, BGOMPC					Shore A45 BGOMAL, BGOMPL				
	Allowable Load N (kgf)	Standard Load N (kgf)	Spring Constant N/mm (kgf/cm)	X Direction Allowable Load N (kgf)	Rigidity Ratio KX/KZ	Allowable Load N (kgf)	Standard Load N (kgf)	Spring Constant N/mm (kgf/cm)	X Direction Allowable Load N (kgf)	Rigidity Ratio KX/KZ
12160	110	{11}	30-78	{3-8}	0.20	66	{7}	18-47	{1.8-5}	0.20
15150	160	{16}	59-130	{6-13}	0.20	96	{10}	35-78	{3.5-8}	0.20
20150	280	{29}	98-160	{10-16}	0.15	170	{17}	59-96	{6-10}	0.15
20200	180	{18}	59-98	{6-10}	0.19	110	{11}	35-59	{3.5-6}	0.19
25180	490	{50}	128-250	{13-25}	0.16	290	{30}	76-150	{7.7-15}	0.16
25270	310	{32}	88-160	{9-16}	0.20	190	{19}	53-96	{5.4-10}	0.20
30180	890	{91}	226-450	{23-46}	0.16	530	{55}	138-270	{14-28}	0.16
30260	610	{62}	147-300	{15-31}	0.19	370	{37}	93-180	{9.5-19}	0.19
35260	980	{100}	245-490	{25-50}	0.17	590	{60}	147-290	{15-30}	0.17
40250	1810	{185}	363-930	{37-95}	0.17	1090	{111}	218-560	{22-57}	0.17

- ① Spring constant in X direction is calculated by (spring constant in Z direction x rigidity ratio).
- ② Selection Methods, Mounting Methods, Properties, Cautions P.2638
- ③ No. 12160, No. 15150 not available for BGOMP, BGOMPC and BGOMPL.

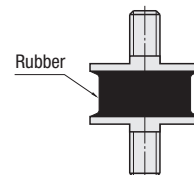
Part Number Example	Part Number
BGOMA15150	BGOMA15150



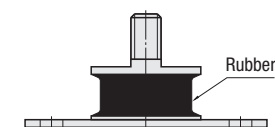
① Values in the graph are nominal for each type. ② The above values are not guaranteed values but a calculated ones.

## Section View

Both Ends Threaded



Threaded and Plate Mount



# Antivibration Rubber Mounts

Tapped & Threaded Stopper / Tapped & Plate Stopper Type

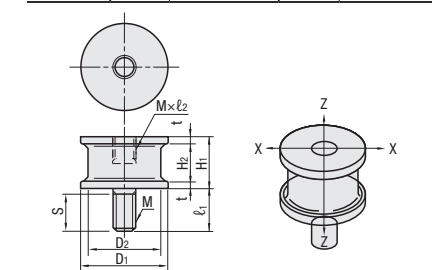
Antivibration Rubber Mounts – Tapped & Threaded Stopper / Tapped & Plate Stopper Type



RoHS 10

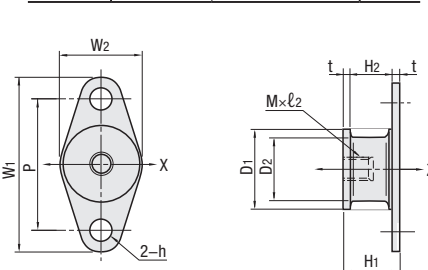
## Tapped & Threaded

Type	Material		Hardness	Accessories
	Body	Metal Fitting		
BGONA	Natural Rubber	Steel (Trivalent Chromate)	Shore A60	Nut, Spring Washer 1 pc. Each



## Tapped & Plate Mount

Type	Material		Hardness
	Body	Metal Fitting	
BGONP	Natural Rubber	Steel (Trivalent Chromate)	Shore A60



Part Number	Type	Nominal	D <sub>1</sub>	D <sub>2</sub>	H <sub>1</sub>	H <sub>2</sub>	t	ℓ	S	M (Coarse Thread)	ℓ <sub>2</sub>	W <sub>1</sub> x W <sub>2</sub>	h	P	Direction Z			X Direction Allowable Load N (kgf)	Rigidity Ratio KX/KZ													
															Allowable Load N (kgf)	Standard Load N (kgf)	Spring Constant N/mm (kgf/cm)															
Shore A60 Tapped & Threaded	BGONA	12160	12	10	16	12.0	2.0	12	11	5	4.5	—	—	—	110	{11}	30-78	{3-8}	62	{63}	25	{2.5}	0.20									
	15150	15	12	15	11.0	160									{16}	59-130	{6-13}	110	{110}	34	{3.5}	0.24										
	20150	20	15	20	16.0	280									{29}	98-160	{10-16}	180	{180}	69	{7}	0.18										
	20200			20	16.0	180									{18}	59-98	{6-10}	88	{90}	49	{5}	0.22										
	25180	25	20	18	13.4	580									{59}	147-280	{15-29}	220	{220}	98	{10}	0.19										
	25270			27	22.4	310									{32}	88-160	{9-16}	110	{110}	59	{6}	0.22										
	30180			30	25	18									13.4	1700	{170}	415-830	{43-85}	610	{620}	250	{25}	0.15								
	Tapped & Plate Mount	BGONP	30260	30	25	26									21.4	24	20	8	7.2	62 x 30	9	48	760	{77}	196-370	{20-38}	180	{180}	150	{15}	0.22	
		35260	35			30									26								21.4	53	{53}	275-550	{28-56}	250	{260}	260	{27}	0.24
		40250	40			34									25								20.4	1100	{110}	275-550	{28-56}	250	{260}	260	{27}	0.24
40250		40	34			25	20.4	1420	{145}	363-700	{37-71}	340	{350}	320	{33}								0.23									

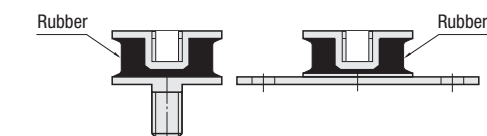
- ① Spring constant in X direction is calculated by (spring constant in Z direction x rigidity ratio).
- ② Selection Methods, Mounting Methods, Properties, Cautions P.2638
- ③ No. 12160, No. 15150 not available for BGONP.

Part Number Example	Part Number
BGONA15150	BGONA15150

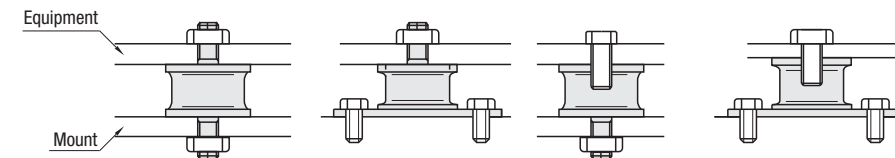
## Section View

Tapped and Threaded

Tapped and Plate Mount



Application Example
Equipment
Mount



## Antivibration Rubber Mounts

(Shore A60)

Tapped and Threaded

BGONA

Tapped and Plate Mount

BGONP

① The two graphs on the left and right are for different products.

Refer to both graphs when load capacity of one antivibration rubber is 50kgf or less.

① Values in the graph are nominal for each type. ② The above values are not guaranteed values but a calculated ones.

