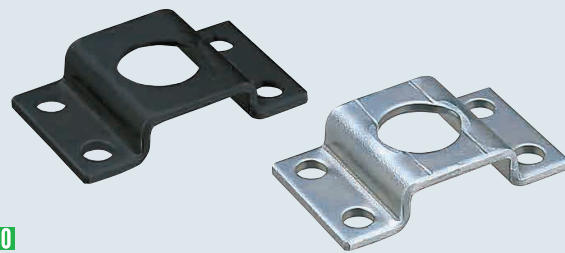


Sheet Metal Mounting Plate / Brackets (For Sensors)

Convex-Shaped

Sheet Metal Mounting Plate / Brackets (For Sensors) – Convex-Shaped



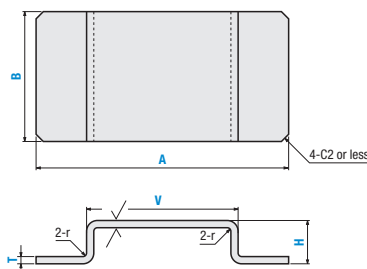
RoHS 10

Part Number		Material	Surface Treatment
Type	Material Code		
BLUZS BLUES BLUFS BLUJS	SP	Low Carbon Steel	—
	SPB		Black Oxide
	SPU		Ⓢ Trivalent Chromate (Clear)
	SPK	Trivalent Chromate (Black)	
	AM	5052 Aluminum Alloy	—
	AMW		Clear Anodize
AMB	Black Anodize		
SUD	304 Stainless Steel (2B)	—	

Ⓢ Material for plate thickness 4.5 and 6.0 is Low Carbon Steel.

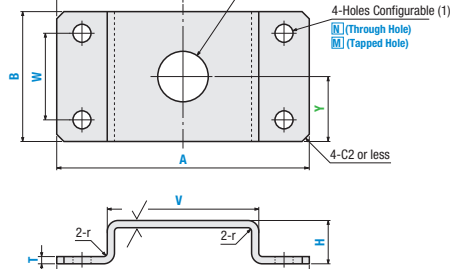
BLUZS (No Hole)

25/ (✓)



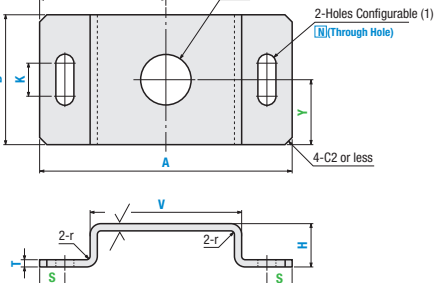
BLUES

25/ (✓)



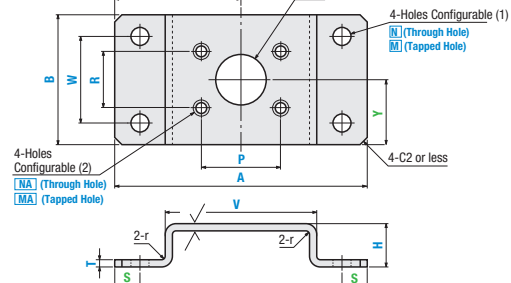
BLUFS

25/ (✓)



BLUJS

25/ (✓)



Ⓢ Parameters in green are optional. If these parameters are not specified, the hole alignment will be even against the center. For the details P.3898.

Part Number	1 mm Increment		Selection			1mm Increment		Hole Configurable (1)			Hole Configurable (2)		D							
	Type	Material Code	A	B	T	H	V	S	W	Code	Ordering Method	K		L	Y	S	G	Code	Ordering Method	
BLUZS BLUES BLUFS BLUJS	SP SPB SPU SPK AM AMW AMB SUD		30-200	20-200	Low Carbon Steel 5052 Aluminum Alloy 304 Stainless Steel	10-100	min 15- Ⓢ V≥H	Specify 0.1mm Increment			N (Bolt Hole) Ⓢ 0, 3, 4, 5, 6, 8, 10	Specify 0.1mm Increment Ⓢ K≤Nx5				3-30 0.5 Increment	Specify 0.1mm Increment	NA (Screw Through Hole) Ⓢ 0, 3, 4, 5, 6, 8, 10	MA (Tapped Hole) 0, 3, 4, 5, 6, 8, 10	3-30 0.5 Increment

Ⓢ If the specified hole location is close to the edges, the hole may be deformed but will be machined as specified if within machining limits.

Part Number Example

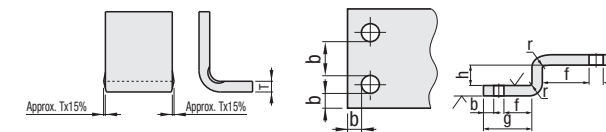
Part Number	A	B	T	H	V	S	W	Hole Configurable (1) Code / Nominal Dia.	K	L	Y	D	P	R	Hole Configurable (2) Code / Nominal Dia.
BLUJS - SUD	A80	B40	T3.0	H40	V50	S4	W20	N3		L40	Y20	D20	P25	R30	NA3

Sheet Metal Mounting Plate / Brackets (For Sensors)

Convex-Shaped, continued

Specifications / Machining Limits

1. For tolerance, refer to P.3893
2. Burr height 0.1 or less
3. Bend Angle Tolerance ±1°
4. Scratches caused by the press brake may occur. P.3893
5. Swelling due to bending
6. Machining limits (min. value)



Hole Selections

Hole	Screw Through Hole	Tapped Hole (Coarse)	Through Hole
Code	N, NA	M, MA	D, DA
Shape Diagram			

Ⓢ For the d dimensions, refer to the "N, NA Machining Dimensions" section below the Specifications Table.

Part Number Example

Part Number	A	B	T	H	V	CC
BLUZS - SP	A100	B50	T2.3	H20	V70	CC10

Alteration	Corner Cut (4 corners)	
		4-CC
Code	CC	
Spec.	CC = Specify in 1 mm Increment Ⓢ 1≤CC≤20 Ordering Code: Adds CC to the end of the part number. (Ex.) --CC10	

