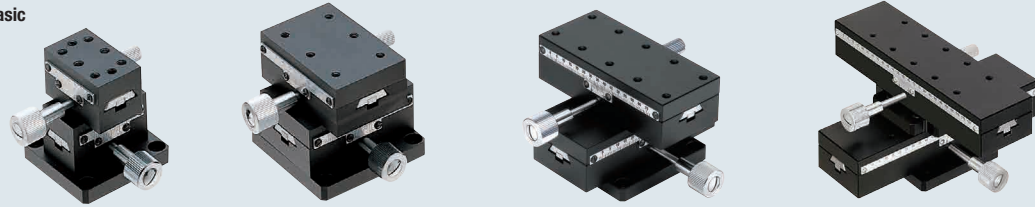


[High Precision] Dovetail Stages, Rack & Pinion

XY-Axis Rectangular Basic

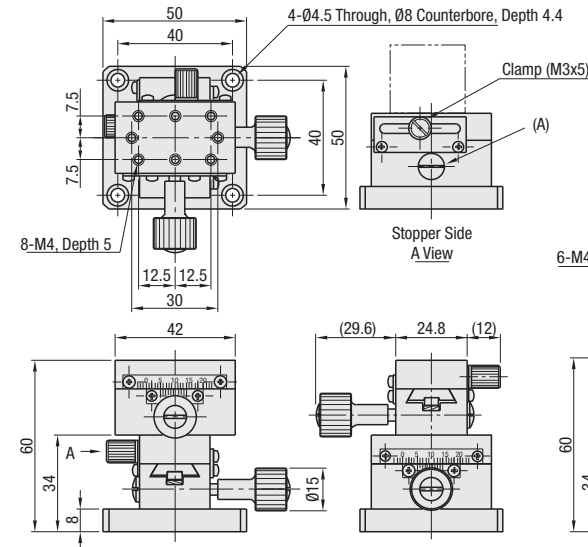
Travel per Rotation	Small	Medium	Large
Stroke	Short	Medium	Long
Load Capacity	Light	Medium	Heavy

XY-Axis Rectangular Basic

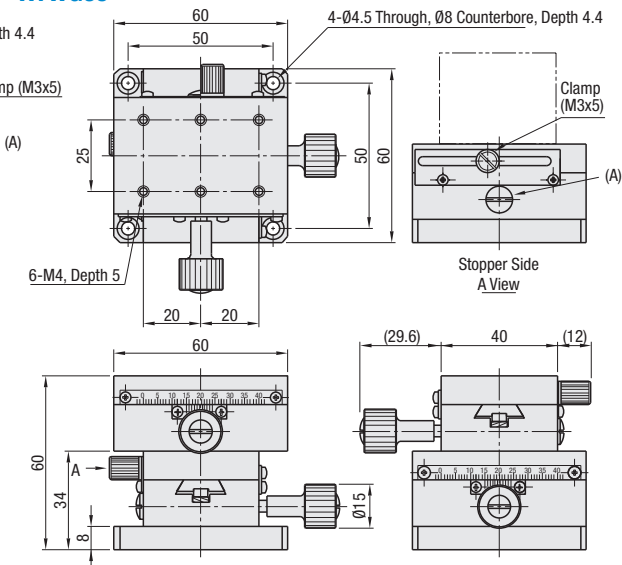


RoHS 10

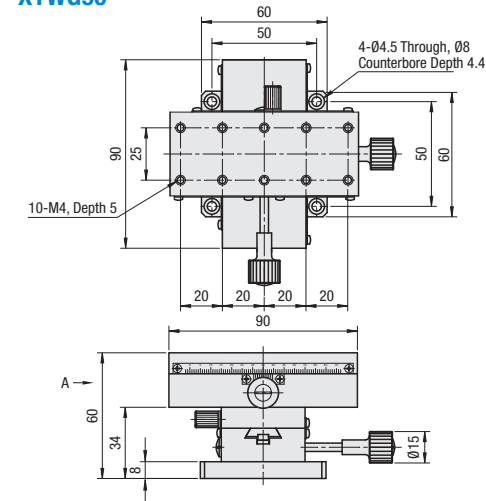
XYWG40



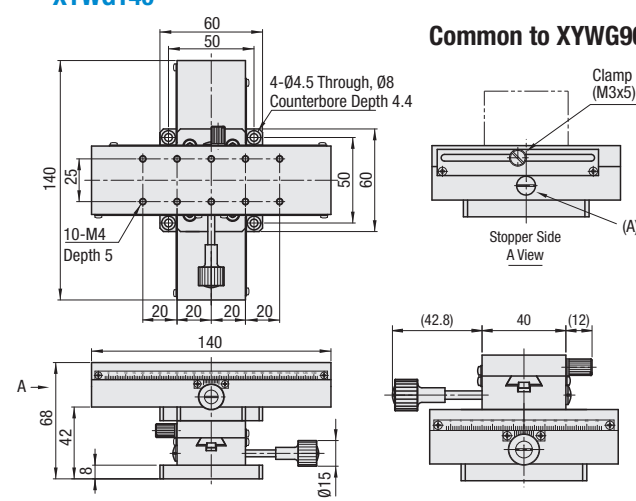
XYWG60



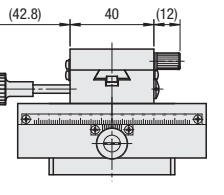
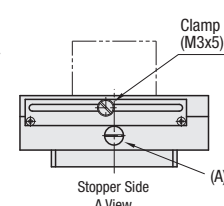
XYWG90



XYWG140



Common to XYWG90/140



Material: Aluminum Alloy
Surface Treatment: Black Anodize

By turning the preload adjustment screw (A) clockwise with a flathead screw driver, the stage slides slowly. By turning counterclockwise, the stage slides quickly and smoothly.

Part Number	Stage Surface (mm)	Travel Distance (mm)	Travel per Knob Rotation (mm)	Load Capacity (N)	Travel Accuracy Straightness (µm)	Weight (kg)
XYWG	40	24.8 x 42	±12	24.5	30 µm	0.29
	60	40 x 60	±21			0.51
	90	40 x 90	±35	34.3		0.73
	140	40 x 140	±60	1.08		



Part Number Example
XYWG90

Resolution (Vernier Scale Indication): 0.1 mm/division
Knob Cover HDCVR15 (Sold Separately): Ø15 knobs can be increased in diameter by installing the cover. P.2011

[High Precision] Dovetail Stages, Rack & Pinion

XY-Axis Reinforced Clamp

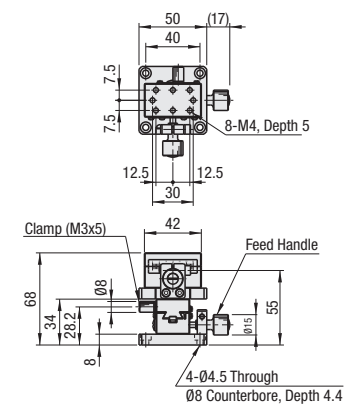
Travel per Rotation	Small	Medium	Large
Stroke	Short	Medium	Long
Load Capacity	Light	Medium	Heavy

XY-Axis Reinforced Clamp

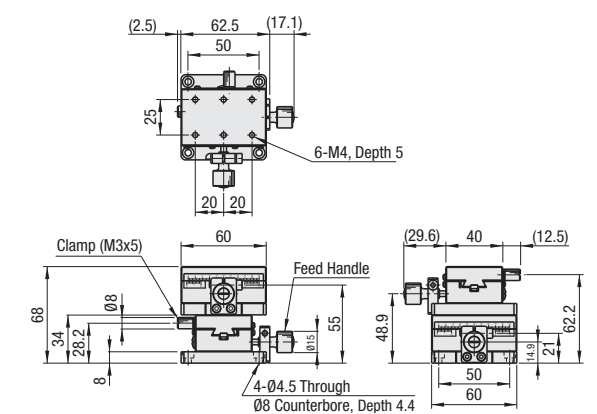


RoHS 10

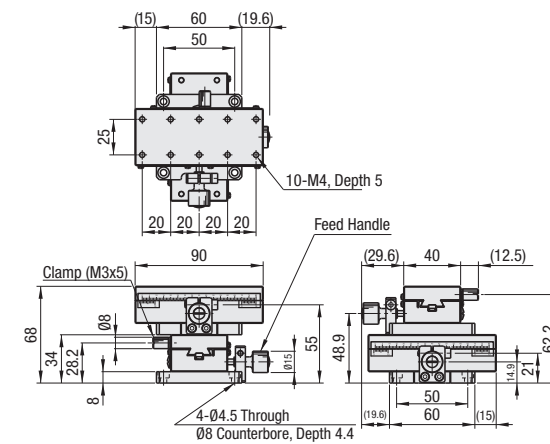
XYWGCL40



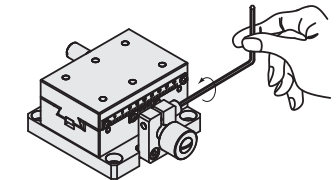
XYWGCL60



XYWGCL90



Clamp Reinforcing Method



There will be residual clearances with carriage retaining only with a Reinforced Clamp. Use a Clamp Screw in combination.

Material: Aluminum Alloy
Surface Treatment: Black Anodize

Part Number	Stage Surface (mm)	Travel Distance (mm)	Travel per Knob Rotation (mm)	Load Capacity (N)	Travel Accuracy Straightness (µm)	Orthogonality (µm)	Weight (kg)
XYWGCL	40	24.8 x 42	±12	24.5	30	100	0.35
	60	40 x 60	±21				0.59
	90	40 x 90	±35	34.3			0.81

Resolution (Vernier Scale Indication): 0.1 mm/division
Knob Cover HDCVR15 (Sold Separately): Ø15 knob diameter can be increased to Ø24 by installing the cover. P.2011



Part Number Example
XYWGCL140