

[High Precision] Goniometer Space Saving Stages Combination

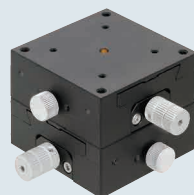
Travel per Rotation	Small	Medium	Large
Stroke	Short	Medium	Long
Load Capacity	Light	Medium	Heavy

Features: Normally, 2-axis stages are configured by stacking two normal 1-axis stages so the feed knobs and clamps occupy three stage sides; hindering operator access in certain installations. This new product is a combination of one standard and one reversed (mirrored) configuration stages to make two sides obstruction-free, enabling installations in limited spaces for space saving machine designs.

Note: For dimension details, see the catalog's 1-axis stage dimension details or the CAD data.

Dovetail Goniometer Stage: DSGFWG

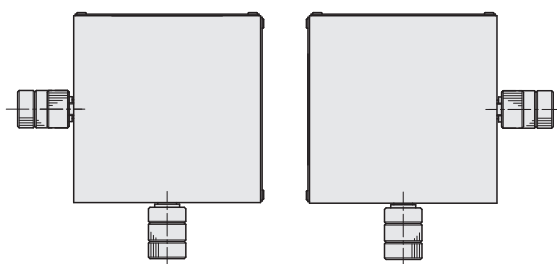
DSGFWG (2 Axis combination of GFG)



RoHS 10

Goniometer
DSGFWG

(Right and Left side reversed : -R)



Part Number Type	No.	Stage Surface (mm)	Stage Configuration (GFG: P2100)		Travel (mm) (Top / Bottom)	Horizontal Load Capacity (N)	Reference Part Number (Page)		
			Top	Bottom					
DSGFWG	25-20	25 x 25	GFG25-20-NR	GFG25-35	±15 / ±10	19.6	GFWG (P2100)		
	25-20-R		GFG25-20	GFG25-35-NR					
	30-30	30 x 30	GFG30-30-NR	GFG30-44	±10 / ±10	9.8			
	30-30-R		GFG30-30	GFG30-44-NR					
	40-25	40 x 40	GFG40-25-NR	GFG40-40	±20 / ±15	27.4			
	40-25-R		GFG40-25	GFG40-40-NR					
	40-40		GFG40-40-NR	GFG40-60				±15 / ±10	26.4
	40-40-R		GFG40-40	GFG40-60-NR					
	50-50	50 x 50	GFG50-50-NR	GFG50-68	±10 / ±10	24.5			
	50-50-R		GFG50-50	GFG50-68-NR					
	50-68		GFG50-68-NR	GFG50-86				±10 / ±8	24.5
	50-68-R		GFG50-68	GFG50-86-NR					
	60-35	60 x 60	GFG60-35-NR	GFG60-60	±25 / ±20	51.9			
	60-35-R		GFG60-35	GFG60-60-NR					
	60-60		GFG60-60-NR	GFG60-80				±20 / ±15	52.9
	60-60-R		GFG60-60	GFG60-80-NR					
	80-100	80 x 80	GFG80-100-NR	GFG80-130	±18 / ±15	42.1			
	80-100-R		GFG80-100	GFG80-130-NR					

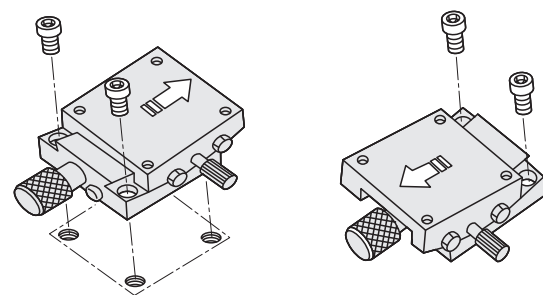
Part Number Example

Part Number: DSGFWG60-60, DSGFWG80-100-R

Application Example

How to mount a Goniometer Stage

Move the top plate to access mounting holes, as shown below.

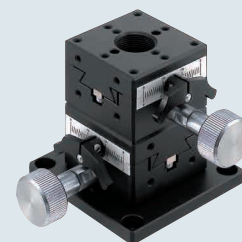


ⓘ Extension Cover HDEXT12 (Sold separately)
Ø12 Feed Screw knob can be extended. P2035

[High Precision] Dovetail Stages, Rack & Pinion XY-Axis Square Basic

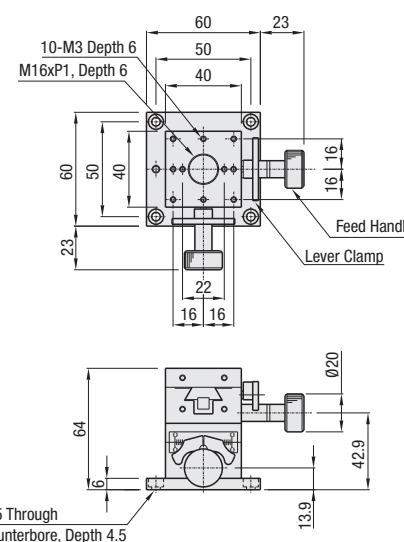
Travel per Rotation	Small	Medium	Large
Stroke	Short	Medium	Long
Load Capacity	Light	Medium	Heavy

XY-Axis Square Basic



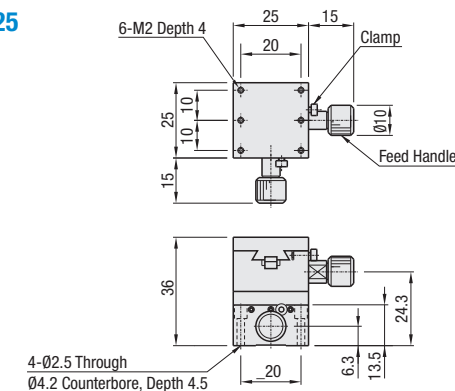
RoHS 10

XYFG40

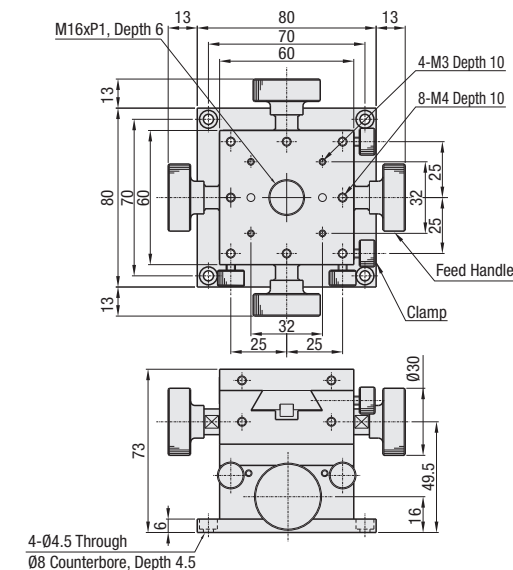


Part Number	Material	Surface Treatment
XYFG25	Low Cadmium Brass	Black Fluororesin Treatment
XYFG40	Aluminum Alloy	Black Anodize
XYFG60		

XYFG25



XYFG60



Part Number Type	No.	Stage Surface (mm)	Travel Distance (mm)	Travel per Knob Rotation (mm)	Load Capacity (N)	Travel Accuracy Straightness	Weight (kg)	Accessories (4 pcs.)	
								Type M-L	
XYFG	25	25 x 25	±5	17	28.4	20 µm	0.18	SCB2-12	
	40	40 x 40	±10	20	27.4			0.37	SCB4-6
	60	60 x 60	±20	18	29.4			1.19	SCB4-6

ⓘ Min. Reading (Vernier Scale Indication) : 0.1 mm/division

Part Number Example

Part Number: XYFG40

Part Number Alterations

Part Number - (M): XYFG40 - M

ⓘ See the CAD data for details.

Alteration	No Bottom Plate	
	XYFG40	XYFG60
Spec.	4-Ø4.3 Through (from back), Ø6 Counterbore, Depth 10 (M3 bolt hole)	2-Ø4.5 Through (from back), Ø8 Counterbore, Depth 6 (M4 bolt hole)
Code	M	

ⓘ Not applicable to XYFG25.
ⓘ The feed knobs will interfere with the mating bases.