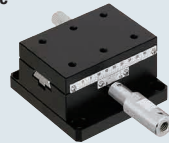


[High Accuracy] Dovetail Rack & Pinion Stages / Adapter Plates

X-Axis Handle Extension

Travel per Rotation	Small	Medium	Large
Stroke	Short	Medium	Long
Load Capacity	Light	Medium	Heavy

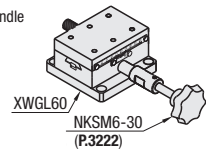
X-Axis Handle Extension



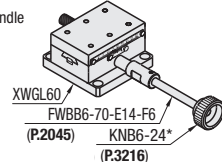
RoHS 10
 XY-Axis P.2051
 Z-Axis P.2063

Application Example

(Example of handle extension (1))



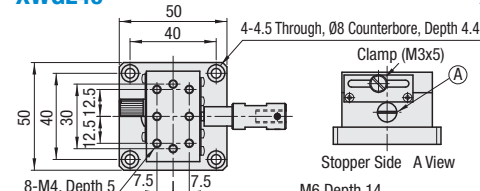
(Example of handle extension (2))



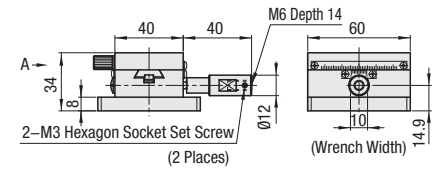
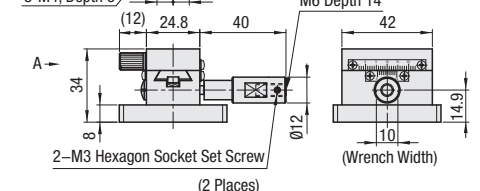
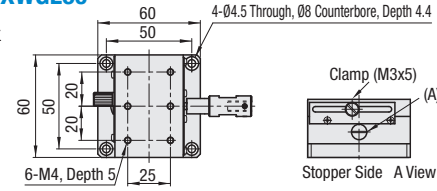
*Apply adhesive to prevent loosening.

Knob Extension Method
 Use the M6-Depth 14 tapped hole on the knob.
 Knob length and diameter can be increased for large objects and plates placed on the carriage.
 (Ex. 1) Seven Lobed knob P.3222 NKSM6-30 can be mounted to extend the handle by 36 mm.
 (Ex. 2) Length Specified Hex Socket Cap Screw P.2022 FWBB6-70-E14-F6 and Clamp Knob P.2045 KNB6-24 can be combined to extend the knob further by 63 mm.
 XDTS90 P.2010

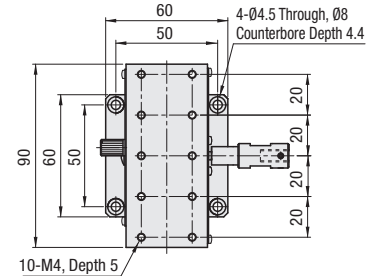
XWGL40



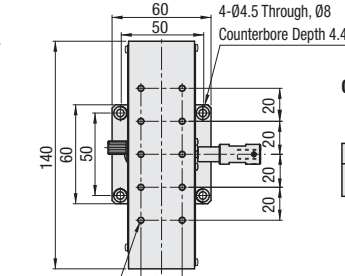
XWGL60



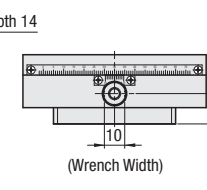
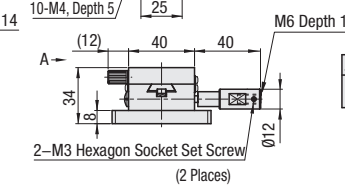
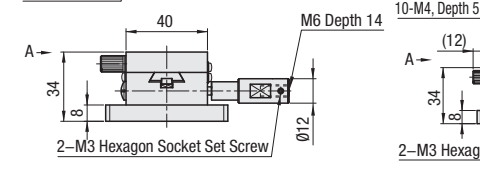
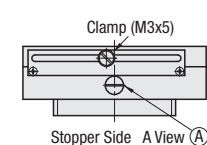
XWGL90



XWGL140



Common to XWGL90/140



Material: Aluminum Alloy
 Surface Treatment: Black Anodize

By turning the preload adjustment screw (A) clockwise with a flathead screw driver, the stage slides slowly. By turning counterclockwise, the slides quickly and smoothly.

Part Number Type	No.	Stage Surface (mm)	Travel Distance (mm)	Travel per Knob Rotation (mm)	Load Capacity (N)		Travel Accuracy		Weight (kg)
					Horizontal	Vertical	Straightness	Parallelism	
XWGL	40	24.8 x 42	±12	18	29.4	14.7	20 μm	30 μm	0.17
	60	40 x 60	±21		0.29				
	90	40 x 90	±35		0.40				
	140	40 x 140	±60		0.56				

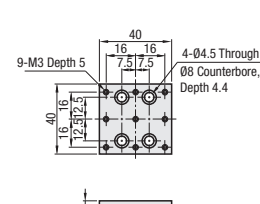
Resolution (Vernier Scale Indication): 0.1 mm/division

Adapter Plates

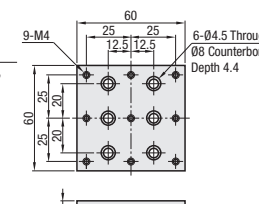


RoHS 10

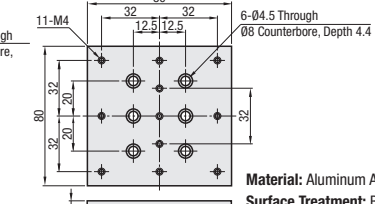
XPLT40



XPLT60



XPLT80



Material: Aluminum Alloy
 Surface Treatment: Black Anodize

Part Number Type	No.	Top Face Size (mm)	Compatible Stage	
			XWGL	XWGL
XPLT	40	40 x 40	XWGL40 (P.2021), XYWGL40 (P.2046), ZWGL40 (P.2060) REG40.60 (P.2096) XLWG (P.2025) ZLWG (P.2062) XSSL (P.2030) XSSL (P.2030) XSP (P.2020)	
	60	60 x 60	XWGL60, 90, 140 (P.2021) XYWGL60, 90, 140 (P.2046) ZWGL60, 90, 140 (P.2060) XSL (P.2029) XSLC (P.2029) XSB (P.2023) REG60 (P.2096)	
	80	80 x 80		

Part Number Example
 Part Number XPLT40

[High Precision] Dovetail Rack & Pinion Stages

X-Axis Clamp Reinforcement / X-Axis Coarse / Fine Feed Handle

Travel per Rotation	Small	Medium	Large
Stroke	Short	Medium	Long
Load Capacity	Light	Medium	Heavy

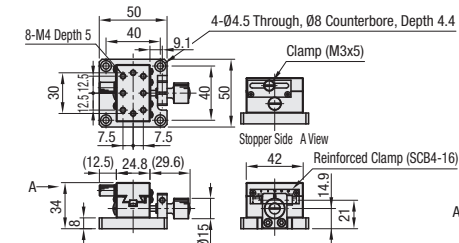
Features: Feed screw handle can be directly clamped for improved retaining performance over the standard XWG on P.2021.

X-Axis Clamp Reinforcement

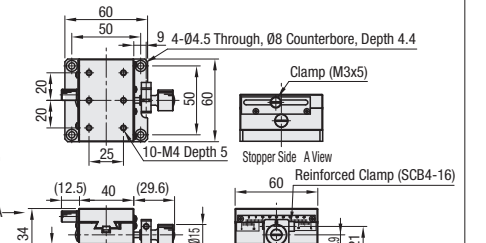


RoHS 10

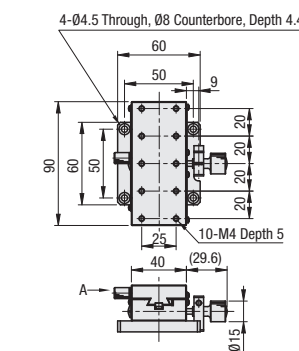
XWGCL40



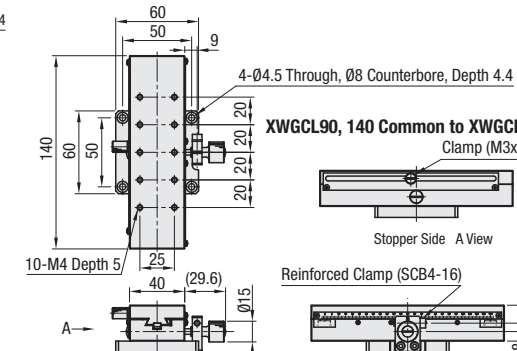
XWGCL60



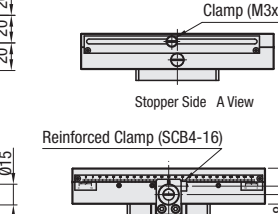
XWGCL90



XWGCL140



XWGCL90, 140 Common to XWGCL90/140



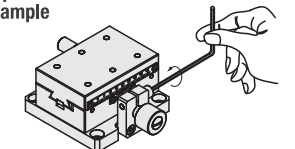
Material: Aluminum Alloy
 Surface Treatment: Black Anodize

Part Number Type	No.	Stage Surface (mm)	Travel Distance (mm)	Travel per Knob Rotation (mm)	Load Capacity (N)		Travel Accuracy		Weight (kg)
					Horizontal	Vertical	Straightness	Parallelism	
XWGCL	40	24.8 x 42	±12	18	29.4	14.7	20 μm	30 μm	0.17
	60	40 x 60	±21		0.29				
	90	40 x 90	±35		0.40				
	140	40 x 140	±60		0.56				

Knob Cover HDCVR15 (Sold Separately): Ø15 knobs can be increased in diameter by installing the cover. P.2011

Application Example

Clamp Reinforcing Method



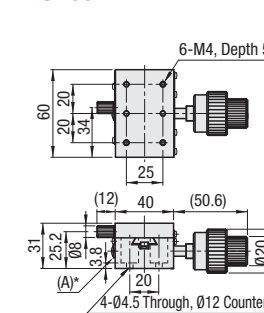
Retention by only the reinforced clamp is not sufficient to obtain zero backlash. Using with a clamp screw is recommended.

Part Number Example
 Part Number XWGCL40

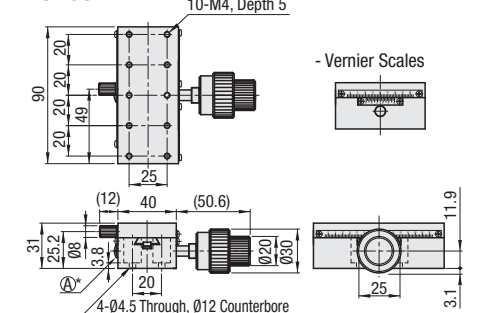
X-Axis Coarse / Fine Feed Handle



XSB60



XSB90



*By turning the preload adjustment screw (A) clockwise with a flathead screw driver, the stage slides slowly, and by turning counterclockwise to "stage slides slowly. By turning counterclockwise, the stage slides quickly and smoothly.

RoHS 10

Material: Aluminum Alloy
 Surface Treatment: Black Anodize

Part Number Type	No.	Stage Surface (mm)	Travel Distance (mm)	Travel Per Knob Handle Rotation (mm)		Load Capacity (N)		Travel Accuracy		Weight (kg)	Accessory (4 pcs.) Type M-L
				Coarse	Fine	Horizontal	Vertical	Straightness	Parallelism		
XSB	60	40 x 60	±21	18	2.3	39.2	19.6	30 μm	30 μm	0.35	SCB4-8
	90	40 x 90	±35								

Resolution of the vernier scales for Coarse/Fine Knob Stages is 0.05mm.

Coarse / Fine Feed Knob will interfere with the mating bases.

Adjustable Plate XPLT: Use this plate when connecting stages with non-matching mounting holes. P.2022

Part Number Example
 Part Number XSB60