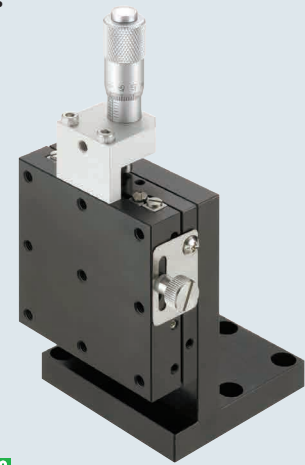


[Standard] Cross Roller

Z-Axis

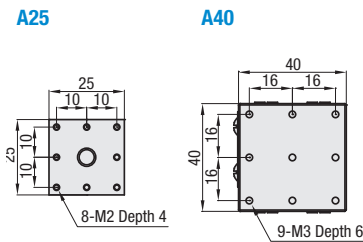
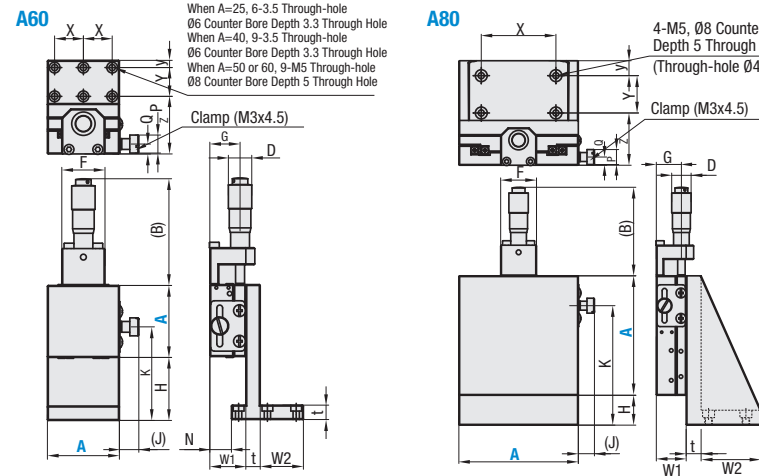
Travel per Rotation	Small	Medium	Large
Stroke	Short	Medium	Long
Load Capacity	Light	Medium	Heavy

Z-Axis



RoHS 10

ZCRS



Ⓞ Bracket mounting holes for ZCRS60 and 80 are tapped and counterbored enabling both the top/bottom mounting.

Material: Aluminum Alloy
Surface Treatment: Black Anodize

Part Number	Top View					Front View					Side View								
	Type	A	(B)	H	Travel Distance (mm)	F	K	(J)	D	G	N	W ₁	W ₂	t	P	Q	X	Y	y
ZCRS	25	41	35	±3.2	13	45	(6.8)	9.5	12.5	7	15	24	8	6	4.5	17	16	4	
	40	59	35	±6.5	24	52	(10.8)	13	16.8	12	20	24	8	10	5.5	16	16	4	
	50	59	30		24	61	(10.8)	13	16.8	10	20	30	10	10	5.5	20	20	5	
	60	59	25		24	64	(10.8)	13	16.8	10	20	40	10	10	5.5	25	25	5	
	90	80	20	±12.5	24	80	(10.8)	13	16.8	—	20	40	10	10	5.5	50	25	10	
	100	80	20	±12.5	24	80	(10.8)	13	16.8	—	20	50	10	10	5.5	50	25	10	
	120	156.5	30	±25	24	101	(10.8)	19.1	12.7	—	20	50	10	10	5.5	50	25	10	

Z-Axis Stages

Part Number	Type	A	Stage Surface (mm)	Load Bearing Capacity	Travel Accuracy	Moment Load Capacity (N · m)			Moment Rigidity (N / cm)			Weight (kg)
						Pitching	Yawing	Rolling	Pitching	Yawing	Rolling	
ZCRS	25	20 x 25	4.9 (14.7)	30 μm	1.1	0.8	0.4	3.03	2.85	1.8	0.06	
	40	40 x 40	9.8 (49)		2.7	2.2	2.0	0.38	0.42	0.28	0.24	
	50	50 x 50	14.7 (49)		3.5	3.0	3.3	0.2	0.22	0.12	0.34	
	60	60 x 60	19.6 (49)		5.2	4.3	5.5	0.12	0.11	0.07	0.46	
	90	80 x 80	49 (49)		19.2	15.1	17.3	0.05	0.05	0.04	0.76	
	100	90 x 90			25.0	20.0	22.0	0.05	0.05	0.04	1.03	
	120	100 x 100			36.0	30.0	33.0	0.06	0.07	0.05	1.2	
120	120 x 120	57.2		44.7	66.7	0.03	0.02	0.01	1.79			

- Ⓞ Micrometer Head Resolution: 10 μm/division
- Ⓞ Travel per micrometer knob rotation is 0.5 mm
- Ⓞ Knob Cover HDCVR13 (Sold Separately): Ø13 micrometer knob diameter can be increased by installing the cover. P.2035
- Ⓞ Extension Cover HDEXT13 (Sold Separately): Ø13 micrometer head or feed screw knobs can be extended by installing the cover. P.2035

Part Number Example	Part Number
	ZCRS40

[High Precision] Stage, Dovetail Rack & Pinion

X-Axis Square Basic / X-Axis Coarse / Fine Feeds

Travel per Rotation	Small	Medium	Large
Stroke	Short	Medium	Long
Load Capacity	Light	Medium	Heavy

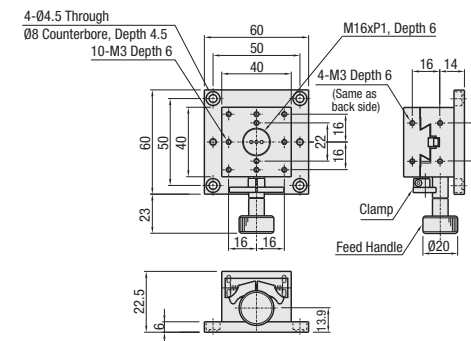
Features: The 40 and 60 sizes can be ordered with the bottom plates removed, as alterations.

X-Axis Square Basic

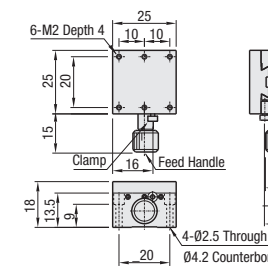


RoHS 10

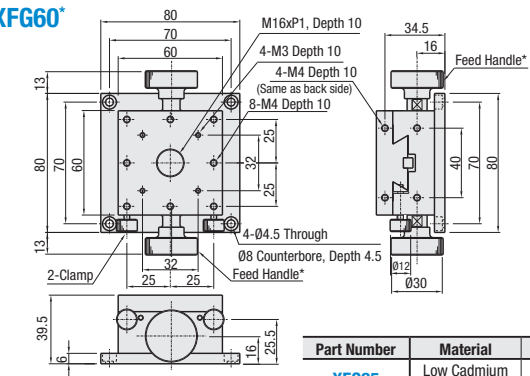
XFG40



XFG25



XFG60*



Part Number	Material	Surface Treatment
XFG25	Low Cadmium Brass	Black Fluororesin Treatment
XFG40	Aluminum Alloy	Black Anodize
XFG60		

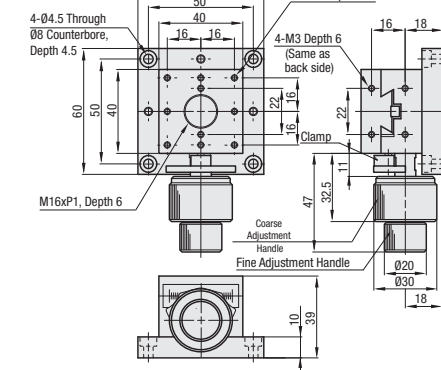
* The feed knob for XFG60 can be operated from either side.

X-Axis Coarse / Fine Feeds

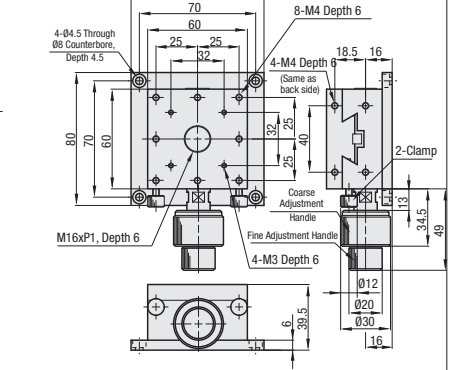


RoHS 10

XSFG40



XSFG60



Part Number	Type	Stage Surface (mm)	Travel Distance (mm)	Travel Per Knob Rotation (mm)		Load Capacity (N)		Travel Accuracy (μm)		Moment Capacity (N · m)			Parallelim (μm)	Weight (kg)	Accessories (4 pcs.) Type M-L
				Coarse	Fine	Horizontal	Vertical	Straightness	Motion Parallelism	Pitching	Yawing	Rolling			
XFG	25	25 x 25	±5	17	—	29.4	6.9	30	80	0.5	0.5	0.5	50	0.09	SCB2-12
	40	40 x 40	±10	20	—	39.2	14.7	20	30	3.0	3.0	2.0	40	0.21	SCB4-6
	60	60 x 60	±20	18	—	39.2	19.6	30	50	7.0	5.0	7.0	60	0.64	SCB4-6
XSFG	40	40 x 40	±10	20	≈2.6	29.4	14.7	20	30	3.0	3.0	2.0	40	0.30	SCB4-10
	60	60 x 60	±20	18	≈2.3	39.2	19.6	30	50	7.0	5.0	7.0	60	0.51	SCB4-6

Ⓞ Resolution (Vernier Scale Indication): 0.1 mm/division

Ⓞ See the CAD data for the details.

Part Number Example	Part Number
	XFG40
	XSFG60

Part Number Alterations	Part Number - (M)
	XSFG40 - M

Alteration	No Bottom Plate
XFG40 / XSFG40	XFG60 / XSFG60
Spec.	<p>4-Ø3.5 Through (from back), Ø6 Counterbore, Depth 10 (M3 bolt hole)</p> <p>2-Ø4.5 Through (from back), Ø8 Counterbore, Depth 6 (M4 bolt hole)</p> <p>Ⓞ Not applicable to XFG25.</p> <p>Ⓞ The feed knobs will interfere with the mating bases.</p>
Code	M