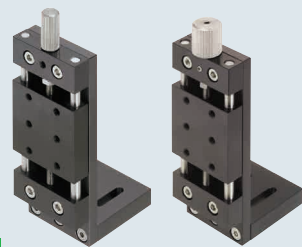


Simplified Adjustments (Z Axis Feed Screw)

Standard Type – Standard Handle / Large Handle

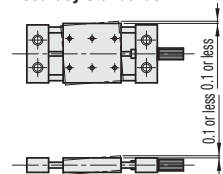
Simplified Adjustments (Z Axis Feed Screw) – Standard Type Feed Screw



RoHS10

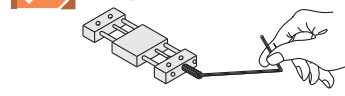
Type		Main Body		Shaft	Knob	Feed Screw	Accessories
Standard Handle	Large Handle	Material	Surface Treatment	Material	Material	Material	
ZKNEJ	ZKJL	Aluminum Alloy	Black Anodize	304 Stainless Steel	303 Stainless Steel	304 Stainless Steel	Hex Socket Head Cap Screw (SCB4-15) 2 pcs.

Accuracy Standards



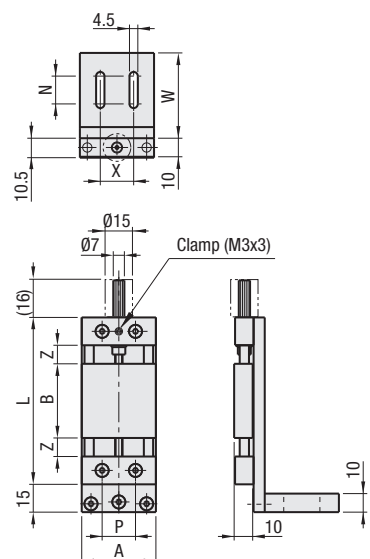
⚠ Not recommended for precise positioning due to its clearance shown on the left.

Application Example

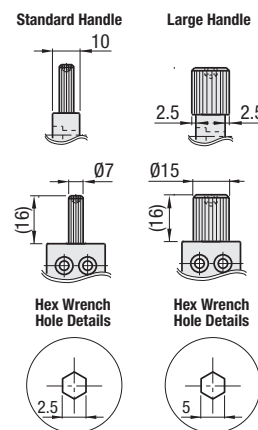


Long stroke moves can be made easy with use of ball-point hex wrench.

ZKNEJ Standard Handle
ZKJL Large Handle

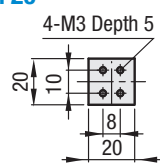


Handle Shape Comparisons

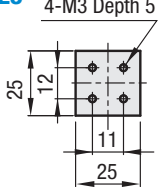


Stage Top Mounting Hole Dimensions

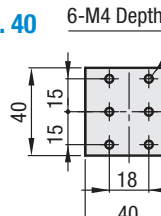
No. 20



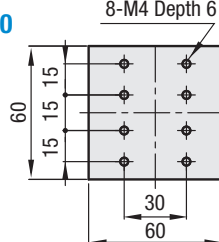
No. 25



No. 40



No. 60



⚠ Do not force the handle to turn past the end of the travel limits as it may cause the handle to come loose.

Part Number	Type	No.	Stage Surface (mm)	Travel Distance (mm)	z	L	P	W	X	N	Load Capacity (N)	Weight (kg)
ZKNEJ ZKJL		20	20 x 20	±7	8	66	8	36	10	10	9.8	0.08
		25	25 x 25									
		40	40 x 40	±9	10	90	18	46	18	15	19.6	0.22
		60	60 x 60									

⚠ Travel per Rotation: 0.7 mm

Part Number Example: ZKJL40

Part Number Alterations:
 ZKJL60 - (MMR) - (CLC)
 ZKNEJ20 - MMR - CLC
 ZKNEJ40 - MMR - CLC

Alterations	Mount a Scaled Label	Change of Clamp (Knurled Knob)
Code	MMR	CLC
Spec.	Adds a scaled label on a Z axis bracket. ⚠ Minimum Graduation: 0.5 mm	Changes Clamp Screw to Knurled Knob

Simplified Adjustments (Z Axis Push Screw)

Standard Type

Simplified Adjustments (Z Axis Push Screw) – Standard Type Push Screw

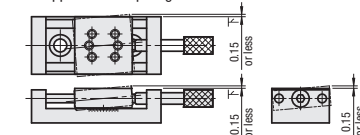


RoHS10

Type	Main Body		Shaft	Spring	Push Screw	Accessories
	Material	Surface Treatment				
ZKNG	Aluminum Alloy	Black Anodize	303 Stainless Steel	304 Stainless Steel	1045 Carbon Steel Equivalent (Electroless Nickel Plating)	Hex Socket Low Head Cap Screw (CBS4-6) 2 pcs.

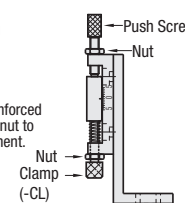
Accuracy Standards

⚠ There are some mechanical clearances, as shown on the left, that are not recommended for positioning applications requiring accuracies.



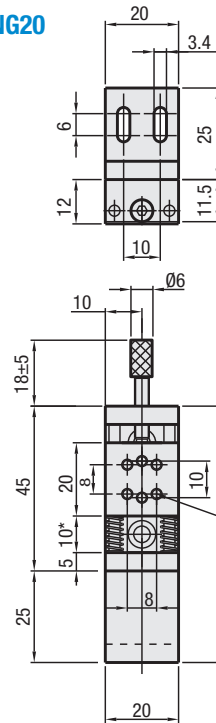
Application Example

The push screw and clamp (Alterations: -CL) can be reinforced by combining with an extra nut to form a double-nut arrangement.

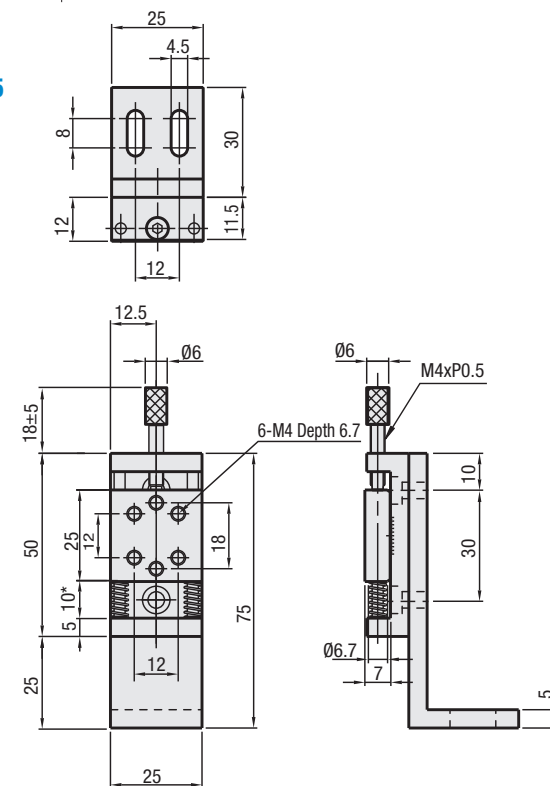


*Dimensions when scale is set at 0

ZKNG20



ZKNG25



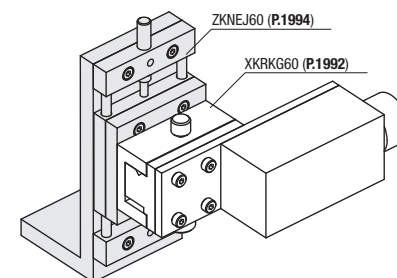
Part Number	Type	No.	Stage Surface (mm)	Travel Distance (mm)	Load Capacity (N)	Weight (kg)
	25	25 x 25	0.07			

⚠ Travel per Rotation: 0.5 mm ⚠ Minimum Graduation: 0.5 mm

Part Number Example: ZKNG20

Application Example

Suitable for low magnification camera XZ-axis adjustments by combining with an X-Axis Rack & Pinion Unit on P.1994.



Part Number Alterations: ZKNG20 - CL

Alteration	Opposite Clamp Bolt
Code	CL
Spec.	Opposing clamp screw for table immobilizing (M4, Pitch 0.7) will be included.