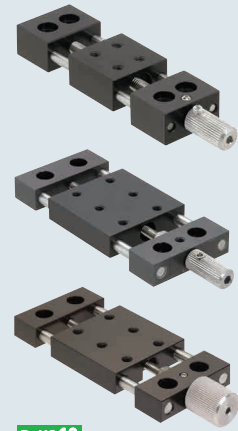


Simplified Adjustments (Z Axis Feed Screw)

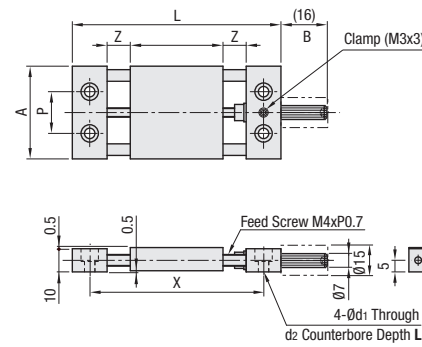
Standard Type – Standard Handle / Large Handle / M6 Mounting Holes

ⓘ Travel per rotation 0.7 mm

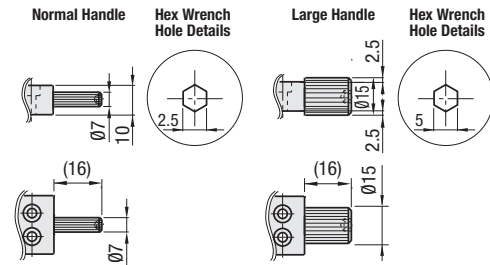


RoHS 10

	Type		Main Body		Shaft	Knob	Feed Screw	Accessories
	Standard Handle	Large Handle	Material	Surface Treatment	Material	Material	Material	
Standard	XKNEJ	XKJL	Aluminum Alloy	Black Anodize	304 Stainless Steel	303 Stainless Steel	304 Stainless Steel	No. 20: CBSST3-12, 4 pcs. (Low Head) No. 25: SCB3-10, 4 pcs.
M6 Mounting Holes	XKJM	XKJML						No. 40, 40A, 60, 60A: SCB4-10, 4 pcs.

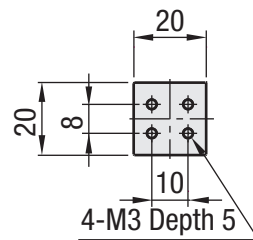


Handle Shape Comparisons

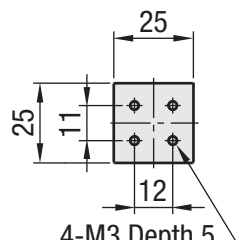


Stage Top Mounting Hole Dimensions A-B (*marked only for XKJM and XKJML)

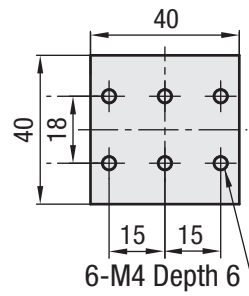
No. 20



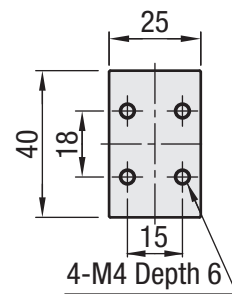
No. 25



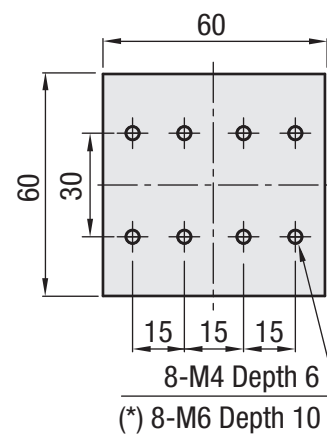
No. 40



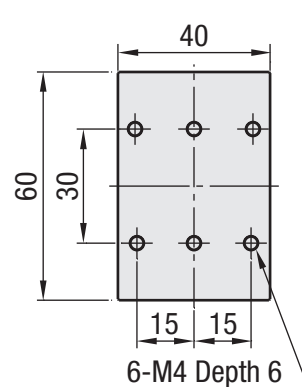
No. 40A



No. 60(*)



No. 60A



- ⓘ Table surfaces and bottoms are 0.5 mm higher than the end mounts.
- ⓘ Large Handle can cause interference, when used with main body plate due to its larger height.
- ⓘ When large handle is required, interference can be avoided by choosing Alteration Code MMR.
- ⓘ Do not force the handle to turn past the end of the travel limits as it may cause the handle to come loose.

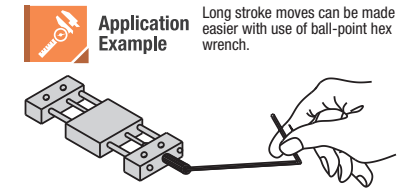
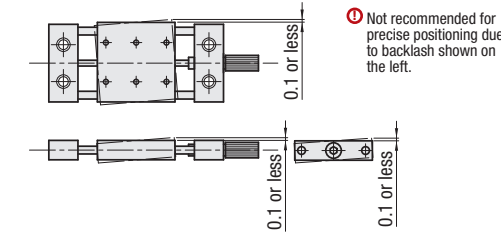
Simplified Adjustments (Z Axis Feed Screw)

Standard Type – Standard Handle / Large Handle / M6 Mounting Holes, *continued*

Part Number	Stage Surface (mm)	Travel Distance (mm)	A	L	Z	B	P	X	d1	d2	ℓ	Load Capacity (N)		Weight (kg)	
												Horizontal	Vertical		
XKNEJ XKJL	20	20 x 20	±7	20	66	8	20	8	51	3.2	6	2.3	19.6	9.8	0.04
	25	25 x 25	±7	25	71	8	25	11	56	3.5	6	3.2			0.05
	40	40 x 40	±9	40	90	10	40	18	75	4.5	7.5	4.2	39.2	19.6	0.10
	40A	40 x 25	±17			17.5	25								0.10
	60	60 x 60	±13			15	60	0.18							
	60A	60 x 40	±23			25	40	0.15							
XKJM XKJML	60	60 x 60	±13	60	120	15	60	30	105						0.18

ⓘ Travel per rotation 0.7 mm

Accuracy Standards

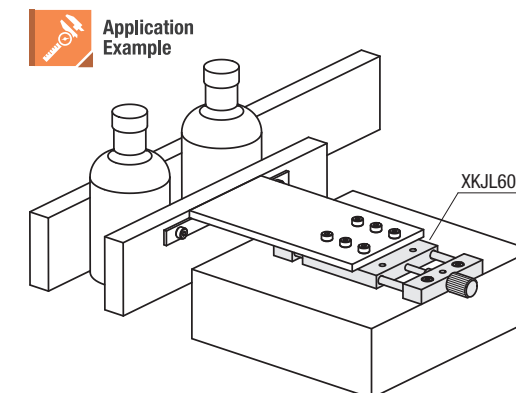


Application Example Long stroke moves can be made easier with use of ball-point hex wrench.

Part Number Example	Part Number
	XKNEJ40 XKJML60

Part Number Alterations	Part Number	(MMR)	(CLC)
	XKJL40A	- MMR	- CLC
	XKNEJ20	- MMR	- CLC
	XKJM60	- MMR	- CLC

Alterations	Mounting of a Scaled Plate on the Stage		Change of Clamp (Knurled Knob)																														
	Code	MMR		CLC																													
Spec.	<p>Mounts a scaled plate to the stage. ⓘ Minimum Graduation: 0.5 mm The accessory screws will be changed as shown below right.</p> <p>Material: 6063 Aluminum Alloy Surface Treatment: Black Anodize</p>	<p>ⓘ Scaled Plate alteration will change the mounting hole pitch since a plate is attached to the stage.</p> <table border="1"> <thead> <tr> <th>No.</th> <th>P₁</th> <th>P₂</th> <th>d₁</th> <th>d₂</th> <th>ℓ</th> </tr> </thead> <tbody> <tr> <td>20</td> <td>26</td> <td>8</td> <td>2.5</td> <td>4.3</td> <td>4</td> </tr> <tr> <td>25</td> <td>31</td> <td>11</td> <td>3.5</td> <td>6.0</td> <td>3.5</td> </tr> <tr> <td>40 (A)</td> <td>50</td> <td>18</td> <td>4.5</td> <td>7.5</td> <td>3</td> </tr> <tr> <td>60 (A)</td> <td>75</td> <td>30</td> <td>4.5</td> <td>7.5</td> <td>3</td> </tr> </tbody> </table> <p>Accessories: (4 Pcs.) No.20: SCB2-5 No.25: SCB3-6 No.40 (A): CBSST4-8 No.60 (A): CBSST4-8</p>	No.	P ₁	P ₂	d ₁	d ₂	ℓ	20	26	8	2.5	4.3	4	25	31	11	3.5	6.0	3.5	40 (A)	50	18	4.5	7.5	3	60 (A)	75	30	4.5	7.5	3	<p>Changes Clamp Screw to Knurled Knob</p>
No.	P ₁	P ₂	d ₁	d ₂	ℓ																												
20	26	8	2.5	4.3	4																												
25	31	11	3.5	6.0	3.5																												
40 (A)	50	18	4.5	7.5	3																												
60 (A)	75	30	4.5	7.5	3																												



Conveyor width adjustments during setup changes