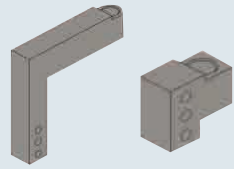


# Pin Retainers

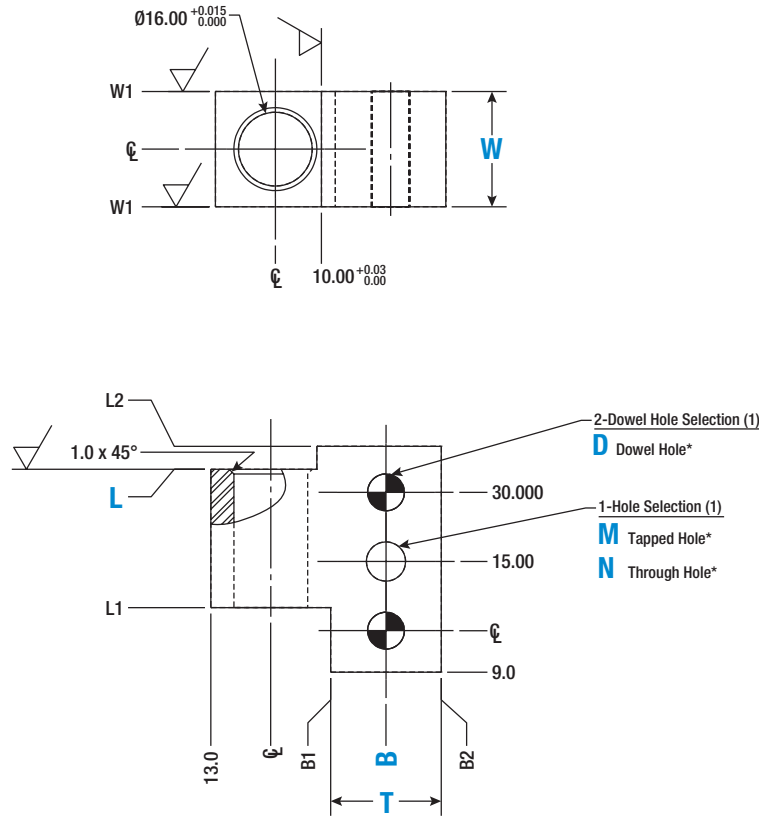
## Configurable 3 Sidehole



3D CAD is available online.

Type	Material	Finish
APR3S	A-36 Steel	Black Oxide
SAPR3S	304 Stainless Steel	—

Tolerance					
Dim.	Tol.	Finish (Ra)	Geometric		
0.0	±0.3	6.0 μm			0.015 T.I.R
0.00	±0.03	3.0 μm			
0.000	±0.020	1.6 μm			



Configurable NAAMS (L-3 Sidehole)												
Part Number		T Thickness	B Length (1 mm inc.)	L Length (1 mm inc.)	Hole Selection		B1 (±0.3)	B2 (±0.3)	L1 (±0.3)	L2 (±0.3)	W1 (±0.3)	
Type	(W) Width				N/M Hole Selection	D Dowel Hole						
						Tolerance						
APR3S	25	20	25-110 (±0.020)	35-120 (±0.3)	N9	D6F (F7)	+0.010 / +0.022	=B-(T/2)	=B-(T/2)	=L-30	=L+5	=W/2
SAPR3S	30	24			N11	D6H (H6)	+0.000 / +0.008					
					M8	D8F (F7)	+0.013 / +0.028					
					M10	D8H (H6)	+0.000 / +0.009					

N – Through Hole, N9 for M8 Screw, N11 for M10 Screw  
M – Tapped Hole (Coarse Thread), M8 x 1.25; M10 x 1.5  
D – Dowel Hole  
D, N & M – Holes are machined to a nominal depth of twice the diameter

**Part Number Example**

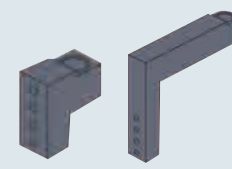
Type	Width	T	B	L	Hole (N/M)	Dowel (D)	Alteration (CH)
APR3S	25	T20	B37	L42	N9	D8F	
APR3S	25	T20	B37	L42	N9	D8F	CH

**Application Example**

Code	CH
Description	Add 45° Chamfer
Spec	8 (W=25) 10 (W=30)

# Pin Retainers

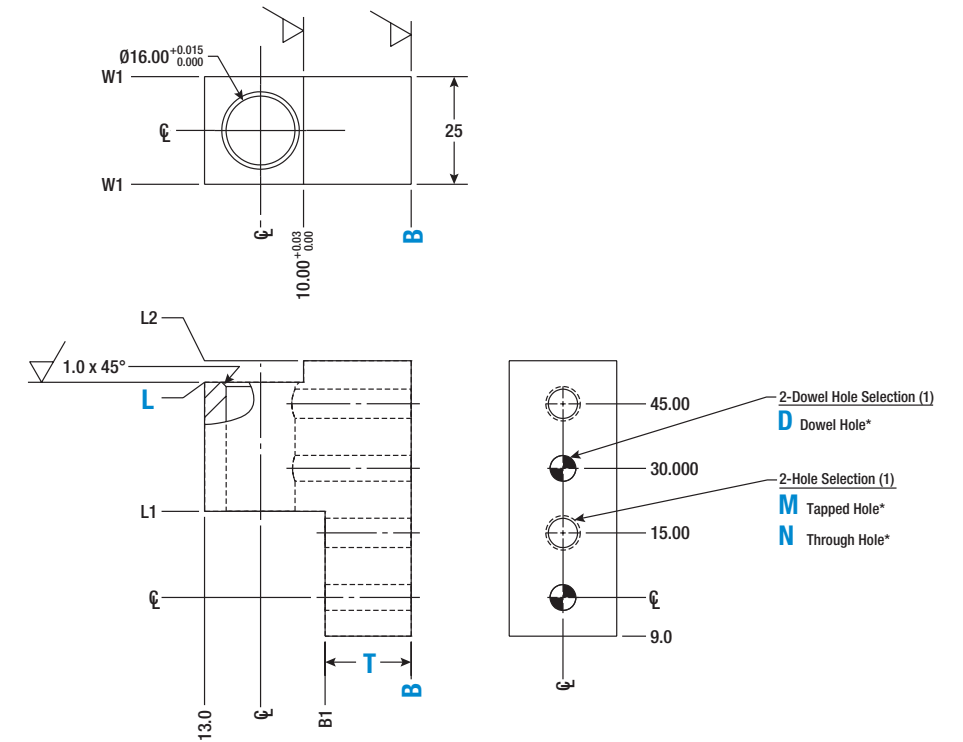
## Configurable 4 Facehole



3D CAD is available online.

Type	Material	Finish
APR4F	A-36 Steel	Black Oxide
SAPR4F	304 Stainless Steel	—

Tolerance					
Dim.	Tol.	Finish (Ra)	Geometric		
0.0	±0.3	6.0 μm			0.015 T.I.R
0.00	±0.03	3.0 μm			
0.000	±0.020	1.6 μm			



Configurable NAAMS (L-3 Facehole)											
Part Number		T Thickness	B Length (1 mm inc.)	L Length (1 mm inc.)	Hole Selection		B1 (±0.3)	L1 (±0.3)	L2 (±0.3)	W1 (±0.3)	
Type	(W) Width				N/M Hole Selection	D Dowel Hole					
						Tolerance					
APR4F	25	20	35-120 (±0.020)	50-120 (±0.3)	N9	D6F (F7)	+0.010 / +0.022	=B-T	=L-30	=L+5	=W/2
SAPR4F	25	24			N11	D6H (H6)	+0.000 / +0.008				
					M8	D8F (F7)	+0.013 / +0.028				
					M10	D8H (H6)	+0.000 / +0.009				

N – Through Hole, N9 for M8 Screw, N11 for M10 Screw  
M – Tapped Hole (Coarse Thread), M8 x 1.25; M10 x 1.5  
D – Dowel Hole  
D, N & M – Holes are machined to a nominal depth of twice the diameter

**Part Number Example**

Type	Width	T	B	L	Hole (N/M)	Dowel (D)	Alteration (CH)
APR4F	25	T20	B37	L62	N9	D8F	
APR4F	25	T20	B37	L62	N9	D8F	CH

**Application Example**

Code	CH
Description	Add 45° Chamfer
Spec	8 (W=25)