

Pin Retainers

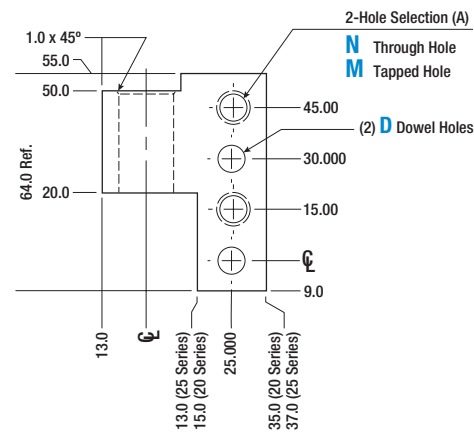
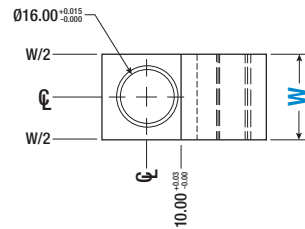
Standard L-4 Sidehole



3D CAD is available online.

Type	Material	Finish
APR	A-36 Steel	Black Oxide
	304 Stainless Steel	—

Tolerance					
Dim.	Tol.	Finish (Ra)	Geometric		
0.0	±0.3	6.0 µm			0.015 T.I.R
0.00	±0.03	3.0 µm		Surfaces	
0.000	±0.020	1.6 µm			



Standard NAAMS (25 mm Series Pin Retainers)							
Type	Hole Selection (A) / Material				W	D Dowel Hole	
	M10		N11			Tolerance	
	A-36	304	A-36	304			
APR	030M	031M	032M	033M	25.0	8 H6	+0.000 / +0.009

M10 (M10 x 1.5 Tapped Hole), N11 (Ø11.0 Through Hole).
Standard NAAMS specifications are controlled by the NAAMS organization and the latest version of these products will be produced in compliance to: www.naamsstandards.org.

Standard NAAMS (20 mm Series Pin Retainers)							
Type	Hole Selection (A) / Material				W	D Dowel Hole	
	M8		N9			Tolerance	
	A-36	304	A-36	304			
APR	336M	337M	338M	339M	25.0	6 F7	+0.010 / +0.022
	231M	232M	233M	234M		8 F7	+0.013 / +0.028
	330M	331M	332M	333M	30.0	6 F7	+0.010 / +0.022
	201M	202M	203M	204M		8 F7	+0.013 / +0.028

M8 (M8 x 1.25 Tapped Hole), N9 (Ø9.0 Through Hole).
Standard NAAMS specifications are controlled by the NAAMS organization and the latest version of these products will be produced in compliance to: www.naamsstandards.org.

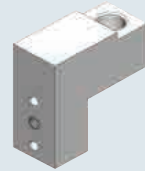
Part Number Example

Standard Part Number

Type: APR, Specification: 337M

Pin Retainers

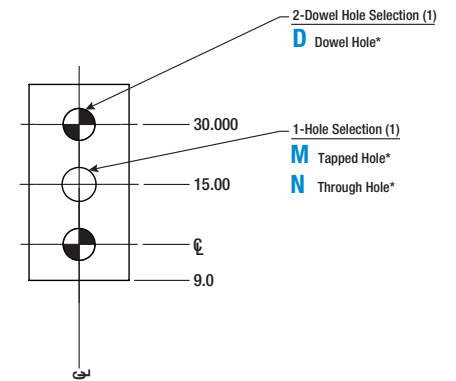
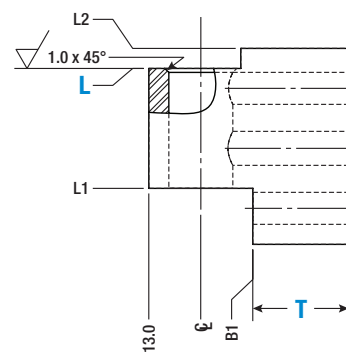
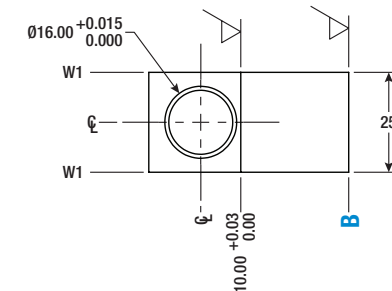
Configurable 3 Facehole



3D CAD is available online.

Type	Material	Finish
APR3F	A-36 Steel	Black Oxide
SAPR3F	304 Stainless Steel	—

Tolerance					
Dim.	Tol.	Finish (Ra)	Geometric		
0.0	±0.3	6.0 µm			0.015 T.I.R
0.00	±0.03	3.0 µm		Surfaces	
0.000	±0.020	1.6 µm			



Configurable NAAMS (L-3 Facehole)											
Type	(W) Width	T Thickness	B Length (1 mm inc.)	L Length (1 mm inc.)	Hole Selection		B1 (±0.3)	L2 (±0.3)	L1 (±0.3)	W1 (±0.3)	
					N/M Hole Selection	D Dowel Hole					
											Tolerance
APR3F	25 (±0.3)	20 24 (±0.3)	35-120 (±0.020)	35-120 (±0.3)	N9	D6F (F7)	+0.010 / +0.022	=B-T	=L-5	=L-30	=W/2
N11					D6H (H6)	+0.000 / +0.008					
M8					D8F (F7)	+0.013 / +0.028					
SAPR3F					M10	D8H (H6)	+0.000 / +0.009				

N – Through Hole, N9 for M8 Screw, N11 for M10 Screw
M – Tapped Hole (Coarse Thread), M8 x 1.25; M10 x 1.5
D – Dowel Hole
D, N & M – Holes are machined to a nominal depth of twice the diameter

Part Number Example

Type: APR3F, Width: 25, T: T20, B: B37, L: L42, Hole (N/M): M8, Dowel (D): D8F, Alteration (CH)

Application Example

Code	CH
Description	Add 45° Chamfer
Spec	8 (W=25)