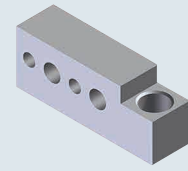
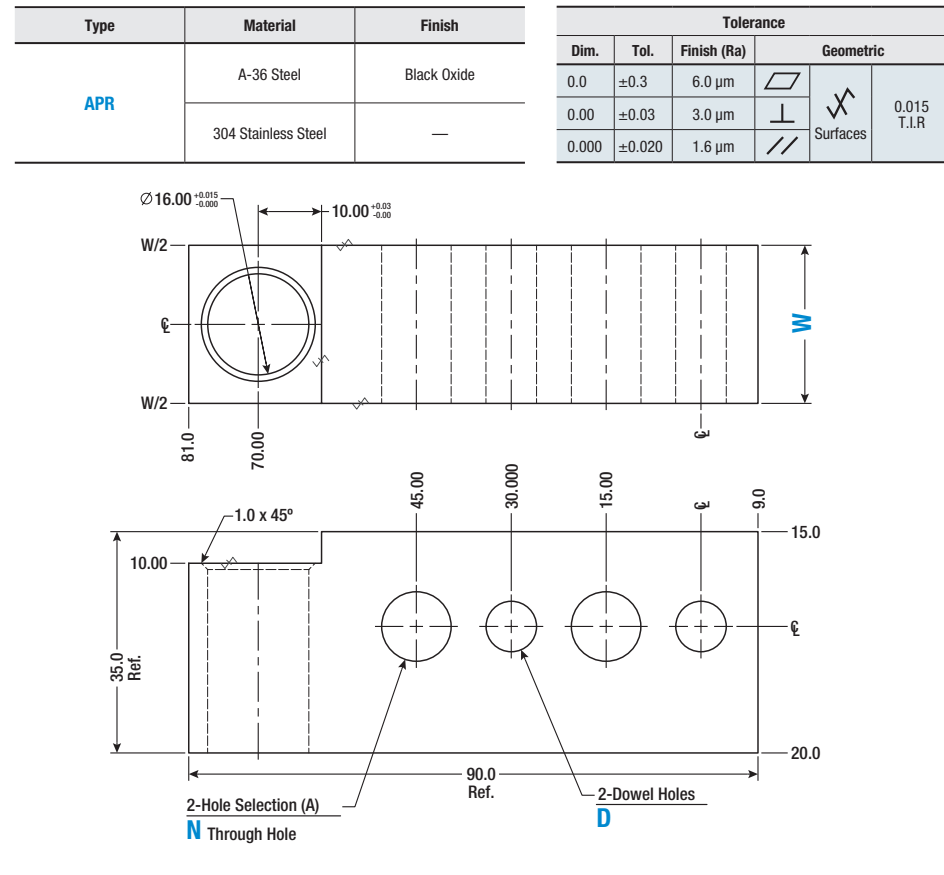


# Pin Retainers

## Standard I-4 Sidehole



3D CAD is available online.



Standard NAAMS (25 mm Series Pin Retainers)					
Type	Hole Selection (A) / Material		W	D Dowel Hole	Tolerance
	N11				
	A-36	304			
APR	070M	071M	25.0	8 H6	+0.000 / +0.009

N11 (Ø11.0 Through Hole).  
Standard NAAMS specifications are controlled by the NAAMS organization and the latest version of these products will be produced in compliance to: [www.naamsstandards.org](http://www.naamsstandards.org).

Standard NAAMS (20 mm Series Pin Retainers)					
Type	Hole Selection (A) / Material		W	D Dowel Hole	Tolerance
	N9				
	A-36	304			
APR	075M	076M	30.0	6 F7	+0.010 / +0.022
	077M	078M	25.0		
	221M	222M	30.0	8 F7	+0.013 / +0.028
	241M	242M	25.0		

N9 (Ø9.0 Through Hole).  
Standard NAAMS specifications are controlled by the NAAMS organization and the latest version of these products will be produced in compliance to: [www.naamsstandards.org](http://www.naamsstandards.org).

Part Number Example

Standard

Part Number

Type Specification

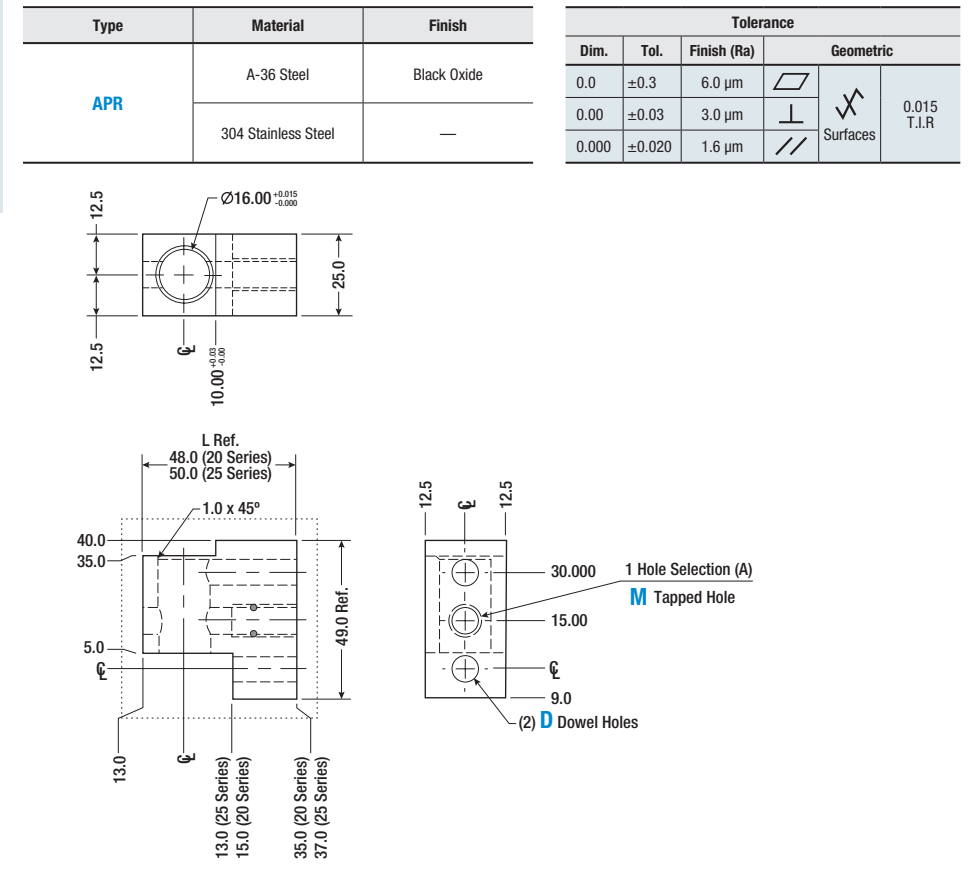
APR - 242M

# Pin Retainers

## Standard L-3 Facehole



3D CAD is available online.



Standard NAAMS (25 mm Series Pin Retainers)					
Type	Hole Selection (A) / Material		W	D Dowel Hole	Tolerance
	M10				
	A-36	304			
APR	020M	021M	25.0	8 H6	+0.000 / +0.009

M10 (M10 x 1.5 Tapped Hole).  
Standard NAAMS specifications are controlled by the NAAMS organization and the latest version of these products will be produced in compliance to: [www.naamsstandards.org](http://www.naamsstandards.org).

Standard NAAMS (20 mm Series Pin Retainers)					
Type	Hole Selection (A) / Material		W	D Dowel Hole	Tolerance
	M8				
	A-36	304			
APR	255M	256M	20.0	8 F7	+0.013 / +0.028

M8 (M8 x 1.25 Tapped Hole).  
Standard NAAMS specifications are controlled by the NAAMS organization and the latest version of these products will be produced in compliance to: [www.naamsstandards.org](http://www.naamsstandards.org).

Part Number Example

Standard

Part Number

Type Specification

APR - 020M