

Tapered Plunging Locating Pin / Feed Fingers (Economy Type)

Stainless Steel / Plastic Type

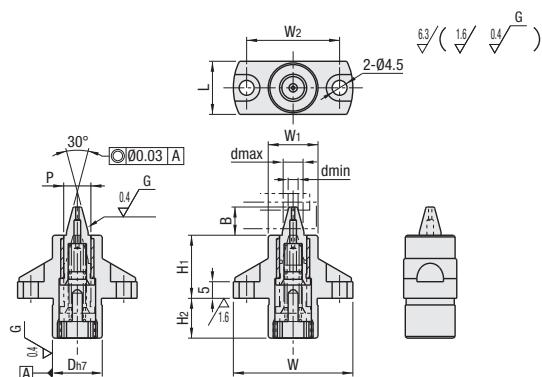
Feature: Tapered section holds a workpiece, which enables positioning without wobbling. ESimilar Products: Flanged Locating Pins (P.1633)

Tapered Plunging Locating Pin



RoHS10

Type	Pin		Body			Spring	Oil-Free Bushing
	Material	Hardness	Material	Hardness	Surface Treatment	Material	Material
PICP	D2 Tool Steel	60-63 HRC	1045 Carbon Steel or Equivalent	23-30 HRC	Electroless Nickel Plating	SWP-B	Special Bronze Casting



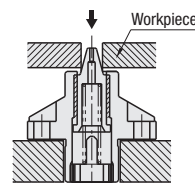
Load Table

Spring	No.6	No.10
Load (N)	6.3	5.8
Spring Constant (N/mm)	1.8	1.4

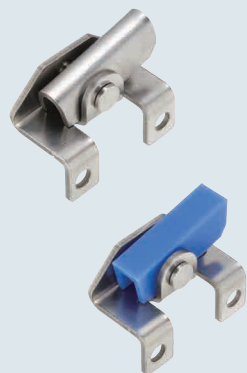
Part Number	Applicable Hole Dia.		D	P	B	H ₁	H ₂	W	W ₁	W ₂	L
	Type	No.									
PICP	6	6	15	8.2	8.5	19	12	36	15	28	16
	10	10	19	12.2	12	24	17	40	19	32	20

Part Number Example: Part Number PICP6

Application Example: The pin sinks and the tapered section holds a workpiece without wobbling. Changeover is not necessary when used within the applicable hole diameter, which enables high productivity and operability. Height Adjusting Blocks (P.1397) can be used together.

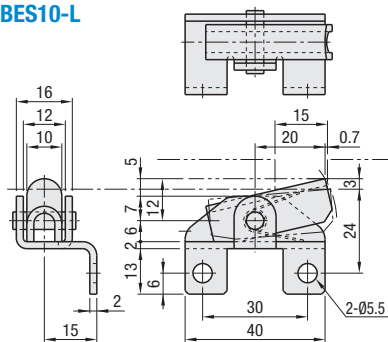


Feed Fingers Economy Type

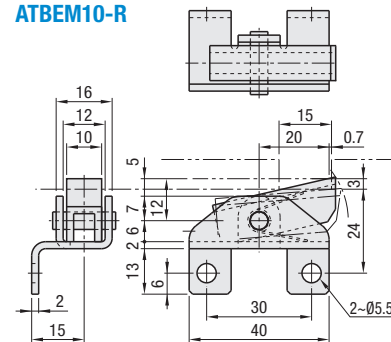


Type	Material			
	Main Body	Claw	Pin	Spring
ATBES	304 Stainless Steel	304 Stainless Steel	304 Stainless Steel	304 Stainless Steel-WPB
ATBEM		MC Nylon		

ATBES10-L



ATBEM10-R



Type	Part Number	No.	Claws Orientation		Load Calculated Value) N		Mass (g)
			L	R	Stroke 3 mm	Stroke 5 mm	
ATBES	10	10	L	Left	8.3	8.9	45
			R	Right			
ATBEM	10	10	L	Left	8.1	8.7	35
			R	Right			

Part Number Example: Part Number - Claw Orientation
ATBES10 - L
ATBEM10 - R

Auto-Latch

Auto-Latch

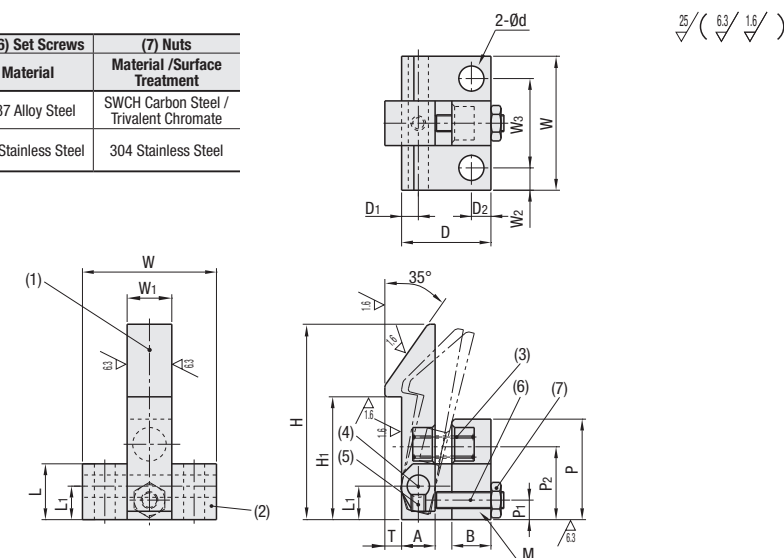


RoHS10

Type	(1) Claw			(2) Base			(3) Spring
	Material	Hardness	Surface Treatment	Material	Hardness	Surface Treatment	Material
ATLAM	1045 Carbon Steel or Equivalent	20-35 HRC	Electroless Nickel Plating	1045 Carbon Steel or Equivalent	—	Electroless Nickel Plating	304 Stainless Steel
ATLAS	304 Stainless Steel	—	—	304 Stainless Steel	—	—	
ATLAN	MC Nylon	—	—	—	—	—	

Other Components

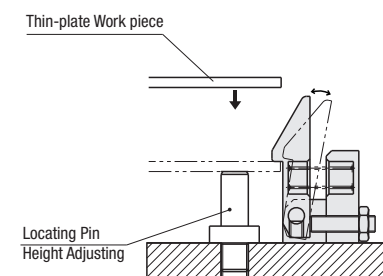
Type	(4) Shafts	(5) (6) Set Screws	(7) Nuts
	Material	Material	Material / Surface Treatment
ATLAM	52100 Bearing Steel	4137 Alloy Steel	SWCH Carbon Steel / Trivalent Chromate
ATLAS	304 Stainless Steel	304 Stainless Steel	304 Stainless Steel
ATLAN	304 Stainless Steel	304 Stainless Steel	304 Stainless Steel



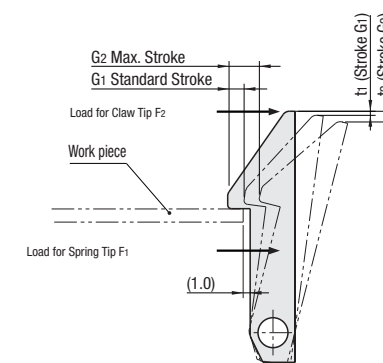
Part Number	Type	No.	H	H ₁	T	W	W ₁	W ₂	W ₃	d	L	L ₁	D	D ₁	D ₂	A	B	P	P ₁	P ₂	M (Coarse)
			ATLAM	25	25	15	2	20	7	3	14	3.5	8	5	14	2.5	3	5	6	15	3.5
ATLAS	35	35	22	3	24	8	4	16	4.5	10	6	16	3	3.5	6	7	18	3.5	13.5	M3	
ATLAN	45	45	30	4	26	10	4	18	4.5	12	7	20	4	4	8	8	22	4.5	17	M4	

Part Number Example: Part Number ATLAM25 ATLAS45

Application Example: Click and latches the workpiece easily at the required position just by lowering the workpiece from above.



Claws Stroke Position Variations



No.	G ₁	G ₂	t ₁	t ₂
25	1	3.2	0.3	1.4
35	2	4.2	0.5	1.4
45	3	6.3	0.5	1.6

*1.0mm clearance is assumed.

Spring Load Table (Calculated Value)

No.	Spring Tip F ₁ (N)			Claw Tip F ₂ (N)		
	Initial Load	Stroke G ₁	Stroke G ₂	Initial Load	Stroke G ₁	Stroke G ₂
25	1.2	1.3	1.7	0.4	0.4	0.5
35	2.0	2.4	2.9	0.5	0.6	0.8
45	3.9	5.1	6.5	1.0	1.3	1.7