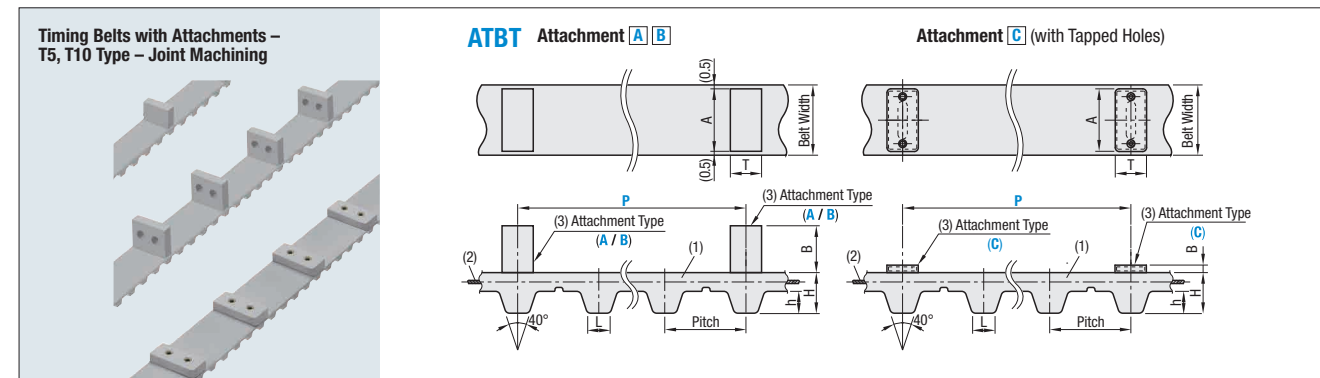


# Timing Belts with Attachments

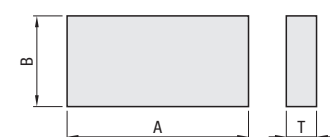
## T5, T10 Type – Joint Machining

Attachments are thermally bonded to the backside of the Timing Belt. It enables a constant pitch conveyance of various work pieces. For Timing Pulleys, refer to **P.1380–1382**.

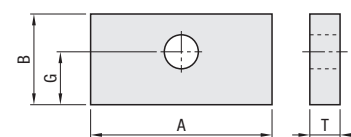


### Attachment Shape Details

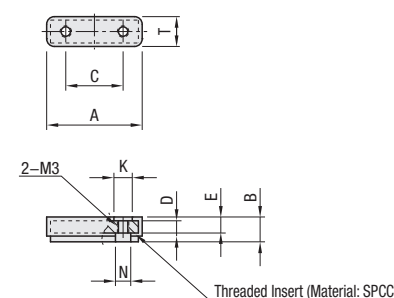
#### Attachment A



#### Attachment B (Belt width 10 and 15mm)



#### Attachment C (with Tapped Holes)



Operating Temperature -20~70°C

Material	
(1) Main Body	Polyurethane (for Joint Process)
(2) Core Wire	Aramid Core Wire
(3) Attachment	Polyurethane (for Joint Process)

Type	Pitch	H	h	L
T5	5	2.2	1.2	1.8
T10	10	4.5	2.5	3.5

#### Attachment A Dimensions

Type	Belt Width (mm)	A	B	T	Belt Unit Mass g/m (Width: 10 mm)	Attach. Mass (g)	Pulley Minimum Number of Teeth
T5	10	9			20.0	0.34	12
	15	14				0.52	
	20	19				0.71	
	25	24				0.89	
T10	15	14			40.0	0.86	14
	20	19				1.17	
	25	24				1.47	
	30	29	15			2.67	
	40	39				3.59	
	50	49	20			6.02	

\*B dimension is a dimension after adhesion.

#### Attachment B Dimensions

Type	Belt Width (mm)	A	B	Through Hole	G	F	T	Belt Unit Mass g/m (Width: 10mm)	Attach. Mass (g)	Pulley Minimum Number of Teeth
T5	10	9	10	3.5	5.5			20.0	0.30	12
	15	14	15	4.5	9				0.72	
	20	19	20	2-4.5	5				0.94	
	25	24	20	2-5.5	13	6			1.61	
T10	15	14	15	4.5	9			40.0	1.19	14
	20	19	20	2-4.5	9				1.55	
	25	24	20	2-5.5	6				2.66	
	30	29	20	2-6.5	13	7			3.15	
	40	39							4.38	
	50	49							5.61	

\*B and G dimensions are dimensions after adhesion.

#### Attachment C Dimensions

Type	Belt Width (mm)	A	B	T	C	D	E	K	N	Belt Unit Mass g/m (Width: 10 mm)	Attach. Mass (g)	Pulley Minimum Number of Teeth
T5	25									40.0	3.9	20
T10	25	6.5	7.8			15.0	3.2	5.0	4.8	4.0		
	30											
	40											
	50											

- Ⓡ The attachment is mounted on the backside above the belt teeth.
- Ⓢ Attachment C is mounted on the center of the belt.
- Ⓣ Joining process reduces allowable tension to approx. 50% of open end belts.
- Ⓤ Adhesion burrs occur at the base of the adhered attachment.

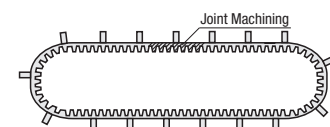


#### Tolerance of Mounting Pitch Attachment (mm)

Mounting Pitch	Tolerance of Mounting Pitch
30-200	±0.5
300-	±1.0

#### Joint Process

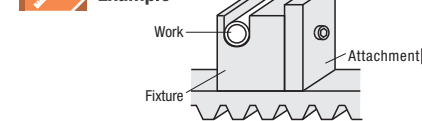
The Open End Belt can be changed to an endless belt by heat-sealing the ends of the Open End Belt.  
Core wires of the joint part are not connected.



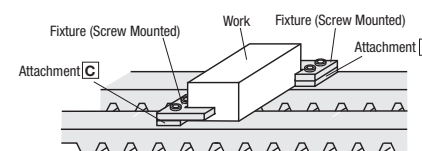
#### Attachment Dimension Tolerance (mm)

Dimensions	Dimension Tolerance
A	±0.5
B	±0.5
T	±0.5
C	±0.1

### Application Example



Attachment B allows mounting of work-piece specific fixtures.



Attachment C allows screw-mounting of fixtures/brackets from above, providing freedom in work-piece heights and shapes.

# Timing Belts with Attachments

## T5, T10 Type – Joint Machining, continued

### Type T5 Pitch: 5 mm

Type	Part Number		Attachment Type	Attachment Mounting Pitch P	Teeth	Circum. Length (mm)
	Belt No.	Belt Nominal Width				
ATBT	700T5	70	A	30	140	700
	750T5	75			150	750
	800T5	80			160	800
	850T5	85			170	850
	900T5	90			180	900
	950T5	95			190	950
	1000T5	100			200	1000
	1050T5	105			210	1050
	1100T5	110			220	1100
	1150T5	115			230	1150
	1200T5	120			240	1200
	1250T5	125			250	1250
	1300T5	130			260	1300
	1350T5	135			270	1350
	1400T5	140			280	1400
	1450T5	145			290	1450
	1500T5	150			300	1500
	1550T5	155			310	1550
	1600T5	160			320	1600
	1650T5	165			330	1650
	1700T5	170			340	1700
	1750T5	175			350	1750
	1800T5	180			360	1800
	1850T5	185			370	1850
	1900T5	190			380	1900
	1950T5	195			390	1950
	2000T5	200			400	2000
	2050T5	205			410	2050
	2100T5	210			420	2100
	2150T5	215			430	2150
	2200T5	220			440	2200
	2250T5	225			450	2250
	2300T5	230			460	2300
	2350T5	235			470	2350
	2400T5	240			480	2400
	2450T5	245			490	2450
	2500T5	250			500	2500
	2550T5	255			510	2550
	2600T5	260			520	2600
	2650T5	265			530	2650
	2700T5	270			540	2700
	2750T5	275			550	2750
	2800T5	280			560	2800
2850T5	285	570	2850			
2900T5	290	580	2900			
2950T5	295	590	2950			
3000T5	300	600	3000			
3050T5	305	610	3050			
3100T5	310	620	3100			
3150T5	315	630	3150			
3200T5	320	640	3200			
3250T5	325	650	3250			
3300T5	330	660	3300			
3350T5	335	670	3350			
3400T5	340	680	3400			
3450T5	345	690	3450			
3500T5	350	700	3500			
3550T5	355	710	3550			
3600T5	360	720	3600			
3650T5	365	730	3650			
3700T5	370	740	3700			
3750T5	375	750	3750			
3800T5	380	760	3800			
3850T5	385	770	3850			
3900T5	390	780	3900			
3950T5	395	790	3950			
4000T5	400	800	4000			

- Ⓡ Attachments are available from one piece.
- Ⓢ Select a mounting pitch for attachment that belt circumference length is divisible by integers.

Part Number Example		Part Number		Attachment Type (A / B / C)		Attachment Mounting Pitch P	
ATBT	1200T10	200	-	A	-	P100	-
ATBT	2450T10	300	-	C	-	P2450	-

- Ⓡ When specifying one attachment, select a mounting pitch of the same number as belt number.
- Ⓢ Select a mounting pitch for attachment that belt circumference length is divisible by integers.

(Ex.)T5 type, when belt circumferential length is 1050 Attachment Mounting Pitch  
 0 1050/30=35 0 1050/50=21 30, 50, 350 is selectable.  
 X 1050/100=10.5 0 1050/350=3 100 is not selectable.

Part Number Alterations	
Part Number	Types of Attachments - P - (NB)
ATBT-1200T10200	- A - P100 - NB

Alteration	Removal of Adhesion Burrs
Code	NB
Spec.	Removes adhesion burrs at the base of attachments

Belt Nominal Width	Attachment Available Sizes		
	A	B	C
150		•	
200	•		
250			
300		•	
400	•		
500			•

Check out [misumiusa.com](http://misumiusa.com) for the most current pricing and lead time.