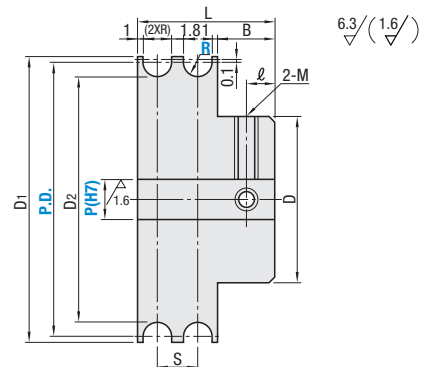


Pulleys for Round Belts

Double



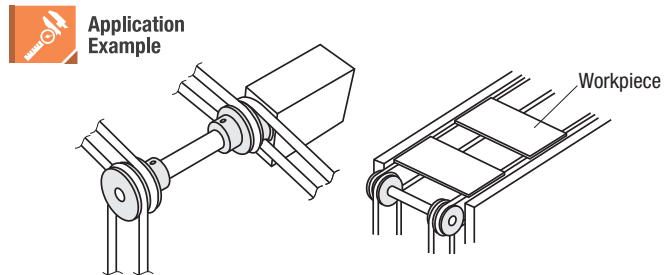
Type	Material	Surface Treatment	Accessories
MBWAC	5052 Aluminum Alloy	Clear Anodize	Set Screws 2 Pcs. (304 Stainless Steel)
MBWS	304 Stainless Steel	—	



Part Number	Type	R	Shaft Bore Specifications, Inner Diameter P (H7) 1 mm Increment	S	D	D ₁	D ₂	L	l	B	M (Coarse)	Accessories Set Screws	Applicable Round Belt Dia.
15	MBWAC	1.1	3-8	4	12	17	13	14	3	5.8	M3	M3 x 3	2
20			4-10		16	22	18						
30			4-12		20	32	28						
20	MBWS	1.6	3-10	5	16	22	17	16	3	5.8	M3	M3 x 3	3
30			5-12		20	32	27						
40			5-12		20	42	37						
45			5-20		30	47	42						
23	MBWAC	2.1	5-12	6	20	25	19	18	3	5.8	M3	M3 x 3	4
28						30	24						
30						32	26						
40						42	36						
45						5-18	25						
48	5-20	30	50	44									
28	MBWS	2.6	5-12	7	20	30	23	20	3	5.8	M3	M3 x 3	5
40						42	35						
50			5-20		30	52	45	22	4	7.8	M4	M4 x 3	
28	MBWAC	3.1	5-12	8	22	30	22	22	3	5.8	M3	M3 x 3	6
38						40	32						
48						50	42						
50						52	44						
60						62	54						
75						77	69						
100						102	94						
50	MBWS	4.1	5-20	10	30	52	42	30	5	9.8	M5	M5 x 4	8
60						62	52						
100						102	92						
60	MBWS	5.1	5-20	12	34	62	50	34	5	9.8	M5	M5 x 4	10
100						102	90						
140						142	130						

For MBWAC, shaft bores may or may not have surface treatment.

Part Number Example
 Part Number - R - Shaft Bore Specifications, Inner Diameter
 MBWS30 - 1.6 - P5



Part Number Alterations
 Part Number - R - Shaft Bore Specifications, Inner Diameter - (DC)
 MBWA40 - 2.6 - P8 - DC

Alterations	Outer Diameter Cut										
Code	DC										
Spec.	Reduces D ₁ diameter by cutting. Ordering Code: DC <table border="1"> <thead> <tr> <th>Available R</th> <th>DC</th> </tr> </thead> <tbody> <tr> <td>1.1</td> <td>P.D.+0.8</td> </tr> <tr> <td>1.6</td> <td>P.D.+1.2</td> </tr> <tr> <td>2.1</td> <td>P.D.+1.6</td> </tr> <tr> <td>2.6</td> <td>P.D.+1.8</td> </tr> </tbody> </table>	Available R	DC	1.1	P.D.+0.8	1.6	P.D.+1.2	2.1	P.D.+1.6	2.6	P.D.+1.8
Available R	DC										
1.1	P.D.+0.8										
1.6	P.D.+1.2										
2.1	P.D.+1.6										
2.6	P.D.+1.8										

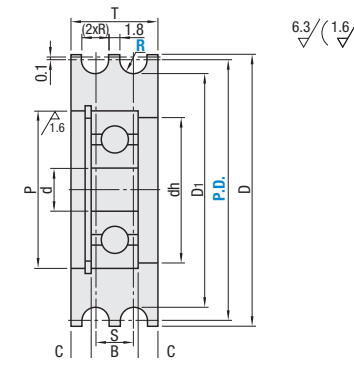
Applicable only to products with R 1.1, 1.6, 2.1 and 2.6.
 Surface treatment may not be applied to the machined area.

Idlers for Round Belts

Double



Type	Material		Surface Treatment	Accessories
	Bearing	Main Body		
MBXAC	Stainless Steel	5052 Aluminum Alloy	Clear Anodize	Retaining Ring (304 Stainless Steel)
MBXS		304 Stainless Steel	—	



Part Number	Type	R	S	D	P	dh	D	D ₁	T	B	C	Bearing	Applicable Round Belt Dia.
15	MBXAC	1.1	4	3	10	8	17	13	9	4	2.5	623ZZ	2
20				4	13	11	22	18	10	5		624ZZ	
30				6	19	16	32	28	11	6		626ZZ	
20	MBXS	1.6	5	4	13	11	22	17	11	5	3	624ZZ	3
30				6	19	16	32	27	6	2.5	626ZZ		
40				10	26	23	42	37	14	8	3	6000ZZ	
45				47	42								
23	MBXAC	2.1	6	6	15	13	25	19	13	5	4	696ZZ	4
28					19	16	30	24		6	3.5	626ZZ	
30					32	26	32	26					
40					42	36	42	36					
45					47	41	47	41		14	8	3	
48	50	44	50	44									
28	MBXS	2.6	7	8	19	16	30	23	15	6	4.5	698ZZ	5
40					26	23	42	35	8	4	6000ZZ		
50					32	27	52	45	10	3	6201ZZ		
28	MBXAC	3.1	8	6	19	16	30	22	17	6	5.5	626ZZ	6
38					26	23	40	32	18	10	4	6201ZZ	
48					50	42	50	42					
50					52	44	52	44					
60					62	54	62	54					
75					77	69	77	69					
100					102	94	102	94					
50	MBXS	4.1	10	12	32	27	52	42					21
60					35	30	62	52	11	5	6202ZZ		
100					42	30	102	92					
60	MBXAC	5.1	12	15	35	30	62	50	25	11	7	6202ZZ	10
100					42	30	102	90					
140					142	130	142	130					

For Detailed Bearing Dimensions, refer to P.1018-1028.

Part Number Example
 Part Number - R
 MBXS30 - 1.6

Part Number Alterations
 Part Number - R - (DC)
 MBXA40 - 2.6 - DC

Alterations	Outer Diameter Cut										
Code	DC										
Spec.	Reduces D diameter by cutting. Ordering Code: DC <table border="1"> <thead> <tr> <th>Available R</th> <th>DC</th> </tr> </thead> <tbody> <tr> <td>1.1</td> <td>P.D.+0.8</td> </tr> <tr> <td>1.6</td> <td>P.D.+1.2</td> </tr> <tr> <td>2.1</td> <td>P.D.+1.6</td> </tr> <tr> <td>2.6</td> <td>P.D.+1.8</td> </tr> </tbody> </table>	Available R	DC	1.1	P.D.+0.8	1.6	P.D.+1.2	2.1	P.D.+1.6	2.6	P.D.+1.8
Available R	DC										
1.1	P.D.+0.8										
1.6	P.D.+1.2										
2.1	P.D.+1.6										
2.6	P.D.+1.8										

Applicable only to products with R 1.1, 1.6, 2.1 and 2.6.
 Surface treatment may not be applied to the machined area.