

Guide Rail Brackets

Standard Type

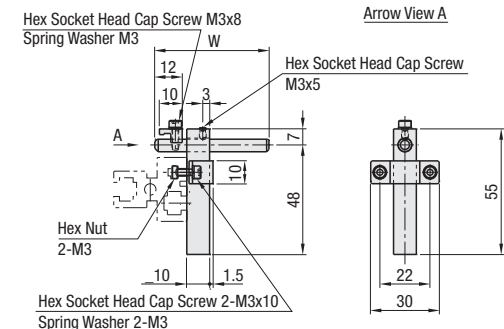
Conveyor Guide Rail Brackets
Standard Type

CGK
(W=50 / 60)

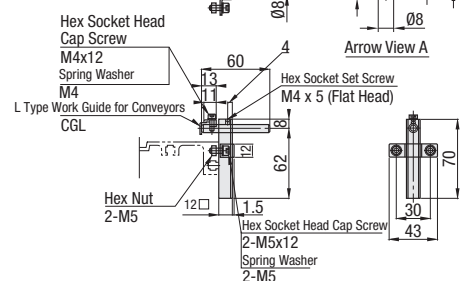
CGKL
(W=100)



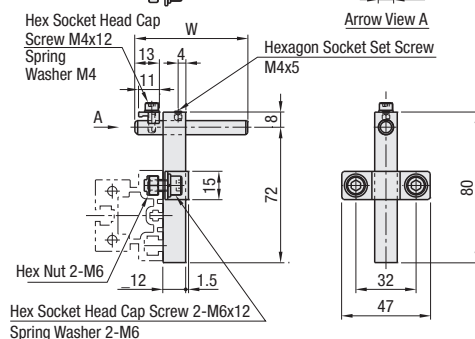
No.55



No.70



No.80



Materials: 304 Stainless Steel

ⓘ Number 55-80 have different bolt size for the conveyor mount part. Select an appropriate bolt according to the conveyor you are using.

RoHS 10

Part Number		W
Type	No.	
CGK W=50 / 60	55	50
	70	60
	80	60
CGKL W=100	55	100
	70	100
	80	100

Part Number Example

Part Number	CGK80
-------------	-------

Part Number Alterations

Part Number	CGK	-	No.	70	-	(CL)	CL
-------------	-----	---	-----	----	---	------	----

Alterations	Code	Spec
Change to Product with Clamp Lever 	CL	Hex socket set screws are replaced with the clamp lever (Orange, CLDMC4-8-M equivalent). ⊗ Not applicable to CGK55 / CGKL55

Guide Rail Brackets

Offset Type

Conveyor Guide Rail Brackets
Offset Type

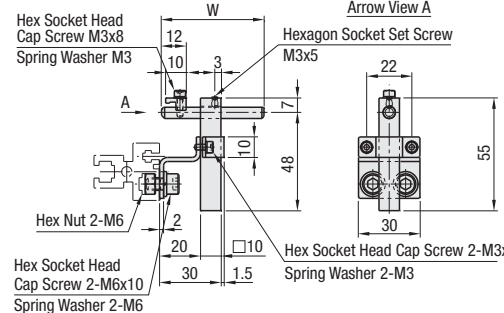
CGH
(W=50 / 60)

CGHL
(W=100)

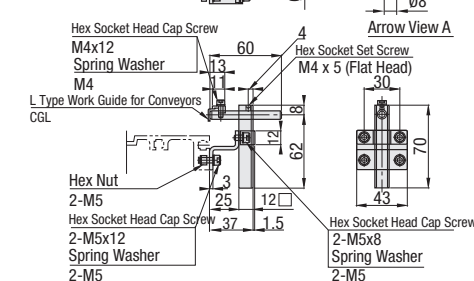


RoHS 10

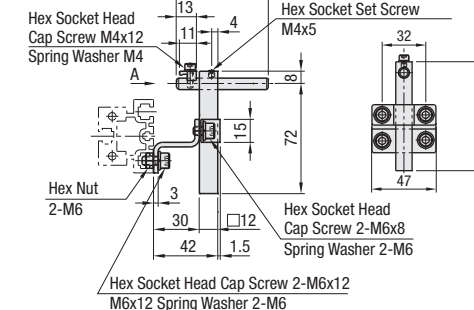
No.55



No.70



No.80



Material: 304 Stainless Steel

ⓘ Number 55-80 have different bolt size for the conveyor mount part. Select an appropriate bolt according to the conveyor you are using.

Part Number		W
Type	No.	
CGH W=50 / 60	55	50
	70	60
	80	60
CGHL W=100	55	100
	70	100
	80	100

Part Number Example

Part Number	CGH55
-------------	-------

Part Number Alterations

Part Number	CGH	-	No.	70	-	(CL)	CL
-------------	-----	---	-----	----	---	------	----

Alterations	Code	Spec
Change to Product with Clamp Lever 	CL	Hex socket set screws are replaced with the clamp lever (Orange, CLDMC4-8-M equivalent). ⊗ Not applicable to CGH55 / CGHL55

