

Pipe Rollers with Shafts

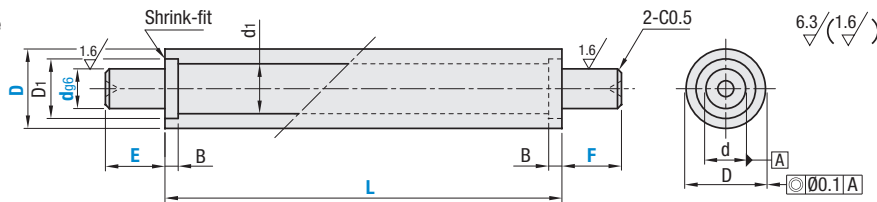
Straight / Both Ends Tapped / Both Ends Retaining Ring Groove Type (L Dimension Up to 800 mm)

Feature: With factory mounted shafts and ready to use out-of-box.

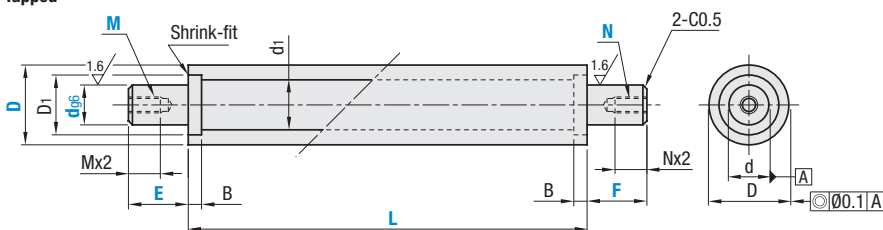
Pipe Rollers with Shafts

Type			Material	Surface Treatment
Straight	Both Ends Tapped	Both Ends Retaining Ring Groove		
ROLJ	ROLJM	ROLJT	Steel	Electroless Nickel Plating

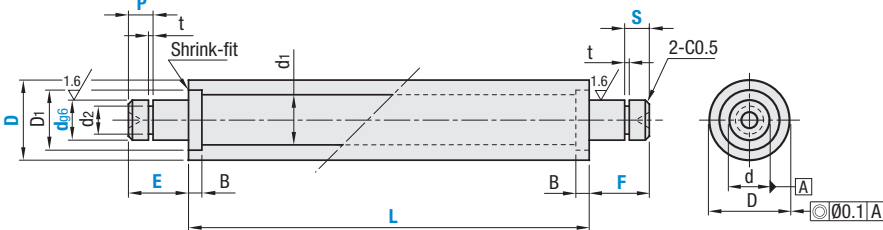
Straight Type ROLJ



Both Ends Tapped ROLJM



Both Ends Retaining Ring Groove ROLJT



The end surfaces turn brown by shrink-fit process.

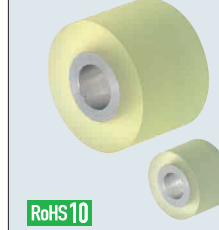
Part Number Type	D	d _{gs}	L 10mm Increment	E / F 1mm Increment	M(Coarse) / N(Coarse)	P, S 1mm Increment	d _i	D ₁	B	t Tolerance	d2 Tolerance	Applicable Retaining Ring
ROLJ ROLJM ROLJT	50	15	100-800	5-45	5 6	5≤P<E-5 5≤S<F-5	49.5	53	30	1.35	19	JIS C Type 20
		20		5-60	5 6 8 10 12					1.35	23.9	JIS C Type 25
		25		5-75	5 6 8 10 12 16					1.35	19	JIS C Type 20
	60	20		5-60	5 6 8 10 12					1.35	19	JIS C Type 20
		25		5-75	5 6 8 10 12 16					1.35	23.9	JIS C Type 25
		30		5-90	8 10 12 16 20					1.65	28.6	JIS C Type 30
	80	25		5-75	5 6 8 10 12 16					1.35	23.9	JIS C Type 25
		30		5-90	8 10 12 16 20					1.65	28.6	JIS C Type 30
		35		5-100	8 10 12 16 20 24					1.65	33	0 -0.25

Part Number Example	Part Number	d	L	E	F	M	N	P	S
Straight	ROLJ60	20	590	E30	F30				
Both Ends Tapped	ROLJM80	30	720	E20	F20	M12	N12		
Both Ends Retaining Ring Groove	ROLJT50	25	850	E40	F42			P15	S35

Urethane Rollers with Collars / Knurled Urethane Rollers

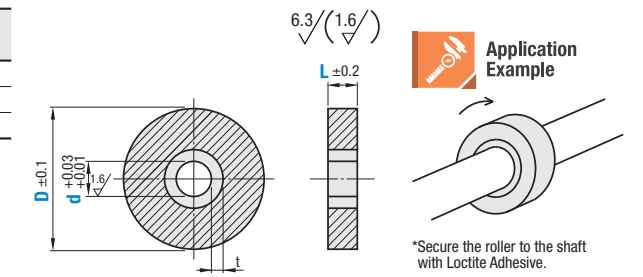
Set Screw Type

Urethane Rollers with Collars



Type	Material		Hardness
	Core	Lining	
UMC	Aluminum Alloy	Urethane (Natural Color)	Shore A90
UMCM			Shore A70
UMCL			Shore A50

Urethane is baked on the outer circumference of the core material.



Part Number Type	D	d Selection								L Selection					t		
		3	4	5	6	8	10	12	15	5	10	15	20	25		30	
UMC	10	3								5	10	15	20	25	30	2	
	12	3							5	10	15	20	25	30			
	13	4							5	10	15	20	25	30			
UMCM	15		5						5	10	15	20	25	30	40	50	3
	16		5	6					5	10	15	20	25	30	40	50	
	20		5	6	8				10	15	20	25	30	40	50		
UMCL	25		6	8	10				10	15	20	25	30	40	50	4	
	30		8	10	12	15			10	15	20	25	30	40	50		
	35		8	10	12	15			10	15	20	25	30	40	50		
	40		8	10	12	15			10	15	20	25	30	40	50		
	45		10	12	15				10	15	20	25	30	40	50		
	50		10	12	15				10	15	20	25	30	40	50		
	55		10	12	15				15	20	25	30	40	50			
	60		10	12	15				20	25	30	40	50				
70		12	15	20				20	25	30	40	50					
80		12	15	20				20	25	30	40	50					

Part Number Example	Part Number	d	L
	UMC30	10	20

Part Number Alterations	Part Number	d	L	(HRC)
	UMC30	10	20	HRC
	UMCL80	15	50	MC

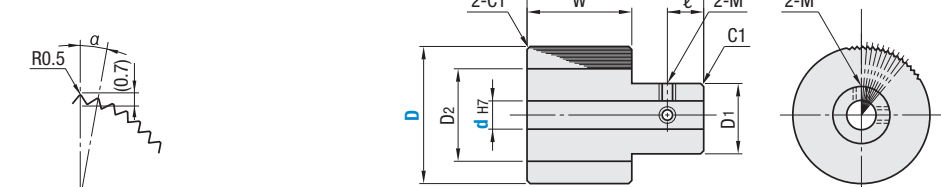
Alteration Code	Parallel Knurls	Tapping
	HRC	MC
Spec.	Straight-line knurling is applied to Roller surfaces.	Adds 2 tapped holes at 90° Ordering Code: MC ⊗ Applicable to D dim. 20 or more. ⊗ Not valid for t2

Knurled Urethane Rollers - Set Screw Type



Type	Material		Hardness
	Core	Lining	
UMKH	Aluminum Alloy	Urethane (Natural Color)	Shore A90
UMKM			Shore A70
UMKL			Shore A50

Urethane is baked on the outer circumference of the core material.



Part Number Type	D	d _{tr}				α°	No. of Teeth	D ₁	D ₂	W	L	ℓ	M
		4	5	6	8								
UMKH Shore A90 UMKM Shore A70 UMKL Shore A50	15	4	5			10	36	8	8	10	20	5	M3
	20	4	5	6		7.5	48	10	15				
	25		6	8		6	60	12	15	20	35	7.5	M4
	30		8	10		5	72	16	20				
	40		8	10	12	3.75	96	18	22				
50		8	10	12	3	120	18	22					

Part Number Example	Part Number	d
	UMKM25	6