

# Rollers / Aluminum Rollers

## Press-Fit Bearing Type Straight

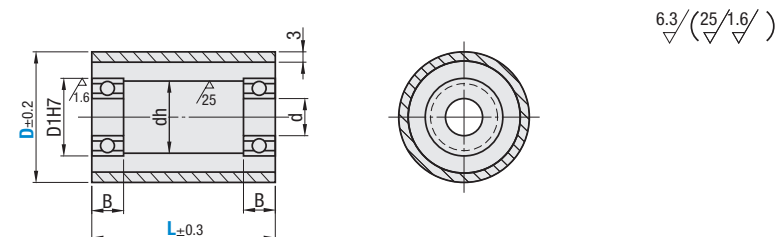
### Rollers – Press-Fit Bearing Type Straight



RoHS 10

Type	Material		Hardness	Bearing
	Core	Urethane / Plastic		
RORUSP	304 Stainless Steel	Urethane (Natural Color)	Shore A90	Steel
RORUAP	Aluminum Alloy			
RORMSP	304 Stainless Steel	Foam Urethane (Green)	Shore A65	
RORMAP	Aluminum Alloy			
RORSSP	304 Stainless Steel	Chloroprene Rubber Sponge	Shore A25	
RORSAP	Aluminum Alloy			

Core material is press fit into Urethane, Foam Urethane and Chloroprene Rubber Sponge.



Type	D	L Selection					d	D <sub>1</sub> (mm)	dh	B	Bearing
		20	25	30	40	50					
Urethane RORUSP RORUAP	25	20	25	30	40	50	6	15	10	5	B696ZZx2
	30	20	25	30	40	50	8	19	15	6	B698ZZx2
Foam Urethane RORMSP RORMAP	35	25	30	40	50	10	22	18	6	B690ZZx2	
	40	25	30	40	50	12	28	24	8	B6001ZZx2	
	50	25	30	40	50	15	32	28	9	B6002ZZx2	

Part Number Example: RORUSP25 - 30

Part Number Alterations: RORUSP25 - 30 - UDC

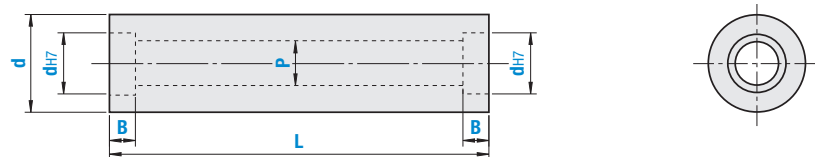
Alterations	Code	Spec.
Changed to Antistatic Urethane (Urethane Color: Gray)	UDC	Urethane Shore A90 is changed to Antistatic Urethane. Ordering Code: UDC Specific Volume Resistivity $2.1 \times 10^8 \Omega\text{cm}$ Surface Resistivity $4.0 \times 10^8 \Omega$ (Temperature 30°C/Humidity 60%) ⊗ Not applicable to foam urethane.
Bearing Material	SB	Bearing material is changed to stainless steel. ⊗ Chloroprene Rubber Sponge is not applicable.

### Aluminum Rollers



RoHS 10

Type	Material	Surface Treatment
AROE	Aluminum Alloy	Clear Anodize



Type	D	L 1mm Increment	d 1mm Increment	B 1mm Increment	P 1mm Increment
AROE	30	50-300	19-55 (d≤D-5)	4-15	15-53 (P≤d-2)
	40				
	50				
	60				

Part Number Example: AROE30 - 100 - 24 - B6 - P22

# Pipe Rollers

## Straight Type (L=100-500)

### Pipe Rollers – Straight Type

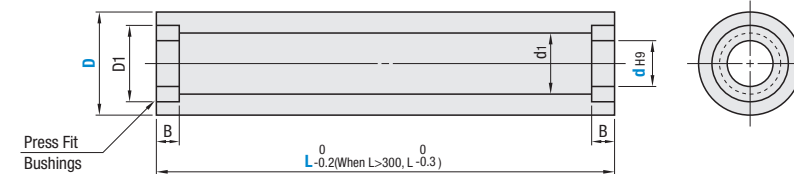


RoHS 10

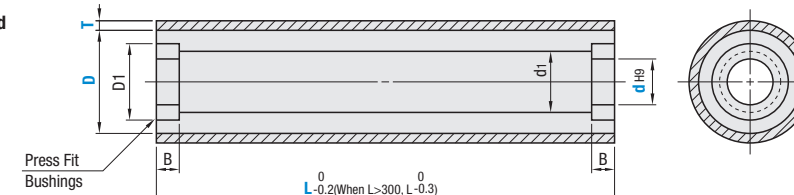
Type	Material		Surface Treatment (Lining)	Hardness
	Core	Urethane / Plastic		
ROLLA	Aluminum Alloy	Urethane (Natural Color)	Clear Anodize	—
ROLAU			Shore A90	
ROLAG			Shore A70	
ROLLM	Steel	Electroless Nickel Plating	—	—
ROLLS	304 Stainless Steel	—	—	—

- Surface treatment is not applied to shaft end and I.D.
- Urethane is baked on the outer circumference of the core material.
- Since the drawing surface of pipe is unpolished, the inner diameter d<sub>1</sub> is distorted to some extent.

#### Core Only



#### Urethane Baked



O.D. of this product is D+2T. (Different from other rollers)

Type	D	Urethane Thickness T	d <sub>10</sub>	L			d <sub>1</sub>			D <sub>1</sub>	B
				100	150	200	Aluminum Alloy	Steel	Stainless Steel		
Core Only ROLLA ROLLM ROLLS	20	3	6	100	150	200	11	12	13	15	10
	30		8				15	15.8	18	22	
	40		10				17	22.7	22	33	
			12				17	30	28	40	
	Urethane Baked ROLAU ROLAG		50				10	15	100	150	
20		25	35	40							
25		25	40	45							
30		25	45	50							
80	30	35	41	-	-	55	15				

### Core Only

Type	D	Available Types								
		L100	L150	L200	L250	L300	L350	L400	L450	L500
ROLLA (Aluminum)	20	•	•	•	•	•	•	•	•	•
	30	•	•	•	•	•	•	•	•	•
	40	•	•	•	•	•	•	•	•	•
	50	•	•	•	•	•	•	•	•	•
	60	•	•	•	•	•	•	•	•	•
ROLLM (Steel)	20	•	•	•	•	•	•	•	•	•
	30	•	•	•	•	•	•	•	•	•
	40	•	•	•	•	•	•	•	•	•
ROLLS (Stainless Steel)	20	•	•	•	•	•	•	•	•	•
	30	•	•	•	•	•	•	•	•	•
	40	•	•	•	•	•	•	•	•	•

### Urethane Baked (Core Material: Aluminum)

D	T	Available Types								
		ROLAU (Available Types x 1.0)				ROLAG (Available Types x 1.1)				
		L100	L150	L200	L250	L300	L350	L400	L450	L500
20	3	•	•	•	•	•	•	•	•	•
		•	•	•	•	•	•	•	•	•
		•	•	•	•	•	•	•	•	•
		•	•	•	•	•	•	•	•	•
		•	•	•	•	•	•	•	•	•
30	5	•	•	•	•	•	•	•	•	•
		•	•	•	•	•	•	•	•	•
		•	•	•	•	•	•	•	•	•
		•	•	•	•	•	•	•	•	•
		•	•	•	•	•	•	•	•	•
40	10	•	•	•	•	•	•	•	•	•
		•	•	•	•	•	•	•	•	•
		•	•	•	•	•	•	•	•	•
		•	•	•	•	•	•	•	•	•
		•	•	•	•	•	•	•	•	•

Urethane may discolor over time, but there is no effect on physical properties.