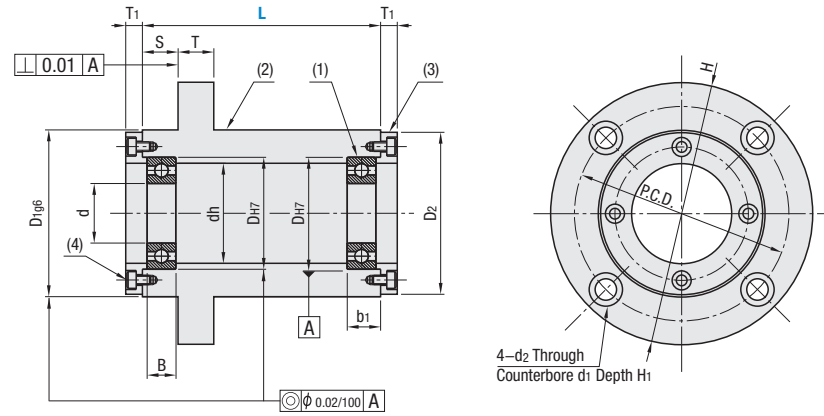


Bearings with Housings

Outer Ring Fixed, with Pilot

Bearings with Housings – Outer Ring Fixed, with Pilot

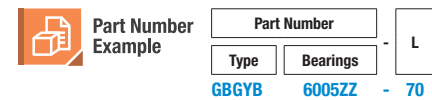
Type	(1) Bearing	(2) Housing	(3) Outer Ring Cover	(4) Outer Ring Cover Mounting Screws	
	Material	Material	Surface Treatment	Material	Surface Treatment
GBGYB	52100 Bearing Steel	1045 Carbon Steel or Equivalent	Black Oxide	4137 Alloy Steel or Equivalent	Black Oxide
GBGY			Electroless Nickel Plating	304 Stainless Steel	—



Bearing Accuracy JIS B 1514 Class 0

RoHS 10

Part Number		L Selection	S	d	D ₁₉₆	Tolerance	B	b ₁	H	D ₂	T	dh	D ₁₉₆	Tolerance	P.C.D.	d ₁	d ₂	H ₁	T ₁	
Type	Bearing No.																			
GBGYB Black Oxide	6902ZZ	40 60 80	10	15	28	+0.021 0	7	9	70	43	12	25	45	-0.009 -0.025	57	11	6.6	6.5	6	
	6002ZZ	50 70 90			32	+0.025 0	9	11	75	48		62								
	6903ZZ	50 70 90			30	+0.021 0	7	9	70	43		57								
	6003ZZ	60 80 100			35	+0.025 0	10	12	75	48		62								
GBGY Electroless Nickel Plating	6904ZZ	60 80 100	15	20	37	+0.025 0	9	11	87	53	15	34	55	-0.010 -0.029	70	14	9	8.5	7	
	6004ZZ	70 100			42	+0.025 0	12	14	92	58		75								
	6005ZZ	70 100			25	47	13	15	120	78		80								
	6006ZZ	70 100			30	55	13	15	120	78		100								
	6007ZZ	80 100			35	62	14	16	126	84		106								
	6008ZZ	80 100			40	68	15	17	140	92		116								
							14	16	126	84		106	17.5		11				10.5	8
							40	68	15	17		140	92		20				60	95

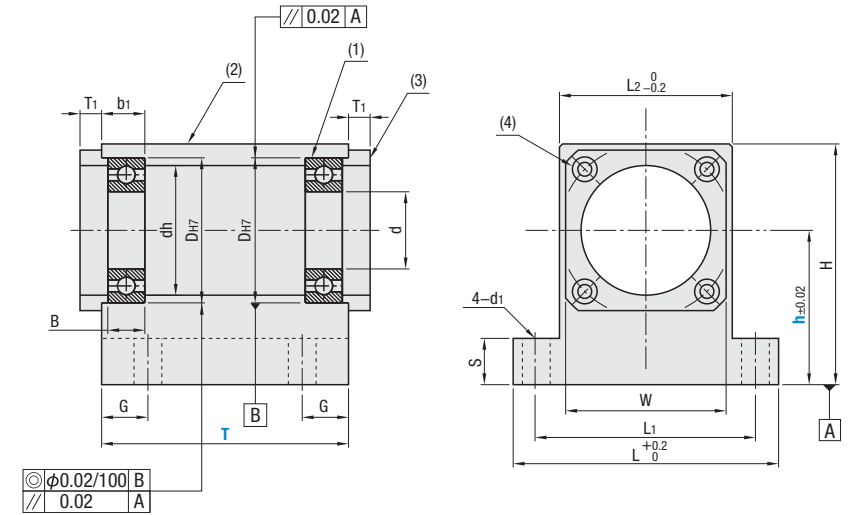


Bearings with Housings

Outer Ring Fixed, T-Shaped

Bearings with Housings – Outer Ring Fixed, T-Shaped

Type	(1) Bearing	(2) Main Housing	(3) Outer Ring Cover	(4) Outer Ring Cover Mounting Screws	
	Material	Material	Surface Treatment	Material	Surface Treatment
GBGWB	52100 Bearing Steel	1045 Carbon Steel or Equivalent	Black Oxide	4137 Alloy Steel or Equivalent	Black Oxide
GBGW			Electroless Nickel Plating	304 Stainless Steel	—



Bearing Accuracy JIS B 1514 Class 0

RoHS 10

Part Number		T	h	d	D ₁₉₆	Tolerance	B	b ₁	H	dh	L	L ₁	L ₂	S	G	W	d ₁	T ₁	
Type	Bearing No.																		
GBGWB Black Oxide	6902ZZ	30 50	30 40 50	15	28	+0.021 0	7	9	h+18	25	60	48	36	12	7.5	34	6.6	6	
	6002ZZ	40 60	30 40 50		32	+0.025 0	9	11	h+20	28	64	52	40						38
	6903ZZ	40 60	30 40 50		30	+0.021 0	7	9	h+19	27	62	50	38						36
	6003ZZ	40 60	30 40 50		35	+0.025 0	10	12	h+22	31	68	56	44						42
GBGW Electroless Nickel Plating	6904ZZ	40 60	40 50 60	20	37	+0.025 0	9	11	h+23	34	76	61	46	15	10	44	9	7	
	6004ZZ	50 80	40 50 60		42	+0.025 0	12	14	h+25	36	80	65	50						48
	6005ZZ	50 80	50 60		25	47	12	14	h+28	41	86	71	56						54
	6006ZZ	50 80	50 60		30	55	+0.030 0	13	15	h+32	48	104	84						64

