

# Bearings with Housings

## Configurable Length Long Double Bearings, Unretained

Bearings with Housings – Configurable Length Long Double Bearings, Unretained

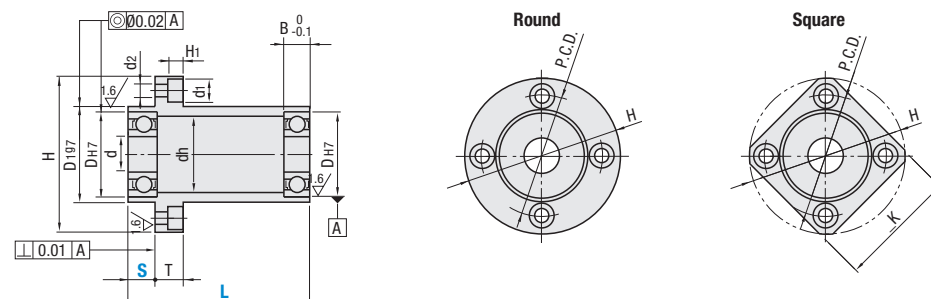


RoHS 10

Type		Material		Surface Treatment
Round	Square	Bearings	Housing	Housing
BGFRLB	—	Steel	1045 Carbon Steel or Equivalent	Black Oxide
BGFRL	BGFSL			Electroless Nickel Plating
SBGFRL	—	Stainless Steel	304 Stainless Steel or Equivalent	—

\* Bearings with Rubber Seals (V V and DD) are all made of steel.

6.3/(1.6/)



Bearing Accuracy JIS B 1514 Class 0

Type	Part Number	Seal	1mm Increment		d	D <sub>17</sub>	Tolerance	B	H	T	dh	D <sub>17</sub>	Tolerance	P.C.D.	K	d <sub>1</sub>	d <sub>2</sub>	H <sub>1</sub>
			L	S														
Round BGFRLB BGFRL SBGFRL	608	ZZ Double Shielded	51-100	5-85	8	22	+0.021 0	7	47	8	18	27	-0.007 -0.028	37	36	8	4.5	4.1
	628		51-100	10-80	24	30		40	37									
	6900		61-120	5-105	22	19		27	37		36							
	6000		61-120	10-100	26	22		32	42		39							
	6200		61-120	15-95	30	24		36	46		42							
	6901		61-120	10-100	24	21		30	40		38							
	6001		61-120	10-100	28	24		34	44		40							
	6201		71-140	15-115	32	26		38	48		43							
	6902		71-140	10-115	28	25		35	47		45							
	6002		71-140	15-115	32	28		38	50		46							
Square BGFSL	6202	*VV Non-contact Rubber Sealed	71-140	15-115	15	32	-0.009 -0.034	9	62	10	28	38	-0.010 -0.040 -0.009 -0.034	54	49	9.5	5.5	5.1
	6904		71-140	15-110	35	11		66	54		49							
	6004		81-160	20-125	37	9		72	59		54							
	6204		81-160	20-125	42	12		77	64		59							
	6905		71-140	20-117	42	9		77	64		59							
	6005		81-160	20-137	47	12		88	72		67							
	6205		81-160	20-137	52	15		94	78		72							
	6906		71-140	20-117	47	9		88	72		67							
	6006		81-160	20-137	55	13		96	80		73							
	6206		121-160	20-137	62	16		104	88		79							
6007	121-160	20-137	35	62	14	104	88	79										

Bearing No.	Seal	Available Types			
		Round	Square	Round	Square
608	ZZ	BGFRLB	BGFRL	SBGFRL	BGFSL
628		BGFRLB	BGFRL	SBGFRL	BGFSL
6900		BGFRLB	BGFRL	SBGFRL	BGFSL
6000		BGFRLB	BGFRL	SBGFRL	BGFSL
6200		BGFRLB	BGFRL	SBGFRL	BGFSL
6901		BGFRLB	BGFRL	SBGFRL	BGFSL
6001		BGFRLB	BGFRL	SBGFRL	BGFSL
6201		BGFRLB	BGFRL	SBGFRL	BGFSL
6902		BGFRLB	BGFRL	SBGFRL	BGFSL
6002		BGFRLB	BGFRL	SBGFRL	BGFSL
6202	VV	BGFRLB	BGFRL	SBGFRL	BGFSL
6904		BGFRLB	BGFRL	SBGFRL	BGFSL
6004		BGFRLB	BGFRL	SBGFRL	BGFSL
6204		BGFRLB	BGFRL	SBGFRL	BGFSL
6905		BGFRLB	BGFRL	SBGFRL	BGFSL
6005		BGFRLB	BGFRL	SBGFRL	BGFSL
6205		BGFRLB	BGFRL	SBGFRL	BGFSL
6906		BGFRLB	BGFRL	SBGFRL	BGFSL
6006		BGFRLB	BGFRL	SBGFRL	BGFSL
6206		BGFRLB	BGFRL	SBGFRL	BGFSL
6007	DD	BGFRLB	BGFRL	SBGFRL	BGFSL
6204		BGFRLB	BGFRL	SBGFRL	BGFSL
6905		BGFRLB	BGFRL	SBGFRL	BGFSL
6005		BGFRLB	BGFRL	SBGFRL	BGFSL
6205		BGFRLB	BGFRL	SBGFRL	BGFSL
6906		BGFRLB	BGFRL	SBGFRL	BGFSL
6006		BGFRLB	BGFRL	SBGFRL	BGFSL
6206		BGFRLB	BGFRL	SBGFRL	BGFSL
6007		BGFRLB	BGFRL	SBGFRL	BGFSL

Part Number Example

Type	Bearings	Seal	L	S
BGFRLB	608	ZZ	70	S20
BGFSL	6202	VV	80	S30

Part Number Alterations

Part Number	L	S	(NA)
BGFRLB600ZZ	80	S25	NA

Alteration	Bearings Not Assembled
Code	NA
Spec.	Bearings are shipped unassembled to the housing.

# Low Dust Raise Greased Bearings with Housings

## Single Bearings

Low Dust Raise Greased Bearings with Housings – Single Bearings

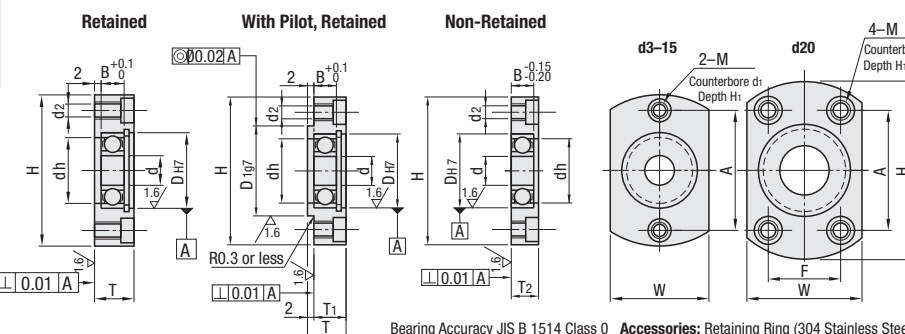


RoHS 10

Retained	With Pilot, Retained	Unretained	Material		Surface Treatment
			Bearings	Housing	Housing
S-SBACA	S-SBACR	S-SBACN	Stainless Steel	2000 Series Aluminum Alloy	Clear Anodize
S-SBGCA	S-SBGCR	S-SBGCN		304 Stainless Steel or Equivalent	—

Ⓢ For Non-Retained Type, bearing may protrude 0.1–0.2 mm due to negative tolerance of B dimension.  
Ⓢ Mounting holes are tapped and counterbored so the housing can be mounted from either side.

6.3/(1.6/)



Bearing Accuracy JIS B 1514 Class 0 Accessories: Retaining Ring (304 Stainless Steel)

Part Number	Type	Bearing No.	d	D <sub>17</sub>	Tolerance	B	H	W	T	T <sub>1</sub>	T <sub>2</sub>	dh	D <sub>17</sub>	Tolerance	A	F	M (Coarse) (d <sub>2</sub> )	d <sub>1</sub>	H <sub>1</sub>					
																				L	S			
Retained S-SBACA S-SBGCA		623ZZ	3	10	+0.015 0	4	33	16	9	7	6	7	14	-0.006 -0.024	24	—	M4 (3.3)	6.5	3.4					
		624ZZ	4	13	5	35	18	10	8	7	9	17	26											
		605ZZ	5	14	5	36	20	10	8	7	10	18	26											
		625ZZ	5	16	5	38	22	10	8	7	12	20	28											
		606ZZ	6	17	6	39	23	11	9	8	13	21	29											
		608ZZ	8	22	7	45	29	12	10	9	18	27	35											
		6900ZZ	22	6	45	29	11	9	8	19	27	35	35											
		6000ZZ	26	8	50	34	13	11	10	22	32	40	40											
		6200ZZ	30	9	54	38	14	12	11	24	36	44	44											
		6901ZZ	24	6	48	31	11	9	8	21	30	38	38											
With Pilot, Retained S-SBACR S-SBGCR		6001ZZ	10	26	+0.021 0	8	50	34	13	11	10	22	32	-0.009 -0.034 -0.007 -0.028	42	—	M5 (4.3)	8	4.4					
		6201ZZ	12	28	6	48	31	11	9	8	21	30	38											
		6002ZZ	12	28	8	52	36	13	11	10	24	34	42											
		6202ZZ	12	32	10	56	40	15	13	12	26	38	46											
		6902ZZ	15	28	+0.025 0	7	57	37	12	10	9	25	35		-0.009 -0.034					45	—	M6 (5.2)	9.5	5.4
		6002ZZ	15	32	9	60	40	14	12	11	28	38	52											
		6202ZZ	15	35	11	64	44	17	15	13	29	42	52											
		6904ZZ	37	9	69	47	15	13	11	34	45	51	24											
		6004ZZ	42	12	77	54	18	16	14	36	50	56	32											
		6204ZZ	47	14	81	58	20	18	16	40	54	59	34											
6906ZZ	47	9	88	72	67	72	67	14	9	8.1														
6006ZZ	55	13	96	80	73	88	79																	
6206ZZ	62	16	104	88	79																			
6007ZZ	62	14	104	88	79																			

Bearing No.	Available Types					
	Retained		Pilot, Retained		Non-Retained	
	S-SBACA	S-SBGCA	S-SBACR	S-SBGCR	S-SBACN	S-SBGCN
623ZZ	•	—	•	—	•	—
624ZZ	•	—	•	—	•	—
605ZZ	•	—	•	—	•	—
625ZZ	•	•	•	•	•	•
606ZZ	•	•	•	•	•	•
608ZZ	•	•	•	•	•	•
6900ZZ	•	•	•	•	•	•
6000ZZ	•	•	•	•	•	•
6200ZZ	•	•	•	•	•	•
6901ZZ	•	•	•	•	•	•
6001ZZ	•	•	•	•	•	•
6201ZZ	•	•	•	•	•	•
6902ZZ	•	•	•	•	•	•
6002ZZ	•	•	•	•	•	•
6202ZZ	•	•	•	•	•	•
6904ZZ	•	•	•	•	•	•
6004ZZ	•	•	•	•	•	•
6204ZZ	•	•	•	•	•	•

Part Number Example

Part Number	Part Number
S-SBACA6900ZZ	S-SBACA6900ZZ

Application Example  
See Application Example on P.969.  
Low Dust Raise Greased Bearings on P.1034.

Part Number Alterations

Part Number	(NA)
S-SBACA6900ZZ	NA

Alteration	Bearings, Retaining Rings Not Assembled
Code	NA
Spec.	Bearing and retaining ring are shipped unassembled to the housing.