

# Miniature Linear Guides (Extra Long Blocks)

Light Preload / Slight Clearance

Miniature Linear Guides (Extra Long Blocks) – Light Preload, Slight Clearance

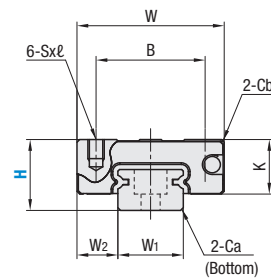


Material Hardness	Type		MX (Lubrication Unit)	L Dimension
	Light Preload	Slight Clearance		
Stainless Steel 56 HRC min.	SSECB	SECBZ	Blank: None	Selectable
	SECBL	SECBLZ	-MX: Provided	Configurable

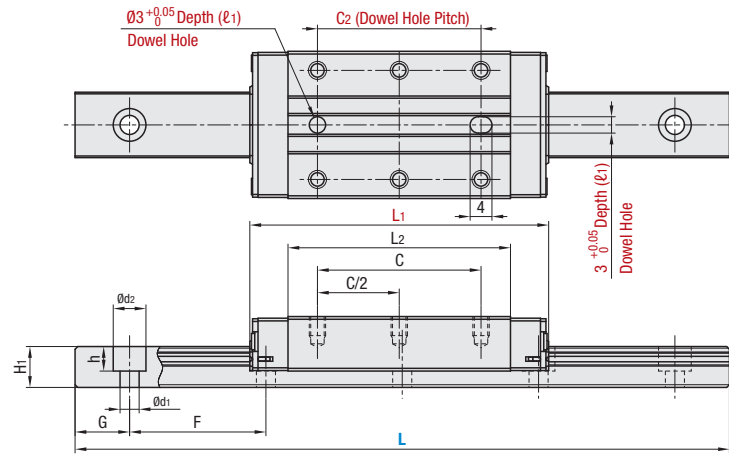
Heat Resistant Temperature: -20–80°C

⚠ For L Configurable, G dimensions differ from those shown in the table below. For details, P.608.

**Features:** MISUMI original specifications with dowel holes. Higher load ratings and allowable moments than Long Block Type.



With Dowel Holes



### Precautions for Use

- ⚠ Blocks are equipped with retainers (wire) to prevent balls from falling out. Refer to P.602.
- ⚠ Radial clearances and accuracies are not guaranteed if the blocks and rails in the Light Preload Type are interchanged from the original set combinations.
- ⚠ Straight grooves are provided on datum planes. Be sure to match the datum lines when using.
- ⚠ Rails cannot be connected end to end.
- ⚠ Running parallelism is the value measured after the rail is mounted.

### Accessories

– H8 comes with cap screws (M2 x 6).

### Others

– Filled with Lithium soap based grease (Multemp Grease PS2 by Kyodo Yushi Co., Ltd.).  
– For operating life calculations, please refer to P.604, or by using our free software at, [http://www.misumiusa.com/lg-bs\\_software/](http://www.misumiusa.com/lg-bs_software/)

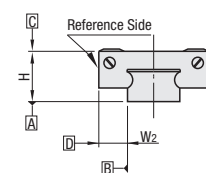
Part Number			L	Block Dimensions								Dowel Hole Dimensions		Guide Rail Dimensions							
Type	MX	H		W	L <sub>1</sub>	B	C	S x ℓ	L <sub>2</sub>	K	Cb	N	C <sub>2</sub>	(ℓ <sub>1</sub> )	W <sub>1</sub>	W <sub>2</sub>	H <sub>1</sub>	Ca	Counterbored Holes d <sub>1</sub> x d <sub>2</sub> x h	F	G
SSECB SECBL SSECBZ SECBLZ	Blank: None -MX: Provided	8	40–130	17	37.5	12	20	M2 x 2.5	27.5	6.5	0.3	8.5	20	2	7	5	4.7	0.3	2.4 x 4.2 x 2.3	15	5
		10	55–275	20	49.6	15	26	M3 x 3	38.6	7.8	0.3	10	26	2.5	9	5.5	5.5	0.3	3.5 x 6 x 3.5	20	7.5
		13	70–470	27	54.8	20	30	M3 x 3.5	40.8	10	0.5	13.5	30	3	12	7.5	7.5	0.5	3.5 x 6 x 4.5	25	10
		16	110–670	32	70.3	25	40	M3 x 4	55.3	12	0.5	16	40	4	15	8.5	9.5	0.5	3.5 x 6 x 4.5	40	15

kgf=Nx0.101972

H	Basic Load Rating		Allowable Static Moment			Mass	
	C (Dynamic) kN	Co (Static) kN	M <sub>a</sub> N·m	M <sub>b</sub> N·m	M <sub>c</sub> N·m	Blocks kg	Guide Rails kg/m
8	1.5	3.3	10.1	10.1	12.4	0.02	0.19
10	2.5	5.0	18.8	18.8	23.7	0.04	0.31
13	3.6	7.6	34.0	34.0	47.3	0.07	0.61
16	6.9	13.5	80.7	80.7	104.3	0.12	1.02



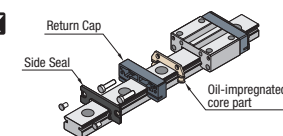
### Preload & Accuracy Standards



Specifications	Light Preload High Grade	Slight Clearance Standard Grade
Radial Clearance	-3–0	0–15
Height H Tolerance	±20	±20
Height H Pair Variation	15	40
Width W <sub>2</sub> Tolerance	±25	±25
Width W <sub>2</sub> Pair Variation	20	40
Running Parallelism of surf. C against surf. A	Refer to P.602	
Running Parallelism of surf. D against surf. B		

⚠ Slight Clearance Type has clearance (Gap) between rails and blocks. If precision / rigidity is required, select Light Preload Type.

### Lubrication Unit MX



# Miniature Linear Guides (Extra Long Blocks)

Light Preload / Slight Clearance, *continued*

Part Number Example

Part Number	-	L	
SSECB10	-	275	
SSECB10L	-	75	L Type Greased
SSECB10G	-	75	G Type Greased

Alternative grease types available.

⚠ Blocks and rails are not sold as separate items. This Type has guaranteed radial clearances and accuracies as sets of blocks and rails.

Part Number Alterations

Part Number	-	L	-	(MC / RLC / LLC)
SSECB16	-	430	-	MC - RLC

Alterations	Code	Spec.												
Tapped Holes 	MC	Changes rail mounting holes from counterbored holes to tapped holes. <table border="1"> <tr><th>H</th><th>MC</th></tr> <tr><td>8</td><td>M3</td></tr> <tr><td>10</td><td>M4</td></tr> <tr><td>13</td><td>M4</td></tr> <tr><td>16</td><td>M5</td></tr> </table>	H	MC	8	M3	10	M4	13	M4	16	M5		
H	MC													
8	M3													
10	M4													
13	M4													
16	M5													
Rail Ends Cut 	Left End Cut LLC Right End Cut RLC	Cuts rail ends. Ordering Code: LLC <table border="1"> <tr><th>H</th><th>L Cut</th><th>N</th></tr> <tr><td>10</td><td>2.5</td><td></td></tr> <tr><td>13</td><td>5</td><td>5</td></tr> <tr><td>16</td><td>10</td><td></td></tr> </table> <p>⚠ Applicable to Selectable Type only. ⚠ Overall length will be shorter by cutting. ⚠ Not applicable to H8.</p>	H	L Cut	N	10	2.5		13	5	5	16	10	
H	L Cut	N												
10	2.5													
13	5	5												
16	10													

### Options for Linear Guide

Positioning Retaining Parts	Block / Rail Fixing Parts
	Rail Push Plates 
Rail Height Adjusting Blocks 	Linear Lock 
Rail Height Adjusting Blocks 	Linear Guide Lock Units 
Stopper Bolts 	