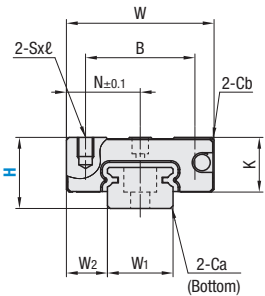


# Miniature Linear Guides (Short Blocks with Dowel Holes)

Light Preload

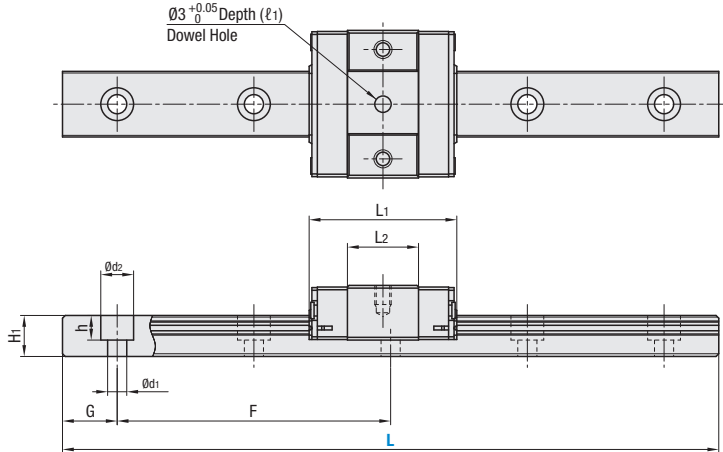


**Features:** MISUMI original specifications **with dowel holes**. Requires less time for assembly and has better repeatability.



Material Hardness	Type	MX (Lubrication Unit)	L Dimension	Number of Blocks
	High Grade			
Stainless Steel 56 HRC min.	SSEBSN	Blank: None -MX: Provided	Selectable	1
	SSE2BSN			2
	SSEBSNL		Configurable	1
	SSE2BSNL			2

Heat Resistant Temperature: -20–80°C  
ⓘ For L Configurable, G dimensions differ from those shown in the table below. For details, **P.608**.



## Precautions for Use

- ⓘ Blocks are equipped with retainers (wire) to prevent balls from falling out. For proper block handling, refer to **P.602**.
- ⓘ Radial clearances and accuracies are not guaranteed if the blocks and rails are interchanged from the original set combinations.
- ⓘ Straight grooves are provided on datum planes. Be sure to match the datum lines when using.
- ⓘ Rails cannot be connected end to end.
- ⓘ The accuracy of Linear Guides is guaranteed after mounting the rail (after fastening screws on the rail and pushing it onto the datum plane). Minor bending of the rail will be adjusted after being mounted and will not affect the performance.

## Accessories

- H8 comes with cap screws (M2x6).

## Others

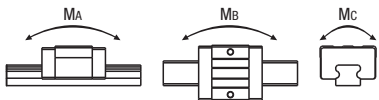
- Filled with Lithium soap based grease (Multemp Grease PS2 by Kyodo Yushi Co., Ltd. ).
- For operating life calculations, please refer to **P.604**, or by using our free software at, [http://www.misumiusa.com/lg-bs\\_software/](http://www.misumiusa.com/lg-bs_software/)

Part Number			L	Block Dimensions						Dowel Hole Dimensions		Guide Rail Dimensions							
Type	MX	H		W	L <sub>1</sub>	B	S x ℓ	L <sub>2</sub>	K	Cb	N	(ℓ <sub>1</sub> )	W <sub>1</sub>	W <sub>2</sub>	H <sub>1</sub>	Ca	Counterbored Holes	F	G
																	d, x d <sub>2</sub> x h		
SSEBSN SSE2BSN SSEBSNL SSE2BSNL	—	8	40–130 (55)	17	19.6	12	M2 x 2.5	9.6	6.5	0.3	8.5	2	7	5	4.7	0.3	2.4 x 4.2 x 2.3	15	5
	Blank: None -MX: Provided	10	35–275 (75)	20	22.9	15	M3 x 3	11.9	7.8	0.3	10	2.5	9	5.5	5.5	0.3	3.5 x 6 x 3.5	20	7.5
		13	5–470 (95)	27	27	20	M3 x 3.5	13	10	0.5	13.5	3	12	7.5	7.5	0.5	3.5 x 6 x 4.5	25	10
		16	70–670 (110)	32	32.7	25	M3 x 4	17.7	12	0.5	16	4	15	8.5	9.5	0.5	3.5 x 6 x 4.5	40	15

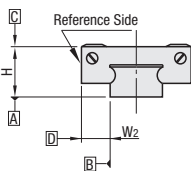
ⓘ L Dimension: Dimensions in ( ) are for the minimum rail length of the 2-Block Type

kgf=Nx0.101972

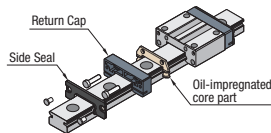
H	Basic Load Rating		Allowable Static Moment			Mass	
	C (Dynamic) kN	Co (Static) kN	M <sub>A</sub> N · m	M <sub>B</sub> N · m	M <sub>C</sub> N · m	Blocks kg	Guide Rails kg/m
8	0.79	1.27	1.9	1.6	4.6	0.008	0.19
10	1.16	1.68	3.1	2.6	7.9	0.015	0.31
13	1.63	2.38	5.2	4.4	14.8	0.025	0.61
16	3.08	4.23	12.3	10.3	32.6	0.05	1.02



## Preload & Accuracy Standards



## Lubrication Unit MX



# Miniature Linear Guides (Short Blocks with Dowel Holes)

Light Preload, *continued*



Part Number Example

Part Number	-	L
SSE2BSN10	-	275
● SSE2BSN10L	-	175
● SSE2BSN10G	-	175

L Type Greased  
G Type Greased

Alternative grease types available.



Part Number Alterations

Part Number	-	L	-	(MC / RLC / LLC)
SSE2BSN16	-	430	-	MC

Alterations	Code	Spec.										
Tapped Holes 	MC	Changes the rail mounting hole from counterbored holes to tapped holes. ⓧ Express Service is not available.										
Rail Ends Cut LLC 	Left End Cut LLC	Cuts rail ends. Ordering Code: LLC <table><tr><th>H</th><th>L Cut</th><th>N</th></tr><tr><td>10</td><td>2.5</td><td rowspan="3">5</td></tr><tr><td>13</td><td>5</td></tr><tr><td>16</td><td>10</td></tr></table>	H	L Cut	N	10	2.5	5	13	5	16	10
H	L Cut	N										
10	2.5	5										
13	5											
16	10											
Rail is cut with the product ID facing out (datum on other side). 	Right End Cut RLC	ⓘ Applicable to Selectable Type only. ⓘ Overall length will be shorter by cutting. ⓧ Not applicable to H8. ⓧ Not applicable to H10, H35 and H13, L45.										
3-Block Specifications	B3	Adds 2-blocks to the 1-block product. ⓘ There are restrictions for the L dimension length. See "Selectable Shortest Rail Length" for details. Selection Example: SSEBSN10-135-B3										
4-Block Specifications	B4	Adds 3-blocks to the 1-block product. ⓘ There are restrictions for the L dimension length. See "Selectable Shortest Rail Length" for details. Selection Example: SSEBSN16-670-B4										

## Selectable Shortest Rail Length for B3/B4

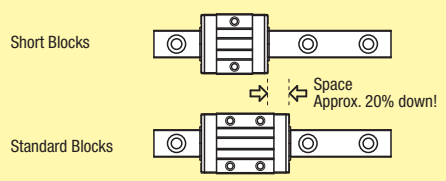
H	B3 (3-block)	B4 (4-block)
8	85	100
10	95	135
13	120	145
16	150	190

## Options for Linear Guide

Positioning Retaining Parts	Block / Rail Fixing Parts
	Rail Push Plates 
Rail Height Adjusting Blocks 	Linear Lock 
Rail Height Adjusting Blocks 	Linear Guide Lock Units 
Stopper Bolts 	



Application Example



## Installation Example

