

Floating Joints

Mount Flange, Cylinder Connector (Tapped) Sets Standard Type / Space-Saving Type

For mount flange and cylinder connector (tapped) only, refer to P.3625 and P.3627 respectively.

Floating Joints

Shape	Type								Material	Hardness		Surface Treatment
	Set			Connector only		Flange only				Mount Flange	Cylinder Connector	
	Standard	Separate	Compact	L Fixed	L Configurable	Standard	Separate	Compact				
Standard	FJA	FJB	FJC	FJCN	FJCNL	FJA-H	FJB-H	FJC-H	1045 Carbon Steel or Equivalent	40HRC~	Section from 45 HRC Induction Hardened	Black Oxide
	FJAS	FJBS	FJCS	FJCMS	FJCNLS	FJAS-H	FJBS-H	FJCS-H	440C Stainless Steel or Equivalent	45HRC~		Black Oxide
Space Saving	FJUA	FJUB	FJUC	FJUN	—	FJUA-H	FJUB-H	FJUC-H	1045 Carbon Steel or Equivalent	40HRC~	—	Black Oxide
	FJUAS	—	FJUCS	FJUNS	—	FJUAS-H	FJUBS-H	FJUCS-H	440C Stainless Steel or Equivalent	45HRC~	—	—

Mount Flange
Standard Type, Separate Type, Compact Type (Standard Type, Space-Saving Type)

Cylinder Connector

* 1 2.0 only for M30-M36

Standard Type

Part Number	Type	Mount Flanges											Cylinder Connector										
		M	A	D ₁	D ₂	t	F	P.C.D.	d	d ₁	H ₁	E	G	MxPitch	ℓ	L	D	H	T	W	L ₁	SR	
Standard FJA FJAS	3	42	18	13	5	10	30	4.5	8	5	24	30	3x0.5	6	15	12	17	5	10	6	40		
	4	42	18	13	5	10	30	4.5	8	5	24	30	4x0.7	8	15	12	17	5	10	6	40		
	5	48	20	15	6	12	34	6	9.5	5.5	28	34	5x0.8	10	20	14	19	6	12	8	50		
	6	48	20	15	6	12	34	6	9.5	5.5	28	34	6x1.0	12	20	14	19	6	12	8	50		
Separate FJB FJBS	8	51	24	17	8	16	37	7	11	6	30	37	8x1.25	14	25	16	23	8	14	10	60		
	10	54	28	21	8	16	40	7	11	6	32	40	10x1.25	15	25	20	27	8	17	10	60		
	12	70	36	27	10	20	52	10	14	8	42	52	12x1.25	18	35	25	34	10	22	12	100		
	14	70	36	27	10	20	52	10	14	8	42	52	14x1.5	21	35	25	34	10	22	12	100		
Compact FJC FJCS	16	90	46	35	12	24	68	12	17.5	10	54	68	16x1.5	24	45	32	43	12	27	15	200		
	18	90	46	35	12	24	68	12	17.5	10	54	68	18x1.5	27	45	32	43	12	27	15	200		
	20	106	56	44	15	30	80	14	20	12	66	80	20x1.5	30	55	40	52	15	32	18	200		
	22	106	56	44	15	30	80	14	20	12	66	80	22x1.5	33	55	40	52	15	32	18	200		
* Stainless Steel (M3-30)	24	116	66	53	16	32	86	16	22	12	78	86	24x1.5	36	60	49	62	16	41	23	250		
	26	116	66	53	16	32	86	16	22	12	78	86	26x1.5	39	60	49	62	16	41	23	250		
	30	134	74	59	18	40	104	18	26	18	80	104	30x1.5	43	65	54	69	18	46	24	250		
	36	134	74	59	18	40	104	18	26	18	80	104	36x1.5	45	65	54	69	18	48	24	250		

① 440C Stainless Steel or Equivalent Hardened Type may be discolored due to hardening.

Space-Saving

Part Number	Type	Mount Flanges											Cylinder Connector										
		M	A	D ₁	D ₂	t	F	P.C.D.	d	d ₁	H ₁	E	MxPitch	ℓ	L	D	H	T	W	L ₁	SR		
Standard FJUA	5	34	17	13	5	11	24	4.5	8	5	22	24	5x0.8	10	17	12	16	5	10	6	50		
	6	34	17	13	5	11	24	4.5	8	5	22	24	6x1.0	12	20	16	22	5	13	8	60		
	8	40	23	17	5	11	30	6	9.5	5.5	25	30	8x1.25	14	23	16	22	5	13	8	60		
	10	40	23	17	5	11	30	6	9.5	5.5	25	30	10x1.25	15	25	16	22	5	13	8	60		
Separate FJUB	12	52	32	24	5.5	12	40	6	9.5	5.5	34	40	12x1.25	18	29	22	30	5.5	19	10	100		
	14	52	32	24	5.5	12	40	6	9.5	5.5	34	40	14x1.5	21	33	22	30	5.5	19	10	100		
	16	62	39	31	8	16	48	7	11	6	41	48	16x1.5	24	37	28	36	8	21	12	100		
	18	62	39	31	8	16	48	7	11	6	41	48	18x1.5	27	41	28	36	8	21	12	100		
Compact FJUC FJUCS	20	74	46	36	10	20	58	10	14	8	48	58	20x1.5	30	46	32	42	10	26	15	200		
	22	74	46	36	10	20	58	10	14	8	48	58	22x1.5	33	50	32	42	10	26	15	200		
	24	80	52	42	12	24	64	12	16	8	54	64	24x1.5	36	55	38	48	12	32	16	200		
	26	80	52	42	12	24	64	12	16	8	54	64	26x1.5	39	60	38	48	12	32	16	200		
30	90	62	52	16	32	74	16	22	12	64	74	30x1.5	43	65	48	58	16	36	18	250			

① 440C Stainless Steel or Equivalent Hardened Type may be discolored due to hardening.

② Space Saving Type is a special floating joint for air cylinders.

③ For Feature of Floating Joint (for Space Saving Type), refer to Backing Plates (P.3623).

Floating Joints

Mount Flange, Cylinder Connector (Tapped) Sets Standard Type / Space-Saving Type, *continued*

M	Available Types									
	Standard Type						Space-Saving			
	FJA	FJB	FJC	FJAS	FJBS	FJCS	FJUA	FJUB	FJUC	FJUCS
3	•	•	•	•	•	•	—	—	—	—
4	•	•	•	•	•	•	—	—	—	—
5	•	•	•	•	•	•	•	•	•	•
6	•	•	•	•	•	•	•	•	•	•
8	•	•	•	•	•	•	•	•	•	•
10	•	•	•	•	•	•	•	•	•	•
12	•	•	•	•	•	•	•	•	•	•
14	•	•	•	•	•	•	•	•	•	•
16	•	•	•	•	•	•	•	•	•	•
18	•	•	•	•	•	•	•	•	•	•
20	•	•	•	•	•	•	•	•	•	•
22	•	•	•	•	•	•	•	•	•	•
24	•	•	•	•	•	•	•	•	•	•
26	•	•	•	•	•	•	•	•	•	•
30	•	•	•	•	•	•	•	•	•	•
36	•	•	•	•	•	•	•	•	•	•

Part Number Example

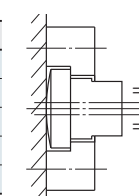
Connector Only L Configurable
Part Number - L
FJCNL10 - 50

Other Than Above

Part Number
FJA10
FJUB-H12

Allowable Misalignment (mm)

M	U
3-10	0.5
12 or 14	1
16 or 18	1.5
20-26	2
30* or 36	2.5 (2)



*Value in () is for the Space-Saving Type.

Part Number Alterations

Part Number - (AWC)
FJMA10 - AWC

Flange Cut

AWC

M	K
3, 4	32
5, 6	36
8	40
10	42
12, 14	54
16, 18	68
20, 22	80
24, 26	86
30	104

⊗ Standard Type only (Not applicable to FJA36, FJMA22)
⊗ Not applicable to Space Saving Type.

Cylinder Connector (See the Set Size Table for detailed sizes.)

Type	Part Number		L Configurable (1mm Increment)	Available Types			
	M	Fixed		FJCN	FJCMS	FJCNL	FJCNLS
L Fixed FJCN FJCMS	3	15	—	•	•	—	—
	4	15		•	•	—	—
	5	20		•	•	—	—
	6	20		•	•	—	—
	8	25		•	•	•	•
	10	25		•	•	•	•
L Configurable FJCNL FJCNLS	12	35	30-60	•	•	•	•
	14	35		•	•	•	•
	16	45	40-80	•	•	•	•
	18	45		•	•	•	•
	20	55	50-100	•	•	•	•
	22	55		•	•	•	•
	24	60	60-100	•	•	•	—
	26	60		•	•	•	—
	30	65		•	•	•	—
	36	65		•	•	•	—