

Extension Fittings

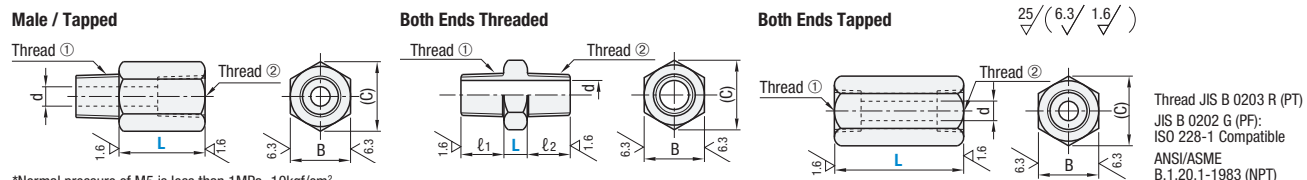
L Dimension Standard / Configurable

Extension Fittings – L Dimension Standard / Configurable



RoHS10

L Fixed			L Configurable			Material	Surface Treatment	Max. Operating Pressure
Male / Tapped	Both Ends Threaded	Both Ends Tapped	Male / Tapped	Both Ends Threaded	Both Ends Tapped			
APMTF	APMMF	APMFF	APMTFL	APMMFL	APMFFL	1018 Carbon Steel or Equivalent	Electroless Nickel Plating	20.6 MPa
APMTS	APMMS	APMFS	APMTSL	APMMSL	APMFSL	303 Stainless Steel	—	
APMTY	APMMY	APMFY	APMTYL	APMMYL	APMFYL	Brass	—	



*Normal pressure of M5 is less than 1MPa=10kgf/cm².
*Male Side of M5 Type is provided with a nylon washer.

Male / Tapped

Part Number Type	Threads ① Male thread	No.	T (PT) G (PF) N (NPT)	Threads ② Female thread	No.	T (PT) G (PF) N (NPT)	L		B	(C)	d
							Fixed	1 mm Increment			
L Fixed Type APMTF APMTS APMTY	T (PT) G (PF) N (NPT)	1	1/8	—	M5	—	15	16-30	13	14.4	4.2
							15	16-30	13	14.4	4.5
							20	21-35	17	19.6	4.5
							20	21-35	17	19.6	4.5
L Configurable APMTFL APMTSL APMTYL	T (PT) G (PF) N (NPT)	2	1/4	—	M5	—	15	16-30	17	19.6	4.2
							15	16-30	17	19.6	4.5
							20	21-35	17	19.6	6.5
							20	21-35	19	21.9	6.5
							20	21-35	19	21.9	9
							20	21-35	19	21.9	9
							25	26-40	24	27.7	9
							20	21-35	24	27.7	10
25	26-40	24	27.7	10							

Both Ends Threaded

Part Number Type	Threads ① Male thread	No.	T (PT) G (PF) N (NPT)	Threads ② Male thread	No.	T (PT) G (PF) N (NPT)	L		B	(C)	ℓ ₁	ℓ ₂	d
							Fixed	1 mm Increment					
L Fixed Type APMMF APMMS APMMY	T (PT) G (PF) N (NPT)	1	1/8	—	M5	—	13	14.4	10	7.5	3		
							13	14.4	10	10	4.5		
							17	19.6	10	12	4.5		
							17	19.6	12	7.5	3		
L Configurable APMMFL APMMSL APMMYL	T (PT) G (PF) N (NPT)	2	1/4	—	M5	—	17	19.6	12	10	4.5		
							17	19.6	12	12	6.5		
							19	21.9	12	13	6.5		
							19	21.9	13	12	6.5		
							19	21.9	13	13	9		
							24	27.7	13	17	9		
							24	27.7	17	13	9		
							24	27.7	17	17	10		

Both Ends Tapped

Part Number Type	Threads ① Female thread	No.	T (PT) G (PF) N (NPT)	Threads ② Female thread	No.	T (PT) G (PF) N (NPT)	L		B	(C)	d
							Fixed	1 mm Increment			
L Fixed Type APMFF APMFS APMFY	T (PT) G (PF) N (NPT)	1	1/8	—	M5	—	20	21-35	13	14.4	4.2
							20	21-35	13	14.4	8.2
							20	21-35	17	19.6	8.2
							25	26-40	17	19.6	4.2
L Configurable APMFFL APMFSL APMFYL	T (PT) G (PF) N (NPT)	2	1/4	—	M5	—	25	26-40	17	19.6	8.2
							25	26-40	17	19.6	10.9
							25	26-40	19	21.9	10.9
							25	26-40	19	21.9	10.9
							25	26-40	19	21.9	10.9
							30	31-45	19	21.9	14.2
							35	36-50	24	27.7	14.2
							35	36-50	24	27.7	14.2
35	36-50	24	27.7	17.8							

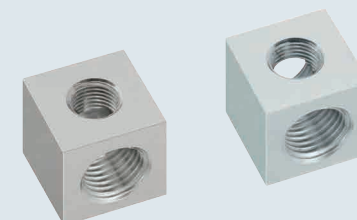
Part Number Example: APMTF - T2 - G3 - L20

Part Number Example: APMMSL - G1 - M5 - L20

Conversion Pipe Fittings

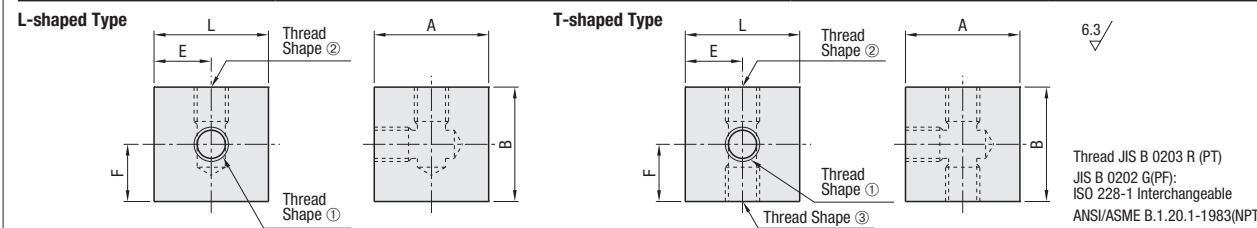
L-Shaped / T-Shaped

Conversion Pipe Fittings – L-Shaped / T-Shaped



RoHS10

Type		Material	Surface Treatment	Max. Operating Pressure
L-Shaped	T-Shaped			
APBLM	APBTM	1018 Carbon Steel or Equivalent	Electroless Nickel Plating	20.6 MPa
APBLS	APBTS	304 Stainless Steel	—	
APBLA	APBTA	5052 Aluminum Alloy	—	1 MPa



L-Shaped Type

Part Number Type	Thread Shape ①	No.	T (PT) G (PF) N (NPT)	Thread Shape ②	No.	T (PT) G (PF) N (NPT)	L	A	B	E	F									
												APBLM 1018 Carbon Steel or Equivalent	T (PT) G (PF) N (NPT)	1	1/8	—	M5	—	25	25 (30)
APBLS 304 Stainless Steel	1	1/8	25	25 (30)	25 (30)	12.5 (15)	12.5 (15)													
								2	1/4	30	30	30							15	15
								APBLA 5052 Aluminum Alloy	2	1/4	30	30	30	15	15					
2	1/4	35	35 (40)	35 (40)	17.5 (20)	17.5 (20)														
							3									3/8	40	40	40	20
4	1/2	50	50	50	25	25														
							3	3/8	40	40	40	20	20							
4	1/2	50	50	50	25	25														
														3	3/8	50	50	50	25	25
4	1/2	50	50	50	25	25														

① Dimensions in () are applicable to 304 Stainless Steel.

T-Shaped Type

Part Number Type	Thread Shape ①	No.	T (PT) G (PF) N (NPT)	Thread Shape ②	No.	T (PT) G (PF) N (NPT)	Thread Shape ③	No.	T (PT) G (PF) N (NPT)	L	A	B	E	F									
															APBTM 1018 Carbon Steel or Equivalent	T (PT) G (PF) N (NPT)	1	1/8	—	M5	—	—	M5
APBTS 304 Stainless Steel	1	1/8	25	25 (30)	25 (30)	12.5 (15)	12.5 (15)																
								2	1/4	30	30	30	15	15									
															3								
								APBTA 5052 Aluminum Alloy	2	1/4	30	30	30	15		15							
2	1/4	35	35 (40)	35 (40)	17.5 (20)	17.5 (20)																	
							3								3/8		40	40	40	20	20		
4	1/2	50	50	50	25	25																	
							3	3/8	40	40	40	20	20										
4	1/4	40	40	40	20	20																	
														2	1/4	40	40	40	20	20			
3	3/8	40	40	40	20	20																	
							4	1/2	50	50	50	25	25										
2	1/4	50	50	50	25	25																	
														3	3/8	50	50	50	25	25			
4	1/2	50	50	50	25	25																	

① Dimensions in () are applicable to 304 Stainless Steel.

Part Number Example: APBLM - T1 - T2 - M5

Part Number Example: APBTA - T1 - M5 - M5