

# Leveling Mounts

## Vibration Damping Mounts

**Leveling Mounts – Vibration Damping Mount**

RoHS 10

**FJFNV**

Details of Rubber Part

**FJFNCV**

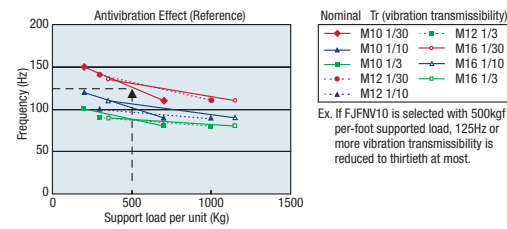
Non-Migration Rubber Type

Type	(1) Main Body		(2) Rubber Part		Hardness
	Material	Surface Treatment	Material		
FJFNV	Cast Iron Class No.35 (Screw, Nut 1018 Carbon Steel)	Trivalent Chromate	Chloroprene Rubber		Shore A70 (M10/12)
FJFNCV			Non-migration Chloroprene Rubber (gray)		Shore A90 (M16)

Part Number	M-A	L	ℓ <sub>1</sub>	ℓ <sub>2</sub>	E	B	Vertical Load Range (kN)	Mass (g)
FJFNV FJFNCV	10-75	100	7	8	18	17	2.0-7.0	322
	10-100	125						333
	12-75	101						342
	12-100	126	8	10		360		
	12-125	151				379		
	12-150	176				395		
	16-75	103	10	13		438		
	16-100	128				449		
	16-130	158				508		
	16-150	178	536					
16-180	208	574						

**Part Number Example** **Part Number**  
FJFNV16-75

**Antivibration Effect**  
This product's antivibration effects (vibration transmissibility) heavily depends on applied loads and frequency of supported objects (natural frequency). The graph on the right shows anticipated antivibration effects of this product calculated from frequencies of supported objects.



- How to Select**
- Calculations of Applied Load per Unit  
Ex) When an object of 2,000 kg is supported by 4 points, 2,000/4=500(kgf)
  - Natural Frequency of the Object is investigated. Frequency = Number of Vibrations per Second  
Ex) When motor speed is 7,200 rpm, 7,200(rpm)/60(s)=120(Hz)
- With data obtained (1) and (2) plotted on the graph, applicable screw diameter (M) and vibration transmissibility under the condition are found.

**Adjustment Pads – Antivibration Attachment**

RoHS 10

**KMBU**  
**KMBS**

M (Leveler Mounting on Tip)

Part Number	Material	Surface Treatment	Hardness
KMBU	Plate	Low Carbon Steel	—
	Main Body	1045 Carbon Steel	—
	Damper	Chloroprene Rubber	Shore 60
KMBS	Plate	304 Stainless Steel	—
	Main Body	—	—
	Damper	Chloroprene Rubber	Shore 60

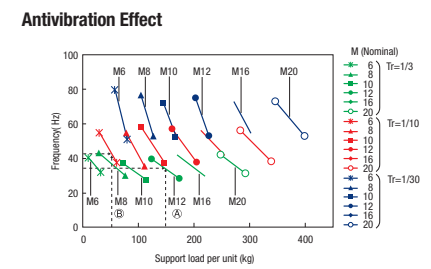
Part Number	Type	M	Damper Hardness	Main Body				Fixing Plate				Vertical Load (kN)	Mass (g)				
				L	D	d <sub>1</sub>	S	t <sub>1</sub>	B	ℓ <sub>1</sub>	A			F	t <sub>2</sub>	d	
KMBU KMBS	N	6	N	42	45	40	28	2.5	10	3.5	80	60	2.3	8.5	1	260	
		8		43	55	50	30	13	5	1.5							340
		10		44	60	55	31	17	6	2							420
		12		44	72	67	32	19	7	2.5							630
		*16		44.5	88	83	33	24	10	3							1000
*20	45	103	98	34	30	12	3.5	1220									

\*M16 and 20 are available for KMBU only.

**Part Number Example** **Part Number** - **Damper Hardness**  
KMBU10 - N

**Features**  
- Suitable for vibration countermeasures for vibratory equipment and machinery.  
- Can be used as general leveling mounts up to 5° inclination.  
- Damper will not stain floor since not in contact with the floor.

**How to Select**  
Antivibration effects of vibration material (vibration transmissibility) heavily depend on applied loads and frequency of supported objects (natural frequency). The graph on the right shows anticipated antivibration effects of products calculated from frequencies of supported objects.



- Calculations of Applied Load per Attachment  
Ex) When an object of 600 kg is supported by four attachments 600/4=150 (kgf)
- Natural Frequency of the Object is evaluated.  
Frequency=Number of Vibrations per Second  
Ex) When the motor speed is 1,800 rpm, 1,800 (rpm)/60 (s)=30 (Hz)

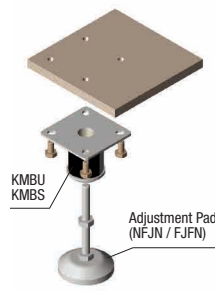
Ex. (A) If KMBU(S)12 is selected with supported load to be 150 kg per foot, transmissibility for vibrations above 30 Hz is reduced to 1/3 or less.  
Ex. (B) If KMBU(S)6 is selected with supported load to be 50kg per foot, transmissibility for vibrations above 40 Hz is reduced to 1/10 or less.

With data obtained (1) and (2) plotted on the graph, appropriate type of the attachment and vibration transmissibility under above condition are found.

Ⓢ All values are based only on calculations and are not guaranteed.

**Application Example**

Equipment vibrations are suppressed by the damper effect.



# Leveling Mounts

## Mounting Plates / Mounting Nuts / Protection Caps

**Leveling Mounts – Economy Mounting Plate**

RoHS 10

**FJKMT**

Material: 1018 Carbon Steel or Equivalent  
Surface Treatment: Bright Chromate Plating

**Leveling Mounts – Thick Mounting Plate**

RoHS 10

**Steel**  
AJPNF  
AJKNF

**Stainless Steel**  
AJPNFS  
AJKNFS

Type	Material	Surface Treatment
AJPNF / AJKNF	1018 Carbon Steel or Equivalent	Trivalent Chromate
AJPNFS / AJKNFS	304 Stainless Steel	—

**Leveling Mounts – Mounting Plate**

RoHS 10

**Steel**  
FJKPF  
FJKPN  
FJKPG

**Stainless Steel**  
FJKPFS  
FJKPNS  
FJKPGS

Type	Material	Surface Treatment
FJKP_	1018 Carbon Steel or Equivalent	Trivalent Chromate
FJKP_S	304 Stainless Steel	—

**Leveling Mounts – Mounting Nut**

RoHS 10

**FJTP**

Material: 1018 Carbon Steel or Equivalent  
Surface Treatment: Trivalent Chromate

**Leveling Mounts – Protection Caps**

RoHS 10

**AJCP**

Ⓢ 20 pcs. per package  
Material: EPDM Synthetic Rubber

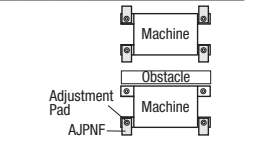
Part Number		A	B	L
FJKMT	Type			
	No.	12	22.5	19.3
		16	25	24.5
	20	28	31.0	95

**Part Number Example** **Part Number**  
FJKMT12

Part Number	Type	No.	t	Plate Thickness	D	A	B	K	C	L	L <sub>1</sub>	Applicable Leveling Mount
AJPNF Steel	AJPNFS Stainless Steel	16	20	4.5	29	37.5	17	50	28.5	115	72	NFJN16, P.3166
				6					30			
AJKNF Steel	AJKNFS Stainless Steel	16	20	4.5	36	45.5	21	60	28.5	125	77.5	NFJN20, P.3166
				6					30			
AJKNF Steel	AJKNFS Stainless Steel	16	20	4.5	29	37.5	17	50	24.5	115	72	FJFN16, P.3169
				6					26			
AJKNF Steel	AJKNFS Stainless Steel	20	20	4.5	36	45.5	21	60	24.5	125	77.5	FJFN20, P.3169
				6					26			

Ⓢ Plate thickness may vary up to -10%.

**Part Number Example** **Part Number** - t  
AJPNF20 - 4.5



**Application Example**

Fixing Plates may not be usable at 4 locations depending on equipment and machine conditions. Thick type prevents disengagement and displacement, and produces the optimal effects with the fewest fixing plates.

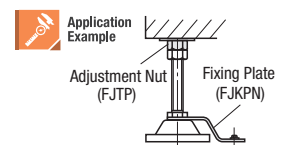
Part Number	Type	No.	t	Thickness	FJKP	FJKP_S	A	B	C	L	L <sub>1</sub>	Applicable Adjustment Pads
FJKPF Steel	FJKPFS Stainless Steel	12	2	3.2	2	2	22.5	19	22	95	65	NFJN12, P.3166
										130	100	
										95	65	
										130	100	
FJKPN Steel	FJKPNS Stainless Steel	12	2	3.2	2	2	22.5	19	20	95	65	FJFN12, P.3169
										130	100	
										95	65	
										130	100	
FJKPG Steel	FJKPGS Stainless Steel	12	2	3.2	2	2	22.5	19	25	95	65	FJGN12, P.3167
										130	100	
										95	65	
										130	100	

Ⓢ For FJKPN and FJKPNS, t=2 when t dimension is not specified.

**Part Number Example** **Part Number** - t  
FJKPN16 - 3.2

Part Number	Type	M (Coarse)	B	C	D	E	F	G	d
FJTP	N	12	40	40	28	28	2	10	6
			60		42	22			
			50		36	36			
			80		56	26			
			20		50	36			
	80	56	26	16					

**Part Number Example** **Part Number** - B  
FJTP16 - 80



**Features**  
Hex nuts do not fall off as they are swaged on.

Part Number	Type	No.	Color	D	L	d <sub>1</sub>	d <sub>2</sub>	ℓ <sub>1</sub>	ℓ <sub>2</sub>	Applicable Screw Size (Coarse)
AJCP	N	8	Black	11	35	5.5	7	10	20	M6 / 8
				16.5		9.5	11.5			M10 / 12
				24.5		15.5	19.5			M16 / 20

**Part Number Example** **Part Number** - Color  
AJCP12 - B

**Tips with Adjustment Pads**  
- Can be used to protect exposed threaded portions.  
- Select according to size of M threads.  
- Easy installation due to its flexibility.